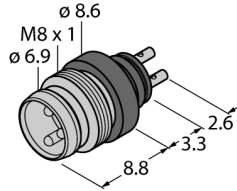
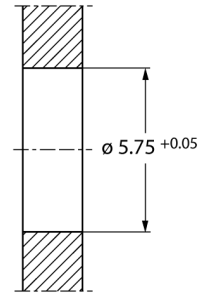
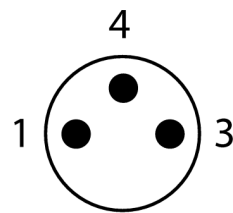


**Round connector M8 x 1 / Ø 8 mm**  
**Ø 8/M8x1 mm built-in connector, screw-/snap-on type**  
**SESP3SL**



- Robust and pre-assembled flange connector
- 3-pin
- Potted, protection class IP67
- GOST-R-approved
- RoHS-compliant
- Solder contact

**Wiring Diagram**



<b>Type designation</b>	SESP3SL
Ident no.	6934783
<b>Connector A side</b>	Built-in male connector, M8  1
Number of pins	3
Contacts	Metal, CuZn, Gold-plated
Contact carriers	Plastic, PA, Black
Flange housing	Plastic, PA, black
Connection mode	Solder contact
Mechanical lifespan	> 100 Mating cycles
Pollution degree	3/2
Protection class	IP67, (plugged)
<b>Rated voltage</b>	60 V
Current	4 A
Insulation resistance	≥ 10 <sup>9</sup> Ω
<b>Ambient temperature</b>	
Stationary	-30...+90°C