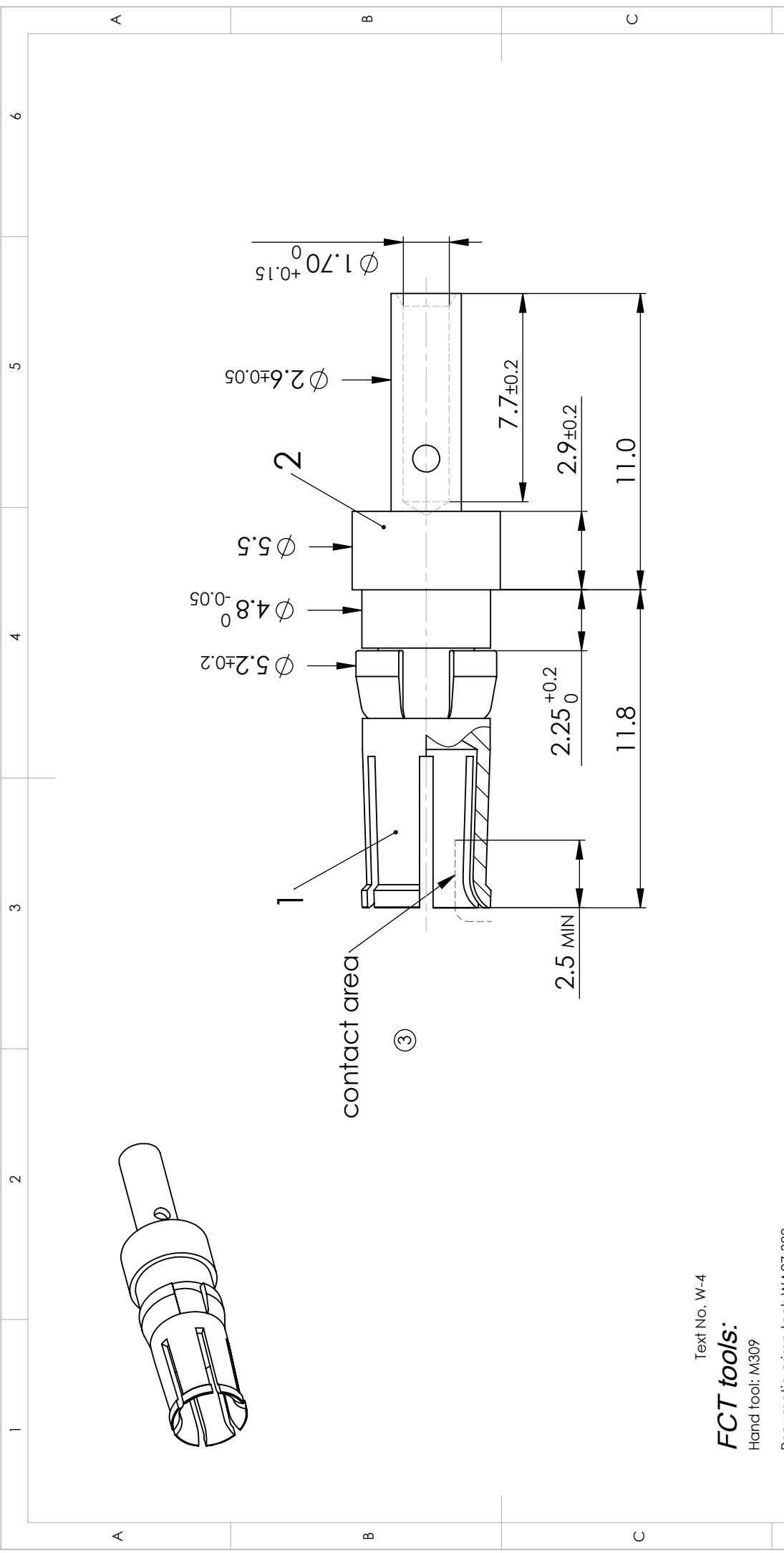


COMMENT:  
 ALL RIGHTS ARE RESERVED BY US FOR THIS DRAWING. WITHOUT OUR PRIOR CONSENT,  
 IT MAY NEITHER BE DUPLICATED NOR MADE AVAILABLE TO A THIRD PARTY.  
 AND IT ALSO MAY NOT BE IMPROPERLY USED BY THE RECEIVER, OR A THIRD PARTY.



Text No. W-4

**FCT tools:**

- Hand tool: M309
- Pneumatic crimp tool: WA27-309
- Die: SP994
- Selector Number:  
 AWG 16 / SEL. 3  
 AWG 18 / SEL. 2  
 AWG 20 / SEL. 2

CURRENT		10 A	HIGH POWER CONTACT		SCALE	DATA SHEET	
FOR	D-Sub				5:1	②	
DIMENSIONS IN MM			NAME / DATE				
			MSteinbrück				
			05-09-2003				
MATERIAL + FINISH SEE EXTRA SHEET			MITeubel				
UNLESS OTHERWISE SPECIFIED DIMENSIONS FOR REFERENCE ONLY			01-08-2006				
REV. 3	15-08-2008	11399	 <b>FCT</b> a mollex company		PART NO.		REV.
INDEX					FMP002S		3
			ORIGINAL: DIN A4-DRAWING AS A FILE		REPLACEMENT FOR:		PAGE: 1/1