

Fehlerkorrektur zu Lumberg RKTS..

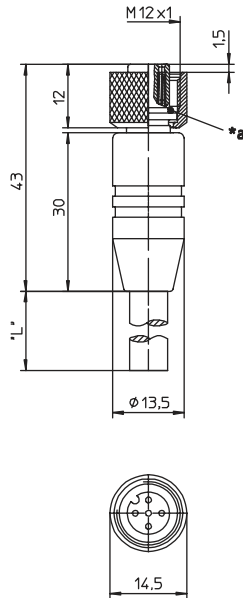
lt. Telefonat mit Fa.Lumberg

Nennstrom bei 40 °C: 4,0 A (4- und 5polig)  
2,0 A (2polig)

### RKTS

Aktor-/Sensor-Anschlussleitung, M12-Kupplung mit Schraubverschluss und angespritztem Kabel, Abschirmung über die Rändelmutter geleitet

Actuator/sensor cordset, single-ended, M12 female connector with threaded joint and molded cable, shielding connected to knurled nut

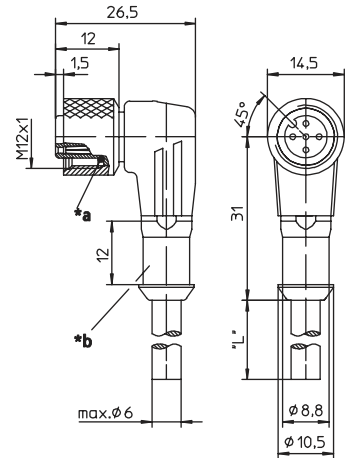


\*a O-Ring  
O-ring

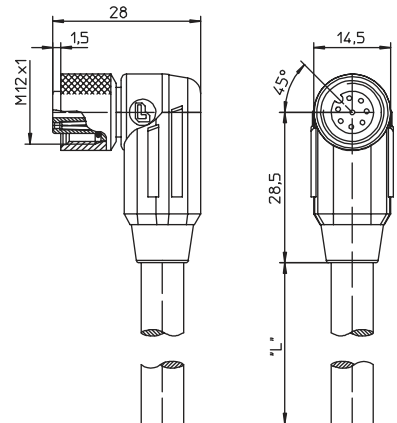
### RKWTH

Aktor-/Sensor-Anschlussleitung, M12-Winkelkupplung mit Schraubverschluss und angespritztem Kabel, Abschirmung über die Rändelmutter geleitet

Actuator/sensor cordset, single-ended, M12 female right angle connector with threaded joint and molded cable, shielding connected to knurled nut



8-polige Ausführung / 8 pole version



\*a O-Ring  
O-ring

\*b Schutzschlauchmontage  
hose mounting

### Pinbelegung Pin assignment

#### 4-polig 4 poles



- 1 = braun / brown
- 2 = weiß / white
- 3 = blau / blue
- 4 = schwarz / black

#### 5-polig 5 poles



- 1 = braun / brown
- 2 = weiß / white
- 3 = blau / blue
- 4 = schwarz / black
- 5 = grau / grey

#### 8-polig 8 poles


















- 1 = weiß / white
- 2 = braun / brown
- 3 = grün / green
- 4 = gelb / yellow
- 5 = grau / grey
- 6 = rosa / pink
- 7 = blau / blue
- 8 = rot / red

## Anschlussleitungen für Aktoren, Sensoren und Verteiler Cordsets, single-ended, for actuators, sensors and distribution boxes

Technische Daten	
Umgebungstemperatur	-25°C / +80°C
<b>Werkstoffe</b>	
Gehäuse / Griffkörper	TPU
Kontaktträger	PBT
Kontakt	CuZn, unternickelt und 0,8 µm vergoldet
Gewindebuchse / Rändelschraube/-mutter / Sechskantschraube/-mutter / Hülse	CuZn, vernickelt
Schirmhülse	CuZn, verzinkt
O-Ring	FKM
<b>Mechanische Daten</b>	
Schutzart	IP 67 Nur im verschraubten Zustand mit den dazugehörigen Gegenstücken.
<b>Elektrische Daten</b>	
Durchgangswiderstand	≤ 5 mΩ
Nennstrom bei 40°C	4 A
Nennspannung	4-polig 240 V 5-polig 60 V 8-polig 30 V
Bemessungsspannung	3- bis 4-polig 250 V 5-polig 63 V 8-polig 36 V
Prüfspannung	3- bis 4-polig 2,0 kV eff. / 60 s 5- bis 8-polig 1,5 kV eff. / 60 s
Isolationswiderstand	> 10 <sup>9</sup> Ω
Verschmutzungsgrad	3

Technical data	
Operating temperature range	-25°C / +80°C
<b>Materials</b>	
Housing / Molded body	TPU
Insert	PBT
Contact	CuZn, pre-nickel and 0.8 microns gold-plated
Receptacle shell / knurled screw/nut / hexagon screw/nut / sleeve	CuZn, nickel-plated
Shield sleeve	CuZn, tin-plated
O-ring	FKM
<b>Mechanical data</b>	
Degree of protection	IP 67 Only in locked position with its proper counterparts.
<b>Electrical data</b>	
Contact resistance	≤ 5 mΩ
Nominal current at 40°C	4 A
Nominal voltage	4 poles 240 V 5 poles 60 V 8 poles 30 V
Rated voltage	3-4 poles 250 V 5 poles 63 V 8 poles 36 V
Test voltage	3-4 poles 2.0 kV eff. / 60 s 5-8 poles 1.5 kV eff. / 60 s
Insulation resistance	> 10 <sup>9</sup> Ω
Pollution degree	3

Bestellbezeichnung Designation		Polzahl Poles	Mantel Outer jacket	
RKTS 4-182/... M	RKWTH 4-182/... M	4	PVC	
RKTS 4-288/... M	RKWTH 4-288/... M		PUR halogenfrei / halogen free	   
RKTS 5-183/... M		5	PVC	
RKTS 5-298/... M	RKWTH 5-298/... M		PUR halogenfrei / halogen free	   
RKTS 8-184/... M		8	PVC	
RKTS 8-299/... M	RKWTH 8-299/... M		PUR halogenfrei / halogen free	   

Standardlängen: 2 M / 5 M / 10 M  
Andere Kabellängen oder Leitungsaufbauten auf Anfrage.

Standard lengths: 2 M / 5 M / 10 M  
Other cable lengths or cable specifications on request.