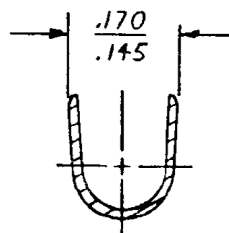
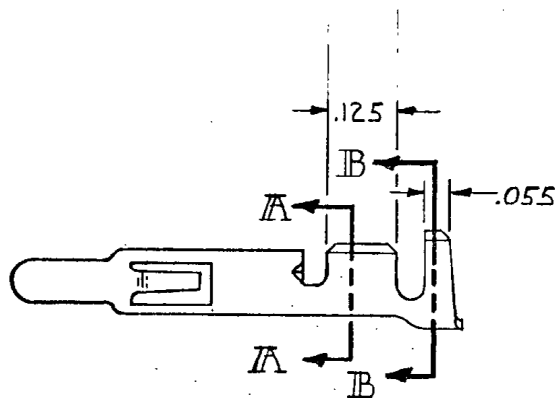
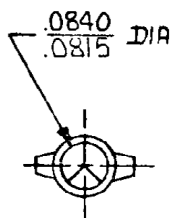
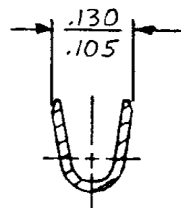
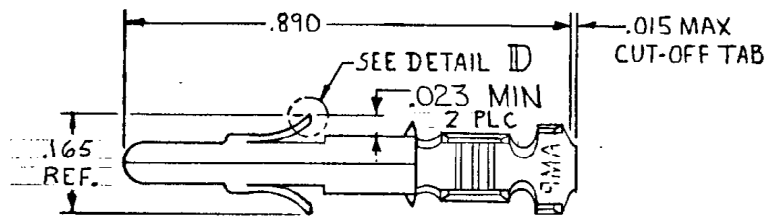
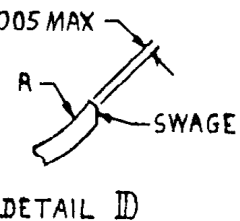


© COPYRIGHT 1975 BY AMP INCORPORATED, HARRISBURG, PA.
 ALL INTERNATIONAL RIGHTS RESERVED. AMP INCORPORATED PRODUCTS
 COVERED BY U. S. AND FOREIGN PATENTS AND/OR PATENTS PENDING.

REVISIONS					DATE	APPROVED
P	F	ZONE	LTR	DESCRIPTION		
✓	✓		G	REVISED PER ECR-12-013323	10AUG12	TM



△ INSULATION RANGE: .060-.130 DIA.

PRE-TIN	.012 BRASS	350669-1
FINISH	MATERIAL	PART NO

UNLESS OTHERWISE SPECIFIED DIMENSIONS ARE IN INCHES. TOLERANCES ON: DECIMALS ±.015 ANGLES ±	CONTRACT NO	AMP AMP INCORPORATED Harrisburg, Pa.		
	DR <i>M. FEHER 5-6-81</i>			
	CHK <i>J.S. Weide 6/9/81</i>	NAME PIN, (LOOSE PIECE)		
	APPD <i>R. Volobuh 6-10-81</i>	UNIVERSAL MATE-N-LOK		
WIRE RANGE 20-14 AWG	DSGN APPD	SIZE B	CODE IDENT NO 00779	DRAWING NO 350669
INSULATION RANGE △	OTHER APPD	SCALE 4-1		SHEET #