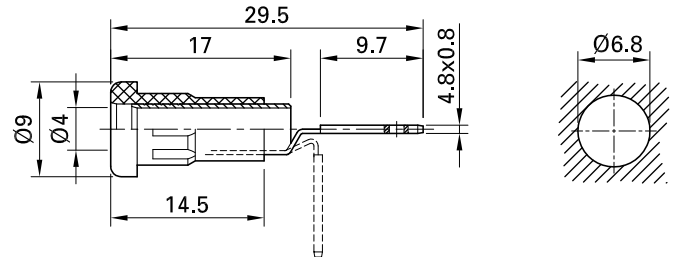
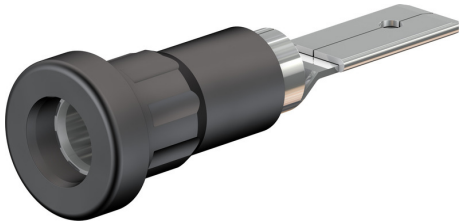


EB4-B



Item number 23.1015-*

Insulated, Ø 4 mm, rigid. Brass sheet, punched and rolled. The socket is pressed into predrilled panels of plastic, metal etc. Flat connecting tab 4.8 mm x 0.8 mm, can be bent to 90°, once only.

Technical data

Diameter of plug system	4 mm
Rated Values	30 VAC, 25 A / 60 VDC, 25 A
Surface treatment electrical contact	Ni
Base material electrical contact	CuZn
Colours *	20 21 22 23 24 25 26 27 28 29
Test accessory acc. to	IEC EN 61010-2-030
Component parts	I-EB4-B; B-EB4-B
Remarks	Accessories: Flat connecting receptacles FSH4,8x0,8; Press-in tool MB4