

## Machine vices MSR

Mechanical clamping system without power intensifier, manually operated



### Application:

For universal use on milling machines and machining centres.

### Execution:

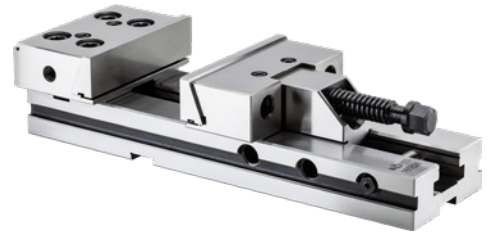
- Body made of hardened steel (60 HRC).
- Hardened (60 HRC) and polished guides.
- Repeat clamping accuracy: 0.02.
- Aligned on the machine table via longitudinal and transverse grooves 20H7.
- Can be used on graduated swivel plates.

### Advantage:

- Bolt system for rapid clamping range adjustment.

### Delivery:

1x MSR machine vice, including spanner, stop, pull-down jaws and 4x adjustable clamps



<b>Art. no.</b>	<b>28720 150</b>
<b>Brand</b>	RÖHM
<b>Manufacturer Part Number</b>	161826
<b>Jaws width</b>	150 mm
<b>Clamping width</b>	300 mm
<b>Jaws height</b>	40 mm
<b>Body length</b>	520 mm
<b>Body width</b>	125 mm
<b>Clamp in height</b>	50 mm
<b>Height</b>	100 mm
<b>Max. tension force</b>	50 kN
<b>Clamping repeatability</b>	0.02 mm
<b>Weight</b>	29.5 kg
<b>Gross Weight</b>	31.800 kg
<b>Product Group</b>	203

### EAN

4019208190228