

CURRENT TRANSFORMER, 3-PHASE FOR MOUNTING ONTO CONTACTOR AND INSTALLING AS A SINGLE UNIT 820A / 1A, 0.1VA



Figure similar

Product designation		current transformer for overload protection
<b>General technical data:</b>		
Protection class IP		IP20
Equipment marking		T
<ul style="list-style-type: none"> <li>• acc. to DIN EN 61346-2</li> <li>• acc. to DIN EN 81346-2</li> </ul>		T
<b>Inputs/ Outputs:</b>		
Current at input	A	205 ... 820
Current at output maximum	A	1
<b>Installation/ mounting/ dimensions:</b>		
Mounting type		screw mounting for mounting on contactors and stand-alone installations
Height	mm	195
Width	mm	230
Depth	mm	170
<b>Connections/ Terminals:</b>		
Type of electrical connection		flat connector
<ul style="list-style-type: none"> <li>• at input</li> <li>• at output</li> </ul>		screw-type terminals
<b>Ambient conditions:</b>		
Ambient temperature		
<ul style="list-style-type: none"> <li>• during operation</li> </ul>	°C	-25 ... +60
<b>Main circuit:</b>		

Number of poles for main current circuit

3

Certificates/ approvals:

General Product Approval	For use in hazardous locations	other
--------------------------	--------------------------------	-------



[other](#)

[Declaration of Conformity](#)

Further information

Information- and Downloadcenter (Catalogs, Brochures,...)

<http://www.siemens.com/industrial-controls/catalogs>

Industry Mall (Online ordering system)

<http://www.siemens.com/industrymall>

Cax online generator

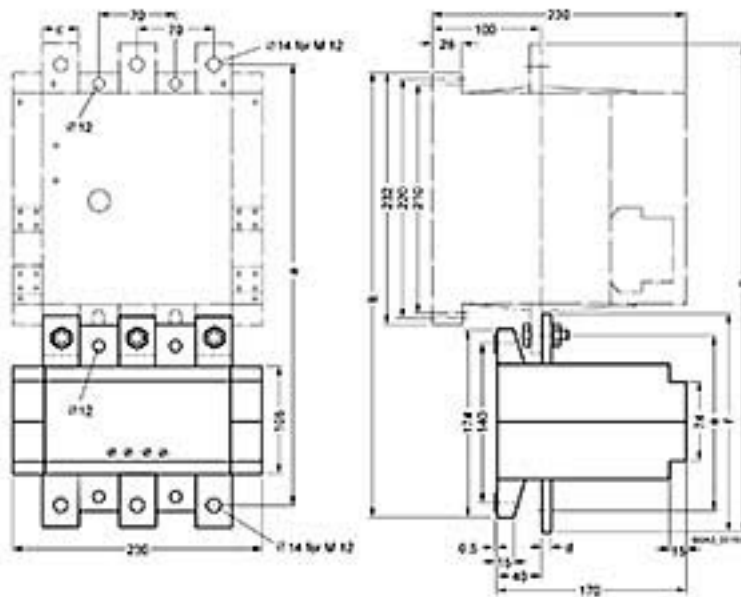
<http://support.automation.siemens.com/WW/CAXorder/default.aspx?lang=en&mlfb=3UF18683GA00>

Service&Support (Manuals, Certificates, Characteristics, FAQs,...)

<http://support.automation.siemens.com/WW/view/en/3UF18683GA00/all>

Image database (product images, 2D dimension drawings, 3D models, device circuit diagrams, EPLAN macros, ...)

[http://www.automation.siemens.com/bilddb/cax\\_de.aspx?mlfb=3UF18683GA00&lang=en](http://www.automation.siemens.com/bilddb/cax_de.aspx?mlfb=3UF18683GA00&lang=en)



Current transformers	Contactors	a	b	c	d	e	f	g
3UF18 68-3FA00	3TF16	300	308	50	5	145	175	420
3UF18 68-3GA00	3TF16	410	408	40	8	150	190	450

last modified:

09.03.2015