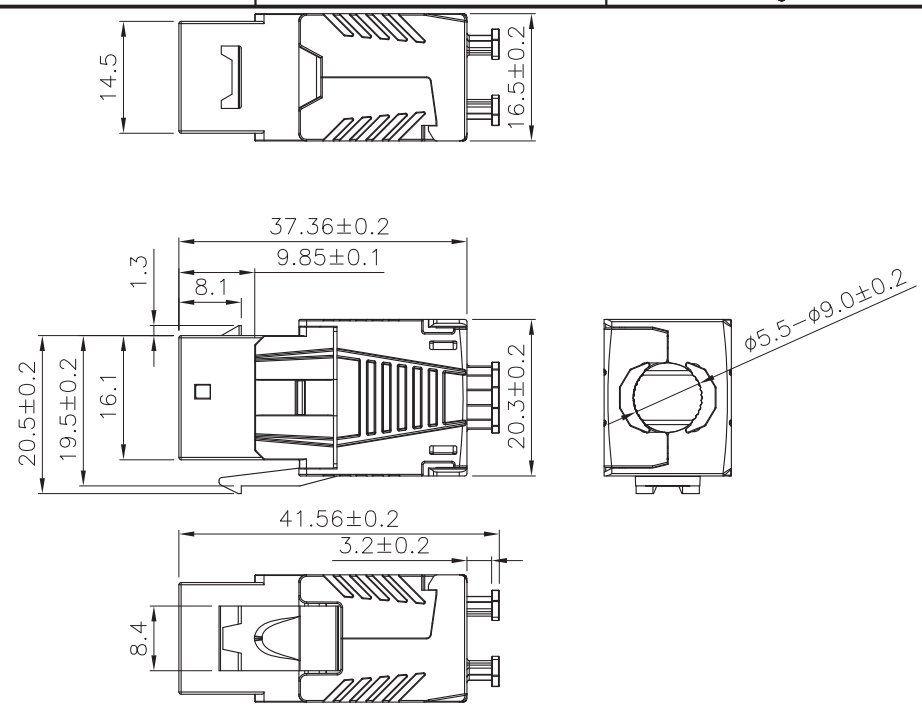
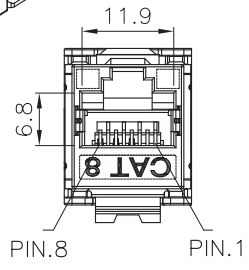
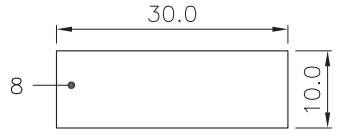


SCALE 1/1



Specification :

- Material :
- RJ45 Jack :
    - Housing : Zinc die-casting with nickel plated.
    - Contact bracket : PC, UL 94-V2, transparent color.
  - RJ45 Jack contact :
    - Material : Phosphor bronze with nickel plated.
    - Finish : 50 micro-inch gold plated on plug contact area.
    - PCB : FR4 UL 94V-0.
  - Cap A&B : Zinc die-casting with nickel plated.
  - IDC :
    - Housing : PC, white color, UL 94-V2.
    - Terminal : Phosphor bronze with tin plated.
  - Cap : PC, white color, UL 94-V2.
  - Grounding contact : Stainless steel.
  - Grounding contact block : Zinc die-casting with nickel plated.
  - Copper foil tape.
  - PCB : UL 94V-0.

- Performance :
- T568A & T568B wiring.
  - Insertion force : 30N max. (IEC 60603-7-81).
  - Retention strength : 7.7 kg between Jack and Plug.
  - Operating temperature : -10°C to 60°C. (ISO/IEC TR 11801-9901).
  - Life time :
    - Jack : 750 cycles min. (ISO/IEC 11801, IEC 60603-7-81).
    - IDC : Suitable for 22-24AWG stranded and solid wire, min. 20-installation cycles.
  - The Cat 8 transmission performance is in compliance with the ISO/IEC TR 11801-9901 Class I standard.

Figure D.2-Panel drawing

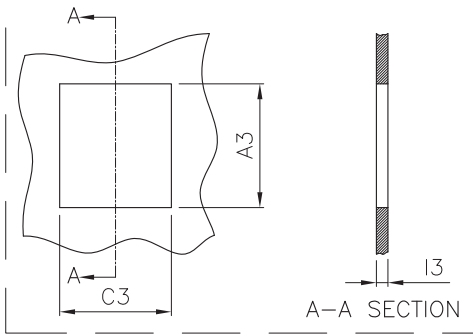


Table D.2-Dimensions

| Letter | Maximum mm | Minimum mm |
|--------|------------|------------|
| A3     | 19.61      | 19.30      |
| C3     | 15.04      | 14.78      |
| I3     | 1.54       | 1.22       |

|         |  |
|---------|--|
| Item No | 26.11.0381   |
| Desc    | ROLINE Cat.8 Shielded RJ45 Keystone Jack, toolless |

|  |                              |             |       |        |
|--|------------------------------|-------------|-------|--------|
| "#" : Matching DIM.<br>"*" : Important DIM.<br>Others General DIM. | DRAWING                      | 26.JUL.2018 | YiSi  |        |
|  | CHECK                        | 26.JUL.2018 | Jane  |        |
|  | APPROVAL                     | 26.JUL.2018 | Frank |        |
|  | DATE                         | NAME        |       |        |
| GENERAL TOLERANCE OF DIMENSIONS                                    | SCALE                        | 1/1 (A4)    | UNIT  | mm     |
| X.XXX ±0.005<br>X.XX ±0.05<br>X.X ±0.1                             | DRAWING NO. KJ58F-C8-FS(SA1) |             |       |        |
| DRAWING CLASSIFICATION   |                              | S           | SHEET | 1 OF 1 |



| No. | MODIFIED AREA | ORIGINAL | MODIFY | DATE | MODIFIER |
|-----|---------------|----------|--------|------|----------|
|     |               |          |        |      |          |