



## Model Number

NJ4-F-N

## Features

- Comfort series
- 4 mm non-flush

## Technical Data

### General specifications

Switching function		Normally closed (NC)
Output type		NAMUR
Rated operating distance	$s_n$	4 mm
Installation		non-flush
Assured operating distance	$s_a$	0 ... 3.24 mm
Reduction factor $r_{AI}$		0.4
Reduction factor $r_{Cu}$		0.3
Reduction factor $r_{304}$		0.8
Output type		2-wire

### Nominal ratings

Nominal voltage	$U_o$	8.2 V ( $R_i$ approx. 1 k $\Omega$ )
Switching frequency	f	0 ... 2000 Hz
Hysteresis	H	typ. %
Current consumption		
Measuring plate not detected		$\geq 3$ mA
Measuring plate detected		$\leq 1$ mA

### Ambient conditions

Ambient temperature		-25 ... 100 °C (-13 ... 212 °F)
---------------------	--	---------------------------------

### Mechanical specifications

Connection type		cable PVC , 2 m
Core cross-section		0.75 mm <sup>2</sup>
Housing material		PA 6
Sensing face		PA 6
Degree of protection		IP67
Cable		
Bending radius		> 10 x cable diameter

### General information

Use in the hazardous area		see instruction manuals
Category		1G; 2G

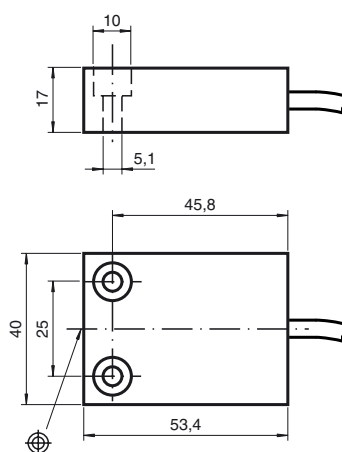
### Compliance with standards and directives

Standard conformity		
NAMUR		EN 60947-5-6:2000 IEC 60947-5-6:1999
Standards		EN 60947-5-2:2007 EN 60947-5-2/A1:2012 IEC 60947-5-2:2007 IEC 60947-5-2 AMD 1:2012

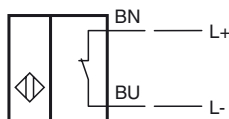
### Approvals and certificates

FM approval		
Control drawing		116-0165
UL approval		
Ordinary Location		E87056
Hazardous Location		E501628
Control drawing		116-0451
CSA approval		cCSAus Listed, General Purpose
CCC approval		CCC approval / marking not required for products rated $\leq 36$ V

## Dimensions



**Electrical Connection**



**Equipment protection level Ga**

CE marking	CE 0102	
ATEX marking	Ex II 1G Ex ia IIC T6...T1 Ga The Ex-related marking can also be printed on the enclosed label.	
Standards	EN 60079-0:2012+A11:2013, EN 60079-11:2012 Ignition protection "Intrinsic safety" Use is restricted to the following stated conditions	
Appropriate type	NJ4-F-N...	
Effective internal capacitance $C_i$	≤ 150 nF ; a cable length of 10 m is considered.	
Effective internal inductance $L_i$	≤ 100 μH ; a cable length of 10 m is considered.	
Highest permissible ambient temperature	Details of the correlation between the type of circuit connected, the maximum permissible ambient temperature, the temperature class, and the effective internal reactance values can be found on the EU-type examination certificate. <b>Note:</b> Use the temperature table for category 1 !!! The 20 % reduction in accordance with EN 1127-1 has already been applied to the temperature table for category 1.	

**Special conditions**

**Equipment protection level Gb**

CE marking	CE 0102	
ATEX marking	Ex II 1G Ex ia IIC T6...T1 Ga The Ex-related marking can also be printed on the enclosed label.	
Standards	EN 60079-0:2012+A11:2013, EN 60079-11:2012 Ignition protection "Intrinsic safety" Use is restricted to the following stated conditions	
Appropriate type	NJ4-F-N...	
Effective internal capacitance $C_i$	≤ 150 nF ; a cable length of 10 m is considered.	
Effective internal inductance $L_i$	≤ 100 μH ; a cable length of 10 m is considered.	
Maximum permissible ambient temperature $T_{amb}$	Details of the correlation between the type of circuit connected, the maximum permissible ambient temperature, the temperature class, and the effective internal reactance values can be found on the EU-type examination certificate.	

**Special conditions**

**Equipment protection level Da**

CE marking	CE 0102	
ATEX marking	Ex II 1D Ex ia IIIC T135°C Da The Ex-related marking can also be printed on the enclosed label.	
Standards	EN 60079-0:2012+A11:2013, EN 60079-11:2012 Ignition protection "Intrinsic safety" Use is restricted to the following stated conditions	
Appropriate type	NJ4-F-N...	
Effective internal capacitance $C_i$	≤ 150 μF A cable length of 10 m is considered.	
Effective internal inductance $L_i$	≤ 100 μH A cable length of 10 m is considered.	

**Special conditions**

Release date: 2019-05-22 11:09 Date of issue: 2019-05-22 106431\_eng.xml