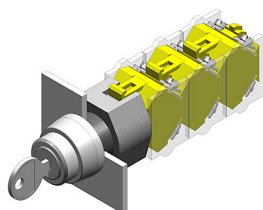


EAO – Your Expert Partner for Human Machine Interfaces

704.121.0 - Keylock switch actuator 2 positions

704.121.0 - Keylock switch actuator 2 positions



Attention: The preview is based on a sample product. This can differ from your current configuration.

Mounting

Mounting cut-out Ø 22,3 mm
Design raised

Front

Front shape round
Front dimension Ø 29 mm
Front bezel colour natural
Front bezel material Aluminium

Other Attributes

Weight 0,070 kg

Operating-/Indication part

Switching angle

IP-Rating

Front protection IP65

Actuator

Switching action

Switching element

Rotary positions 2
max. number of switching
elements 3

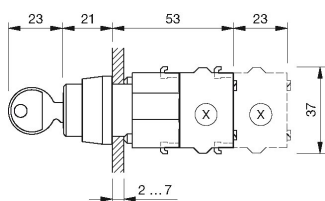
Function

Keylock switch

EAO – Your Expert Partner for Human Machine Interfaces

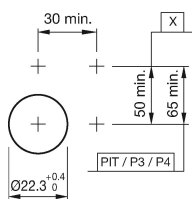
704.121.0 - Keylock switch actuator 2 positions

Dimensions



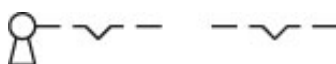
X = Screw terminal

Mounting cut-outs

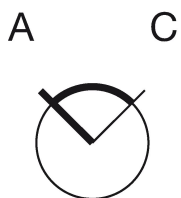


PIT = Push-in terminal

Wiring diagram



Switching positions



Additional information

Locknumbers 251, lock type Ronis
Two keys are supplied with each key lock switch
Further lock numbers see «Technical data»
Max. 3 switching elements can be clipped on

Legend

Switching action: A = Rest, C = Maintained