

HQI-TS 1000 W/D/S PRO

POWERSTAR HQI-TS | Short arc, no outer bulb for enclosed luminaires



Areas of application

- Sports stadiums and floodlight systems
- Sports halls and multi-purpose halls
- Airports
- Solar simulation, material testing
- Approved only for use in enclosed luminaires
- Outdoor applications only in suitable luminaires

Product benefits

- High efficiency
- Good to excellent color rendering
- Excellent color stability
- Small loss of luminous flux over the life of the lamp
- Hot restrike capable
- Compact dimensions for small spotlights
- Good positioning thanks to K12s base

Product features

- POWERSTAR quartz technology
- Light colors: neutral white (NDL), daylight (D)



Product datasheet

Technical data

Electrical data

Nominal wattage	1000 W
Rated wattage	1000.00 W
Lamp current	9.6 A
PFC capacitor at 50 Hz	85 μ F ¹⁾
Nominal voltage	120 V
Ignition voltage	4.0 / 36 kVp ²⁾
Rated lamp efficacy (standard condition)	90 lm/W
Rated luminous flux	90000 lm

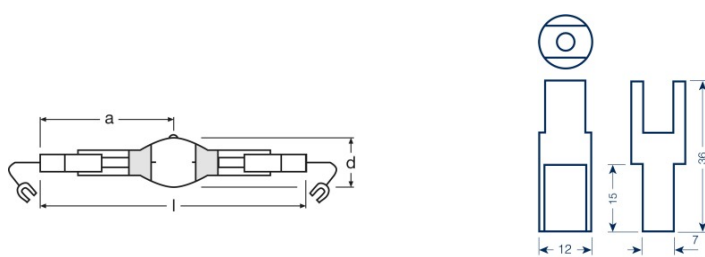
¹⁾ At rated voltage and $\cos \varphi \geq 0.9$

²⁾ Minimum / Maximum

Photometrical data

Color rendering index Ra	85
Color temperature	6100 K
Light color	860
Rated LLMF at 2,000 h	0.98
Rated LLMF at 4,000 h	0.98
Rated LLMF at 6,000 h	0.97
Rated LLMF at 8,000 h	0.88
UV protection	No

Dimensions & weight



K12s-36

Diameter	41.0 mm
Length	187.0 mm
Light center length (LCL)	93.0 mm
Product weight	58.50 g

Product datasheet

Temperatures & operating conditions

Maximum permitted outer bulb temperature	950 °C
Maximum permitted pinch temperature	390 °C

Lifespan

Rated lamp survival factor at 2,000 h	0.95
Rated lamp survival factor at 4,000 h	0.77
Rated lamp survival factor at 6,000 h	0.65
Rated lamp survival factor at 8,000 h	0.50
Lifespan B50	8000 h

Additional product data

Base (standard designation)	K12s-36
Design / version	Clear
Lamp mercury content	70.0 mg

Capabilities

Dimmable	No
Burning position	p15
Enclosed luminaire required	Yes
Hot restart	Yes

Certificates & standards

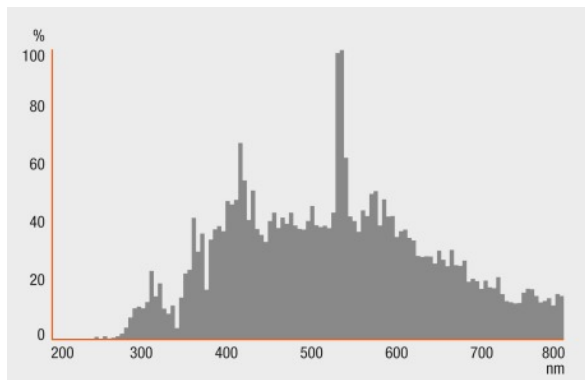
Energy efficiency class	A+
Energy consumption	1100 kWh/1000h

Country specific categorizations

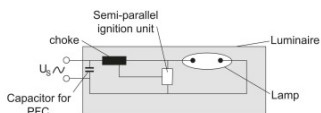
ILCOS	MN-1000/961-H/E/SL-K12s=36-41/187/H
-------	-------------------------------------

Product datasheet

Light Distribution



Spectral power distribution



Circuit diagram

Logistical Data

Product code	Product description	Packaging unit (Pieces/Unit)	Dimensions (length x width x height)	Volume	Gross weight
4008321525475	HQI-TS 1000 W/D/S PRO	Shipping carton box 10	395 mm x 265 mm x 166 mm	17.38 dm ³	1436.00 g

The mentioned product code describes the smallest quantity unit which can be ordered. One shipping unit can contain one or more single products. When placing an order, for the quantity please enter single or multiples of a shipping unit.

Product datasheet

Disclaimer

Subject to change without notice. Errors and omission excepted. Always make sure to use the most recent release.