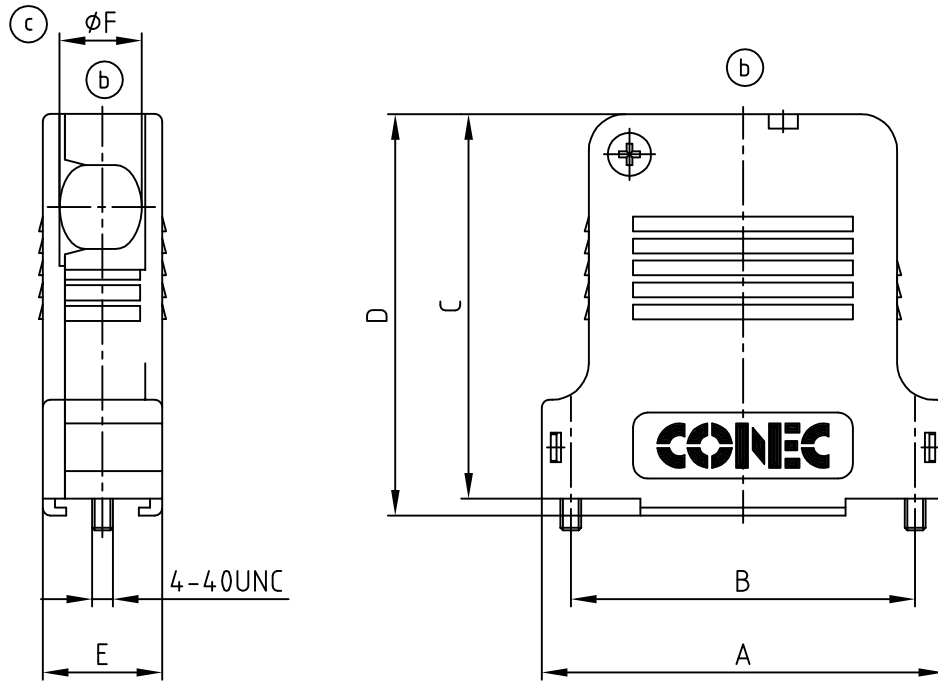


used for: D-SUB



(b) HOOD ASSEMBLY CONSISTS OF:

- 1 x HOOD + COVER: PBT UL 94 V-0; BLACK
- 1 x PRESS INSERT: PBT UL 94 V-0; BLACK
- 2 x JACKSCREWS: BRASS; NICKEL PLATED
- 2 x SCREW FOR STRAIN RELIEF: STEEL; ZINC PLATED
- 1 x COVER SCREWS: STEEL; NICKEL PLATED
- 1 x STRAIN RELIEF: STEEL; NICKEL PLATED

TECHNICAL DATA:

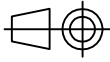

- TEMPERATURE RANGE: -33°C to +90°C

(c)

| Pos. | A | B | C | D | E | ϕF cable diameter | | PART NO. |
|------|------|------|------|------|------|-------------------------|----------------------|------------|
| | | | | | | WITH PRESS INSERT | WITHOUT PRESS INSERT | |
| 9 | 32.9 | 25.0 | 39.5 | 41.8 | 16.3 | 4.0 - 6.3 | 6.4 - 8.6 | 165X13419X |
| 15 | 41.2 | 33.3 | 45.5 | 47.8 | 16.3 | 4.0 - 6.3 | 6.4 - 8.6 | 165X13429X |
| 25 | 54.9 | 47.0 | 52.5 | 54.8 | 16.3 | 6.5 - 8.5 | 8.6 - 12.0 | 165X13439X |
| 37 | 71.4 | 63.5 | 55.0 | 57.8 | 18.7 | 8.5 - 10.9 | 11.0 - 14.0 | 165X13449X |
| 50 | 69.0 | 61.1 | 55.0 | 57.8 | 19.5 | 8.5 - 10.9 | 11.0 - 14.0 | 165X13459X |

Directive 2002/95/EC RoHS compliant

THIS DRAWING MAY NOT BE COPIED OR REPRODUCED IN ANY WAY, AND MAY NOT BE PASSED ON TO A THIRD PARTY WITHOUT WRITTEN PERMISSION.
 OWNERSHIP AND COPYRIGHT OF CONEC GmbH
 DO NOT ALTER CAD DRAWING BY HAND

| tolerance | |  | | scale: | 1:1 |
|---|-------------|---|--------|-------------|--|
| 2000 | date | name | | material: | SEE TECHNICAL DATA |
| drawn | 26.06. | A. Mickenbecker | | title: | PLASTIC HOOD WITH SIDE CABLE EXIT 9 to 50pos. |
| appd. | 26.06. | E. Mickenbecker | | | |
| norm | | | | | |
| d-old | | | | | |
| 2 x c | Ä 3644 | 12.05.2010 | Petker | dwg no: | AutoCAD 2000 |
| 3 x b | Ä 2196 | 04.04.2005 | Lehmen | | DIN-A |
| rev. | description | date | name | | 4 |
|  | | | | | sh: 1/1 |
| | | | | product no: | SEE TABLE |



16K1A009A

product no: SEE TABLE