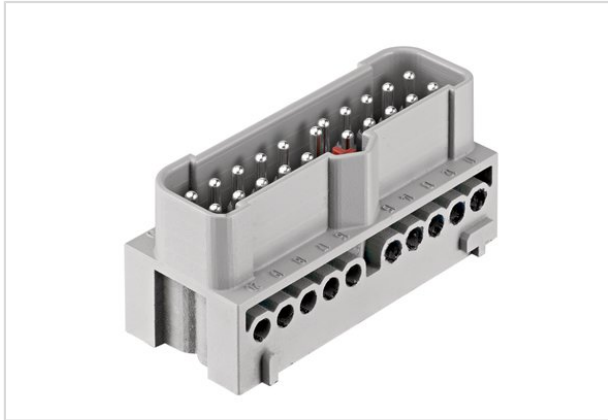


## Han-Eco Mod.20E-SMC-MI-SCT



Part number	19 41 020 2601
Specification	Han-Eco Mod.20E-SMC-MI-SCT
HARTING eCatalogue	<a href="https://b2b.harting.com/19410202601">https://b2b.harting.com/19410202601</a>

### Identification

Category	Inserts
Series	Han-Eco®

### Version

Termination method	Screw termination
Gender	Male
Size	16 B
With wire protection	Yes
Number of contacts	20
PE contact	Yes

### Technical characteristics

Conductor cross-section	0.75 ... 2.5 mm <sup>2</sup>
Electrical data acc. to IEC 61984	16 A 500 V 6 kV 3
Rated current	16 A
Rated voltage	500 V
Rated impulse voltage	6 kV
Pollution degree	3
Rated voltage acc. to UL	600 V
Rated voltage acc. to CSA	600 V
Insulation resistance	≥10 <sup>10</sup> Ω
Limiting temperature	-40 ... +125 °C
Tightening torque	0.5 Nm
Mating cycles	≥500

### Material properties

Material (insert)	Polycarbonate
Colour (insert)	RAL 7032 (pebble grey)



Pushing Performance

## Material properties

Material (contacts)	Copper alloy
Surface (contacts)	Silver plated
Material flammability class acc. to UL 94	V-0
RoHS	compliant with exemption
RoHS exemptions	6c: Copper alloy containing up to 4 % lead by weight
ELV status	compliant with exemption
China RoHS	50
REACH Annex XVII substances	No
REACH ANNEX XIV substances	No
REACH SVHC substances	Yes
REACH SVHC substances	Lead

## Commercial data

Packaging size	1
Net weight	78 g
Country of origin	Romania
Customs tariff number	85366990