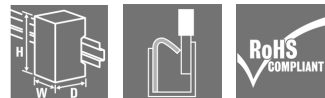


ACT20P
ACT20P-PRO DCDC II-P

Weidmüller Interface GmbH & Co. KG
Klingenbergstraße 26
D-32758 Detmold
Germany
Fon: +49 5231 14-0
Fax: +49 5231 14-292083
www.weidmueller.com

Similar to illustration**ACT20P: The flexible solution**

- Precise and highly functional signal converters
- Release levers simplify handling

General ordering data

Type	ACT20P-PRO DCDC II-P
Order No.	1481960000
Version	ACT20P, Signal converter/insulator, Signal converter/isolator, universal, 24...230 V AC/DC power supply
GTIN (EAN)	4050118291025
Qty.	1 pc(s).

ACT20P
ACT20P-PRO DCDC II-P

Weidmüller Interface GmbH & Co. KG
 Klingenbergstraße 26
 D-32758 Detmold
 Germany
 Fon: +49 5231 14-0
 Fax: +49 5231 14-292083
 www.weidmueller.com

Technical data
Dimensions and weights

Width	12.5 mm	Width (inches)	0.492 inch
Height	127.1 mm	Height (inches)	5.004 inch
Depth	113.7 mm	Depth (inches)	4.476 inch
Weight	130 g	Net weight	20 g

Environmental Product Compliance

REACH SVHC Lead 7439-92-1

Input

Number of inputs	1	Input signal	Voltage source, Current source
Input voltage	configurable, ± 40 mV... ± 300 V, Measuring range. min 40 mV	Input resistance, voltage	approx. 1 M Ω
Input current	configurable, ± 0.1 mA... \pm 100 mA, Measuring range min. 200 μ A	Input resistance, current	< 5 mA: approx. 100 Ω ; >5 mA: approx. 5 Ω

Output

Output voltage, note	Adjustable, 0... ± 10 V	Output current	Adjustable, 0... ± 20 mA
Cut-off frequency (-3 dB)	> 10 kHz / < 10 Hz	load impedance voltage	≥ 1 k Ω
load impedance current	≤ 600 Ω	Offset voltage	< 10 mV
Offset current	20 μ A	Status indicator	Green LED

Display

Type	Dot-matrix display with ticker text, green	Display value	current measured value, Configuration data
------	---	---------------	---

General data

Accuracy	< 0.05 % of measuring range	Configuration	DIP switch, or via display and push-buttons
Galvanic isolation	3-way isolator, between input / output / supply	Power consumption	≤ 2.3 W
Rail	TS 35	Step response time	≤ 50 μ s
Temperature coefficient	$\leq 0.01\%$ of the output measurement range / °C	Voltage supply	24...230 V DC ± 20 %, 24...230 V AC ± 10 % @ 48...62 Hz

Insulation coordination

EMC standards	EN 60079-0, EN 60079-15, EN 61010-1, EN 61140, EN 61326-1, UL 61010-1, SN29500 for MTBF	Galvanic isolation	3-way isolator, between input / output / supply
Impulse withstand voltage	5 kV (1.2/50 μ s)	Insulation voltage	4 kV _{eff} , input / output / power supply
Pollution severity	2	Rated voltage	600 V
Surge voltage category	II		

Creation date January 24, 2020 3:25:14 PM CET

Catalogue status 13.01.2020 / We reserve the right to make technical changes.

ACT20P
ACT20P-PRO DCDC II-P

Weidmüller Interface GmbH & Co. KG
 Klingenbergstraße 26
 D-32758 Detmold
 Germany
 Fon: +49 5231 14-0
 Fax: +49 5231 14-292083
 www.weidmueller.com

Technical data
Data for Ex applications (ATEX)

Marking II 3 G Ex nA IIC T4 Gc

Connection data

Type of connection	PUSH IN	Wire connection cross section AWG, min.	AWG 26
Wire connection cross section AWG, max.	AWG 14	Wire cross-section, solid, min.	0.2 mm ²
Wire cross-section, solid, max.	2.5 mm ²	Wire connection cross-section, finely stranded, min.	0.2 mm ²
Wire connection cross section, finely stranded, max.	2.5 mm ²	Wire connection cross-section, finely stranded with wire-end ferrules DIN 46228/4, min.	0.2 mm ²
Wire connection cross-section, finely stranded with wire-end ferrules DIN 46228/4, max.	2.5 mm ²		

Ratings IECEx/ATEX/cUL

Certificate No. (ATEX) DEMKO15ATEX1397X

Classifications

ETIM 6.0	EC002653	ETIM 7.0	EC002653
eClass 9.0	27-21-01-20	eClass 9.1	27-21-01-20
eClass 10.0	27-21-01-20		

Product information

Product information The universally configurable DC isolating amplifier ACT20P-PRO DCDC II isolates and converts analogue signals. An analogue input signal (current or voltage) is linearly converted into an analogue output signal (current or voltage) and galvanically isolated. The power supply is galvanically isolated from the input and output (3-way isolation).

Properties

- universal wide-range voltage supply
- universally configurable via DIP switch or via the LED display using control buttons
- Active or passive signal output
- Operating status display on a front panel LED
- Galvanic 3-way isolation between input, output and supply.

Approvals

Approvals



Approvals CULUS;GERMLLOYD;

ROHS Conform

Downloads

Approval/Certificate/Document of Conformity	Declaration of Conformity UL - certification DNV German Loyd approval ATEX certification
Software	DIP switch configuration tool
User Documentation	Instruction sheet

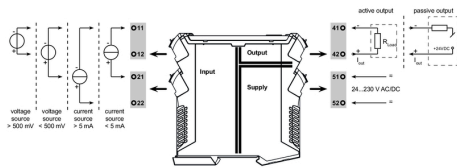
Creation date January 24, 2020 3:25:14 PM CET

**ACT20P
ACT20P-PRO DCDC II-P**

Weidmüller Interface GmbH & Co. KG
Klingenbergstraße 26
D-32758 Detmold
Germany
Fon: +49 5231 14-0
Fax: +49 5231 14-292083
www.weidmueller.com

Drawings

Wiring



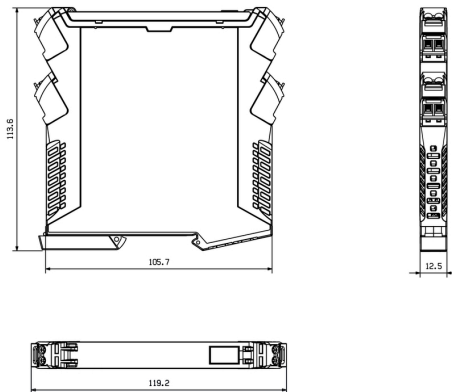
Configuration

Input range	DIP switch			
	1	2	3	4
configuration via display				
-10...+10 V				
-5...+5V				
0...300 V				
0...100 V				
0...30 V				
0...10 V				
2...10 V				
0...5 V				
1...5 V				
0...150 mV				
0...60 mV				
-20...+20 mA				
0...20 mA				
4...20 mA				
reserved				

Output range	DIP switch			
	5	6	7	8
configuration via display				
-10...+10 V				
-5...+5V				
10...0 V *				
0...10 V				
2...10 V				
5...0 V *				
0...5 V				
1...5 V				
-20...+20 mA				
-10...+10 mA				
20...0 mA *				
0...20 mA				
20...4 mA *				
4...20 mA				
reserved				

■ = ON * Inverted output range: Output polarity must be reversed!

Dimensioned drawing, Similar to illustration



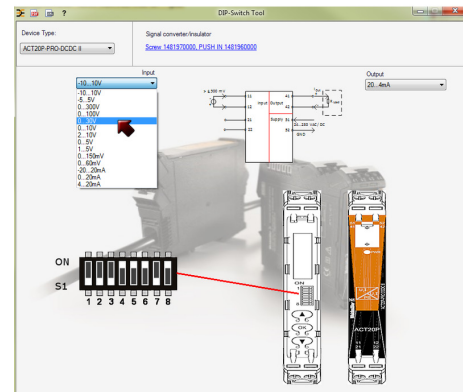
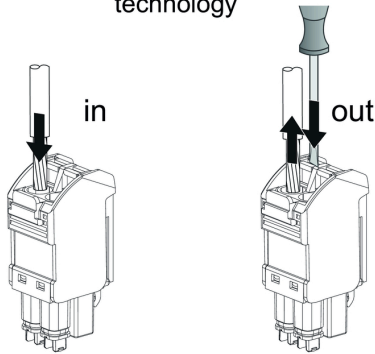
Coding for mismatch protection



**ACT20P
ACT20P-PRO DCDC II-P**

Weidmüller Interface GmbH & Co. KG
Klingenbergstraße 26
D-32758 Detmold
Germany
Fon: +49 5231 14-0
Fax: +49 5231 14-292083
www.weidmueller.com

**PUSH IN
technology**



example for DIP switch setting (with ACT20 tool)