

DIN 6303 | Knurled grip knobs

Steel or stainless steel

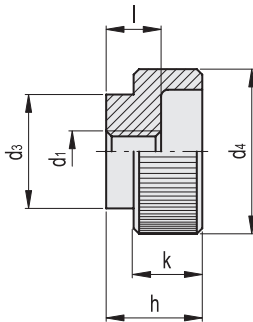


MATERIAL

- **DIN 6303:** black-oxide steel.
- **DIN 6303-NI:** AISI 303 stainless steel, sandblasted matte finish.

STANDARD EXECUTION

Threaded pass-through hole.



DIN 6303

Code	Description	d4	d1	d3	h	k	l	⚖️
GN.30101	DIN 6303-M5-A	20	M5	14	12	8	7	17
GN.30111	DIN 6303-M6-A	24	M6	16	14	10	8	30
GN.30121	DIN 6303-M8-A	30	M8	20	17	12	10	50
GN.30131	DIN 6303-M10-A	36	M10	28	20	14	12	90
GN.30141	DIN 6303-M12-A	40	M12	32	24	16	16	124

DIN 6303-NI



Code	Description	d4	d1	d3	h	k	l	⚖️
GN.30171	DIN 6303-M5-A-NI	20	M5	14	12	8	7	17
GN.30172	DIN 6303-M6-A-NI	24	M6	16	14	10	8	30
GN.30173	DIN 6303-M8-A-NI	30	M8	20	17	12	10	50
GN.30174	DIN 6303-M10-A-NI	36	M10	28	20	14	12	90
GN.30175	DIN 6303-M12-A-NI	40	M12	32	24	16	16	133

DIN 466 | Knurled grip knobs

Steel or stainless steel

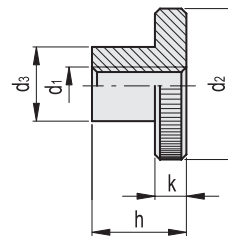
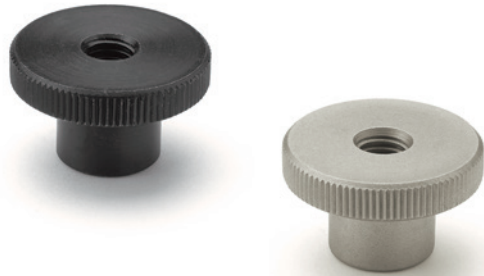


MATERIAL

- **DIN 466:** turned black-oxide steel.
- **DIN 466-NI:** AISI 303 stainless steel, sandblasted matte finish.

STANDARD EXECUTION

Hub, threaded pass-through hole.



DIN 466

Code	Description	d2	d1	d3	h	k	⚖️
GN.29501	DIN 466-M3	12	M3	6	7.5	2.5	3
GN.29511	DIN 466-M4	16	M4	8	9.5	3.5	7
GN.29521	DIN 466-M5	20	M5	10	11.5	4	13
GN.29531	DIN 466-M6	24	M6	12	15	5	23
GN.29541	DIN 466-M8	30	M8	16	18	6	44
GN.29551	DIN 466-M10	36	M10	20	23	8	87
GN.29561	DIN 466-M12	40	M12	22	25	10	118

DIN 466-NI



Code	Description	d2	d1	d3	h	k	⚖️
GN.29581	DIN 466-M4-NI	16	M4	8	9.5	3.5	7
GN.29582	DIN 466-M5-NI	20	M5	10	11.5	4	13
GN.29583	DIN 466-M6-NI	24	M6	12	15	5	23
GN.29584	DIN 466-M8-NI	30	M8	16	18	6	44
GN.29585	DIN 466-M10-NI	36	M10	20	23	8	84



Clamping knobs