

MATERIAL

Aluminium, epoxy resin coating, RAL 9005 black colour, matte finish.
AISI 304 stainless steel screw and nut.

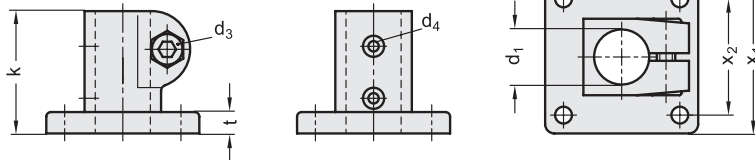
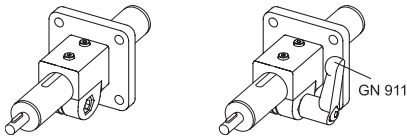
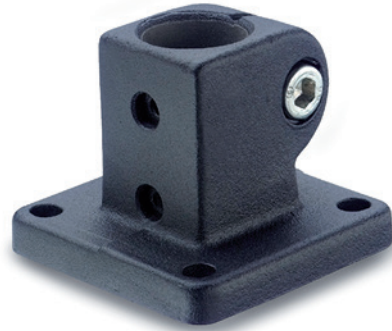
STANDARD EXECUTIONS

- **GN 162.1-B**: without sliding bushing.
- **GN 162.1-G**: with a polyamide based (PA) or polytetrafluoroethylene based (PTFE) technopolymer sliding bushing.

FEATURES AND APPLICATIONS

GN 162.1 connecting clamps can normally be matched with the linear actuators.

By clamping the guide hole d_1 it is possible to adjust the actuator positioning and to lock the slider after having set up the final position. The clamping screws d_3 may be replaced by clamping kits GN 911 (see page 1782).



Code	Description	d1#	d1##	d2	d3	d4	k	t	x1	x2	y1	y2	d3 Clamping kit	⚖️
GN.48206	GN 162.1-B18-2-SW	18	-	5.5	M6	M3	40	7	50	38	50	38	GN 911-M6-22	75
GN.48216	GN 162.1-G18-2-SW	-	18	5.5	M6	M3	40	7	50	38	50	38	GN 911-M6-22	70

Hole without sliding bushing.

Hole with sliding bushing.

