

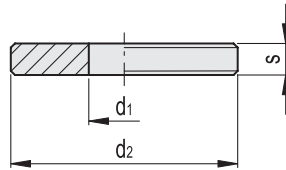
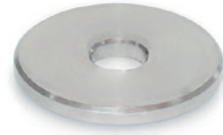
- 1
- 2
- 3
- 4
- 5
- 6
- 7
- 8
- 9
- 10
- 11
- 12
- 13
- 14
- 15
- 16
- 17
- 18

MATERIAL

AISI 304 stainless steel.

FEATURES AND APPLICATIONS

Typical application of GN 6343 washers is the mounting at the end of the shaft to fit handwheels with an axial keyway.



Code	Description	d1 +0.1 +0.3	d2 -0.2	s ±0.1	⚖️
GN.70401	GN 6343-NI-4-8-1	4	8	1	3
GN.70402	GN 6343-NI-4-8-2	4	8	2	6
GN.70405	GN 6343-NI-4-12-1	4	12	1	8
GN.70406	GN 6343-NI-4-12-2	4	12	2	16
GN.70407	GN 6343-NI-4-12-3	4	12	3	24
GN.70421	GN 6343-NI-5-10-1	5	10	1	5
GN.70422	GN 6343-NI-5-10-2	5	10	2	10
GN.70423	GN 6343-NI-5-10-3	5	10	3	14
GN.70426	GN 6343-NI-5-15-2	5	15	2	25
GN.70427	GN 6343-NI-5-15-3	5	15	3	37
GN.70441	GN 6343-NI-6-12-1	6	12	1	7
GN.70442	GN 6343-NI-6-12-2	6	12	2	14
GN.70443	GN 6343-NI-6-12-3	6	12	3	20
GN.70446	GN 6343-NI-6-20-2	6	20	2	45
GN.70447	GN 6343-NI-6-20-3	6	20	3	68
GN.70448	GN 6343-NI-6-20-5	6	20	5	110
GN.70462	GN 6343-NI-8-16-2	8	16	2	24
GN.70463	GN 6343-NI-8-16-3	8	16	3	36
GN.70464	GN 6343-NI-8-16-5	8	16	5	60
GN.70466	GN 6343-NI-8-25-2	8	25	2	70
GN.70467	GN 6343-NI-8-25-3	8	25	3	100
GN.70468	GN 6343-NI-8-25-5	8	25	5	170
GN.70482	GN 6343-NI-10-20-2	10	20	2	37
GN.70483	GN 6343-NI-10-20-3	10	20	3	56
GN.70484	GN 6343-NI-10-20-5	10	20	5	93
GN.70487	GN 6343-NI-10-30-3	10	30	3	120
GN.70488	GN 6343-NI-10-30-5	10	30	5	200
GN.70502	GN 6343-NI-12-20-2	12	20	2	32
GN.70503	GN 6343-NI-12-20-3	12	20	3	48
GN.70504	GN 6343-NI-12-20-5	12	20	5	80
GN.70507	GN 6343-NI-12-30-3	12	30	3	140
GN.70508	GN 6343-NI-12-30-5	12	30	5	230
GN.70522	GN 6343-NI-16-20-2	16	20	2	18
GN.70523	GN 6343-NI-16-20-3	16	20	3	27
GN.70524	GN 6343-NI-16-20-5	16	20	5	45
GN.70527	GN 6343-NI-16-30-3	16	30	3	150
GN.70528	GN 6343-NI-16-30-5	16	30	5	250

Machine elements