

EAO – Your Expert Partner for Human Machine Interfaces

704.927.6 - E-stop protective shroud

704.927.6 - E-stop protective shroud



Attention: The preview is based on a sample product. This can differ from your current configuration.

Mounting

| | |
|------------------|-----------|
| Mounting cut-out | Ø 22,3 mm |
| Design | raised |

Other Attributes

| | |
|-----------|----------|
| Weight | 0,017 kg |
| Dimension | Ø 65 mm |
| Material | Plastic |
| Colour | yellow |

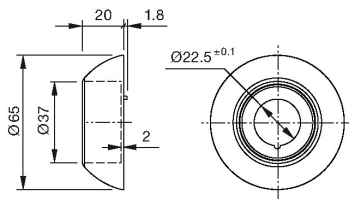
IP-Rating

| | |
|-------------------|-------|
| Front protection | IP65 |
| Protection degree | IK 07 |

EAO – Your Expert Partner for Human Machine Interfaces

704.927.6 - E-stop protective shroud

Dimensions



Additional information

Front panel thickness 1 2.5 mm other actuators

Front panel thickness 1 5 mm Emergency-stop switch

With anti-twist device

When using a protective shroud the e-stop or stop switch has to be turned by 180° to be mounted. See dimensional drawing

Do not use solvents when cleaning