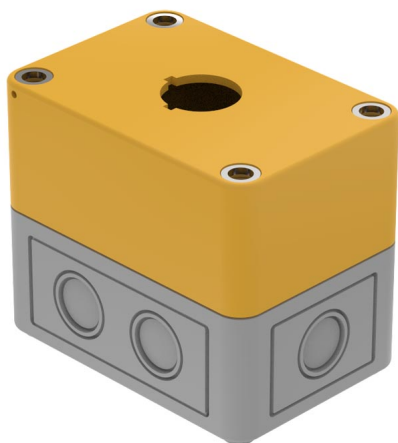


# EAO – Your Expert Partner for Human Machine Interfaces

## 704.945.8 - Emergency-stop enclosure

### 704.945.8 - Emergency-stop enclosure



*Attention: The preview is based on a sample product. This can differ from your current configuration.*

### Other Attributes

Dimension	L 94 x B 65 x H 81 mm
Weight	0,157 kg
Material	Plastic
Colour	grey, similar RAL 7035

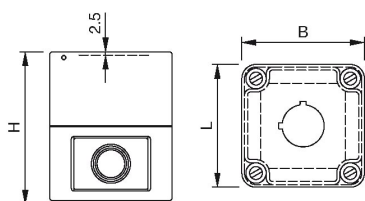
### IP-Rating

Protection degree	IP66
-------------------	------

# EAO – Your Expert Partner for Human Machine Interfaces

704.945.8 - Emergency-stop enclosure

## Dimensions



## Additional information

Bottom grey similar RAL 7035; cover lead-sealable, yellow similar RAL 1004

With anti-twist device

Openings for cable gland M16 or M20

To be used with one switching element Series 04