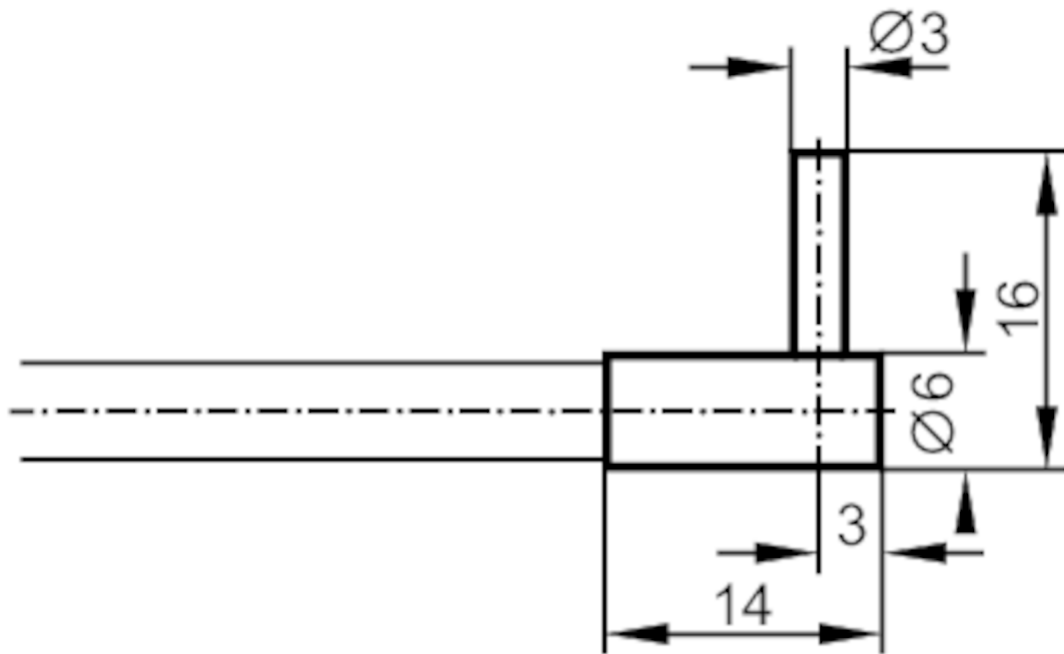




Fibre optic through beam sensor

FE-00-M-V-R3



Application	
Function principle	Through-beam sensor
Detection zone	
Range with fibre optic amplifier type	OKF; OUF; OOF
OKF	
Range of fibre optics [mm]	120
OOF	
Range of fibre optics [mm]	400
OUF	
Range of fibre optics [mm]	120
Operating conditions	
Ambient temperature [°C]	-20...150

E20493



Fibre optic through beam sensor

FE-00-M-V-R3

Mechanical data	
Weight [g]	95.5
Version of sensing head	angled
Sensing head diameter [mm]	3
Sensing head length [mm]	10
Total length [mm]	600
Min. bending radius [mm]	20
Fibre arrangement	●
Fibre material	glass
Fibre head material	stainless steel (1.4305 / 303)
Fibre sheath material	metal silicone
Accessories	
Accessories (supplied)	Mounting clamp 2 x, E20103
Remarks	
Pack quantity	1 pcs.