

## GN 184 Washers for screws

Steel

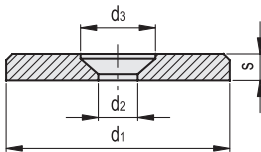
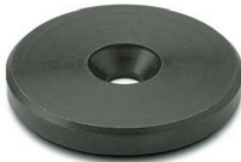


### MATERIAL

Turned and black-oxide steel.

### FEATURES AND APPLICATIONS

GN 184 washers are generally used on shafts to fit handwheels with an axial keyway.



Code	Description	d1	d3	d2	s	Countersunk screws	
GN.31101	GN 184-16	16	8	4.3	3	M4	4
GN.31111	GN 184-20	20	8	4.3	3	M4	6
GN.31121	GN 184-22	22	10	5.3	3.5	M5	9
GN.31131	GN 184-25	25	10	5.3	3.5	M5	12
GN.31141	GN 184-28	28	10	5.3	3.5	M5	15
GN.31151	GN 184-32	32	12	6.4	4	M6	21
GN.31161	GN 184-36	36	12	6.4	4	M6	30
GN.31171	GN 184-40	40	12	6.4	5	M6	45
GN.31181	GN 184-45	45	12	6.4	6	M6	70
GN.31191	GN 184-52	52	12	6.4	6	M6	94

## GN 184.5 Washers for screws

Stainless steel

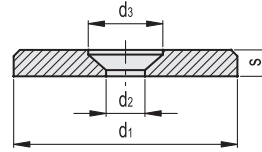


### MATERIAL

AISI 303 stainless steel, sand-blasted matte finish.

### FEATURES AND APPLICATIONS

GN 184.5 washers are generally used on shafts to fit handwheels with an axial keyway.



Code	Description	d1	d3	d2	s	Countersunk screws	
GN.31221	GN 184.5-16	16	8	4.3	3	M4	4
GN.31223	GN 184.5-20	20	8	4.3	3	M4	6
GN.31225	GN 184.5-22	22	10	5.3	3.5	M5	9
GN.31227	GN 184.5-25	25	10	5.3	3.5	M5	12
GN.31229	GN 184.5-28	28	10	5.3	3.5	M5	15
GN.31231	GN 184.5-32	32	12	6.4	4	M6	21
GN.31233	GN 184.5-36	36	12	6.4	4	M6	30
GN.31235	GN 184.5-40	40	12	6.4	5	M6	45
GN.31237	GN 184.5-45	45	12	6.4	6	M6	70
GN.31239	GN 184.5-52	52	12	6.4	6	M6	94



Machine elements