

GDS 30 impact screwdriver

920 W

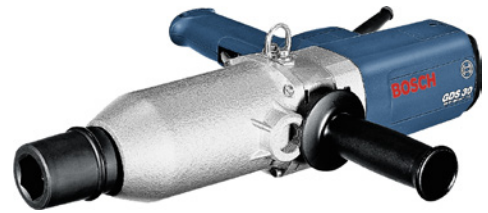
BOSCH

Application:

for heavy-duty screw connections on trucks, agricultural machinery, in commercial vehicle construction, in heavy industry and the petrochemical industry

Version:

- suspension hook for attaching to a spring balancer
- torsion rods (special accessories) guarantee that the required torque is maintained
- V-slot impact mechanism with low back torque and long service life
- additional handle with support plate can be fitted in two positions for improved handling



Art. no.	71031 010
Model	GDS 30
Manufacturer Article Number	0601435103
Power input	920 W
Suitable for screw	M30
Max. torque for hard screwing application	1000 Nm
Max. torque for soft screwing application	500 Nm
Tool holding device	1-inch external square
Weight	7.3 kg
With rubber-coated handle	No

EAN-Code

3165140041256