



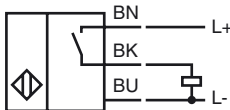
Model Number

MB60-8GM50-E2

Features

- Sensing range 60 mm based on DM60-31-15 magnet

Connection



Accessories

BF 8

Mounting flange, 8 mm

EXG-08

Quick mounting bracket with dead stop

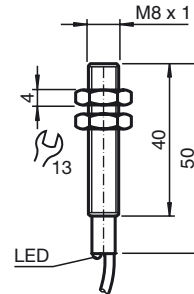
DM 25-32-07

Permanent magnet for magnetic field sensors

DM 60-31-15

Permanent magnet for magnetic field sensors

Dimensions



Technical Data

General specifications

Switching element function	PNP	NO
Rated operating distance	s_n	60 mm
Installation	flush in non-magnetic metal	
Output polarity	DC	
Assured operating distance	s_a	10 ... 48.6 mm

Nominal ratings

Operating voltage	U_B	10 ... 30 V
Switching frequency	f	0 ... 5000 Hz
Hysteresis	H	1 ... 10 %
Reverse polarity protection	reverse polarity protected	
Short-circuit protection	pulsing	
Voltage drop	U_d	≤ 2.5 V
Operating current	I_L	0 ... 200 mA
No-load supply current	I_0	≤ 10 mA
Switching state indication	LED, yellow	

Functional safety related parameters

MTTF _d	3909 a
Mission Time (T_M)	20 a
Diagnostic Coverage (DC)	0 %

Ambient conditions

Ambient temperature	-25 ... 75 °C (-13 ... 167 °F)
---------------------	--------------------------------

Mechanical specifications

Connection type	cable PUR , 2 m
Core cross-section	0.14 mm ²
Housing material	Stainless steel 1.4404 / AISI 316L
Sensing face	PBT
Protection degree	IP67

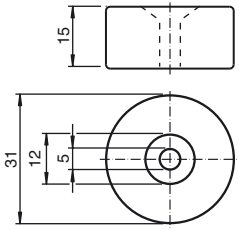
Compliance with standards and directives

Standard conformity	
Standards	EN 60947-5-2:2007 IEC 60947-5-2:2007

Approvals and certificates

Protection class	III
UL approval	cULus Listed, General Purpose
CSA approval	cCSAus Listed, General Purpose
CCC approval	CCC approval / marking not required for products rated ≤ 36 V

Magnet DM 60-31-15



Release date: 2013-03-04 12:55 Date of issue: 2013-03-04 218380_eng.xml