

### Product type designation

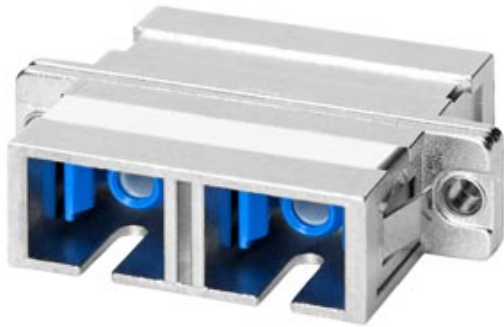
Product description

### FC FO SC Coupler

SC-Duplex-Coupler for FastConnect mounting

FC FO SC COUPLER ON-SITE MOUNTING ON FC FO CABLES

(62.5/200/230) PACKAGE: 5 PCS. DUPLEX COUPLER



### Transmission rate

Transfer rate / for Industrial Ethernet	10 Mbit/s, 100 Mbit/s, 1000 Mbit/s
Transfer rate / with PROFIBUS	9.6 kbit/s ... 12 Mbit/s

### Interfaces

Number of optical interfaces / for fiber optic cable	1
Design of the optical interface / for network components or terminal equipment	SC duplex coupling
Type of electrical connection / FastConnect	Yes

### Mechanical data

Material / of the enclosure	Metal and plastic
-----------------------------	-------------------

### Design, dimensions and weight

Type of cable outlet	180° cable outlet
Width	9 mm
Height	35 mm
Depth	28 mm
Net weight	18 g

### Permitted ambient conditions

Ambient temperature	
<ul style="list-style-type: none"> <li>during operation</li> </ul>	-40 ... +85 °C
<ul style="list-style-type: none"> <li>during storage</li> </ul>	-40 ... +85 °C
<ul style="list-style-type: none"> <li>during transport</li> </ul>	-40 ... +85 °C

Relative humidity / at 25 °C / without condensation / during operation / maximum	95 %
Protection class IP	IP20

### Product properties, functions, components / general

Product property	
<ul style="list-style-type: none"> <li>• silicon-free</li> </ul>	Yes
Product component	
<ul style="list-style-type: none"> <li>• strain relief</li> </ul>	Yes

### Standards, specifications, approvals

Certificate of suitability	
<ul style="list-style-type: none"> <li>• RoHS conformity</li> </ul>	Yes
<ul style="list-style-type: none"> <li>• UL approval</li> </ul>	No
<ul style="list-style-type: none"> <li>• Railway application in accordance with EN 50155</li> </ul>	No

### Further Information / Internet Links

Internet-Link	
<ul style="list-style-type: none"> <li>• to website: Selector SIMATIC NET SELECTION TOOL</li> </ul>	<a href="http://www.siemens.com/snst">http://www.siemens.com/snst</a>
<ul style="list-style-type: none"> <li>• to website: Industrial communication</li> </ul>	<a href="http://www.siemens.com/simatic-net">http://www.siemens.com/simatic-net</a>
<ul style="list-style-type: none"> <li>• to website: Industry Mall</li> </ul>	<a href="https://mall.industry.siemens.com">https://mall.industry.siemens.com</a>
<ul style="list-style-type: none"> <li>• to website: Information and Download Center</li> </ul>	<a href="http://www.siemens.com/automation/net/catalog">http://www.siemens.com/automation/net/catalog</a>
<ul style="list-style-type: none"> <li>• to website: Image database</li> </ul>	<a href="http://automation.siemens.com/bilddb">http://automation.siemens.com/bilddb</a>
<ul style="list-style-type: none"> <li>• to website: CAx Download Manager</li> </ul>	<a href="http://www.siemens.com/cax">http://www.siemens.com/cax</a>
<ul style="list-style-type: none"> <li>• to website: Industry Online Support</li> </ul>	<a href="https://support.industry.siemens.com">https://support.industry.siemens.com</a>

**last modified:** 16.03.2015