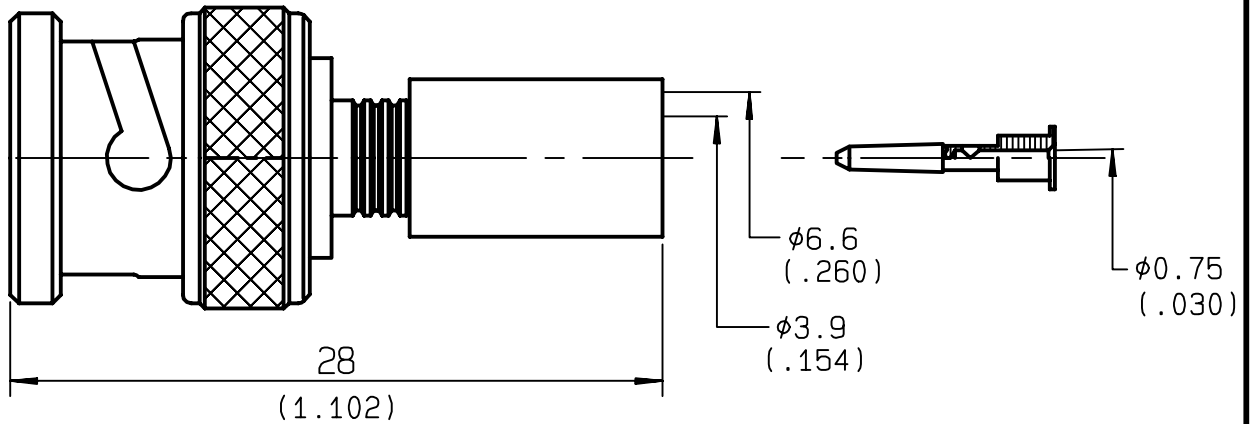


**STRAIGHT PLUG CRIMP TYPE  
CABLE 6/75+93**

**R142.085.000**  
**SERIES BNC 75**



NOMINAL IMPEDANCE	<b>75</b> Ω
FREQUENCY RANGE	<b>0-1.5</b> GHz
TEMPERATURE RATING	<b>-65/+165</b> °C
V.S.W.R	<b>1.30</b> + <b>0</b> x F(GHz)Maxi
RF INSERTION LOSS	<b>0.115</b> √F(GHz) dB Maxi
VOLTAGE RATING	<b>500</b> Veff Maxi
DIELECTRIC WITHSTANDING VOLTAGE	<b>1500</b> Veff Mini
INSULATION RESISTANCE	<b>5000</b> MΩMini
HERMETIC SEAL	<b>NA</b> Atm.cm <sup>3</sup> /s
LEAKAGE (pressurized only)	<b>NA</b>
MECHANICAL DURABILITY	<b>500</b> Cycles
WEIGHT	<b>9</b> gr
SPECIFICATION	<b>537 686</b>

CABLES : **KX 6A**  
**RG 59**

OTHERS CHARACTERISTICS

CABLE RETENTION	<b>136</b> N Mini
CENTER CONTACT RETENTION	
Axial force - mating end	<b>27</b> N Mini
Axial force - opposite end	<b>27</b> N Mini
Torque	<b>NA</b> cm.N Mini
RECOMMENDED TORQUES	
Mating	<b>NA</b> cm.N
Panel nut	<b>NA</b> cm.N
Clamp nut	<b>NA</b> cm.N

CONNECTOR PARTS	MATERIALS	FINISH	(all values are given ) in micrometers
BODY	BRASS	NICKEL 2	
OUTER CONTACT			
CENTER CONTACT	BRASS	GOLD 0.5 OVER NICKEL 2	
INSULATOR	PTFE	-	
GASKET	SILICONE RUBBER	-	
OTHERS PIECES	BRASS	NICKEL 2	

ISSUE	CREATION DATE	FILE PART-NUMBER
<b>9904G00</b>		



**RADIALL**®

TRIQUES

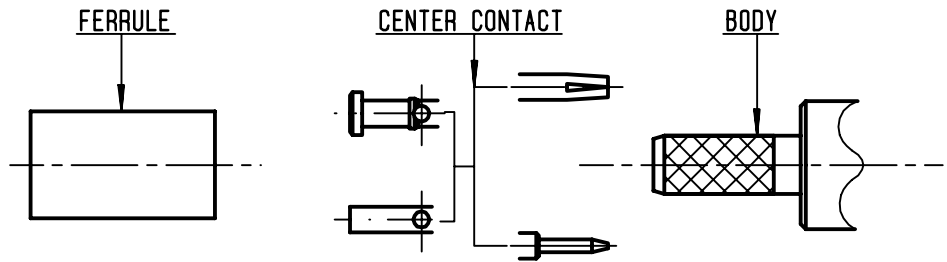
The information given here is subject to change without notice.  
Design changes may be in order to improve the product .

*Connect to the future*



**R142.085.000**

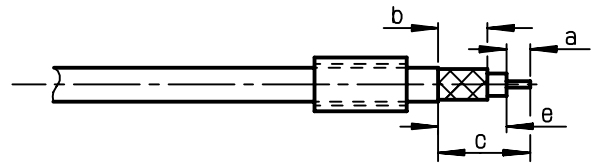
ISSUE 9904600 SERIES BNC 75



①

Slide ferrule onto cable  
Strip the cable .

-  
-



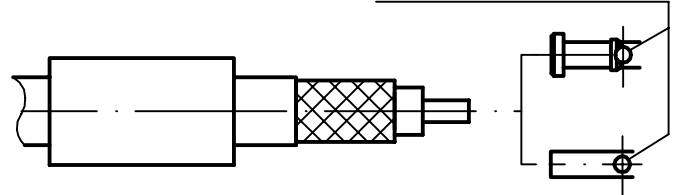
Stripping	a	b	c	d	e
inch	0.157	0.335	0.591	0	0
mm	4	8.5	15		

②

Slide center contact on until it bottoms against cable dielectric .  
Solder or crimp center contact .  
Crimping tool : R282 223 000 ( Hex. : 0.070 )  
or R282 293 000 ( M22520/5-01 )  
+ dies R282 235 013 ( M22520/5-13 ) .

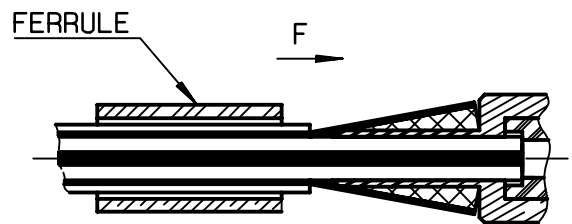
-

SOLDER / CRIMPING



③

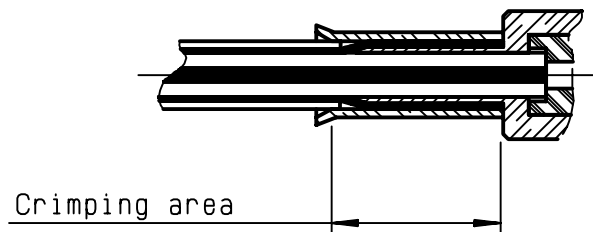
Fan the braid .  
Slide cable into the body until bottoms against insulator .  
Slide ferrule over the braid .  
(In direction F)



④

Crimp the ferrule with crimping tool R 282 223 000 ( Hex. : 0.255 ) or crimping tool R282 293 000 ( M22520/5-01 ) + dies R282 235 013 ( M22520/5-13 )  
Cut excess of braid if necessary .

-  
-  
-  
-



TRIQUES