

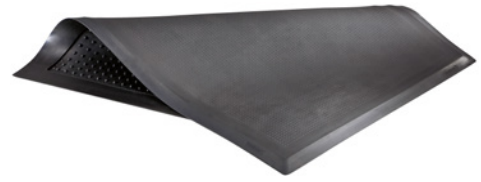
Workplace mat made of nitrile rubber, oil-resistant and flame-retardant

Flat structure, height 16 mm



Application:

The modern and ergonomic workplace mats protect the joints and spine, prevent slipping and thus ensure optimum sure-footedness in the workplace. The mats are ideal for walking and standing workplaces such as at workbenches, conveyor belts, assembly tables and turning and milling machines. The additional flame retardant effect means that they can be used in workplaces with weld splatter and flying sparks without problems.



Advantage:

- Due to the puzzle system, any surface can be laid out
- The easy solution for increased safety, health, comfort and productivity
- firm grip for secure footing and high position stability
- reduced muscular fatigue caused by increased physical activity
- prevention of adverse effects on health through heat insulation

Art. no.	50225 700
Brand	ERGOLASTEC
Manufacturer Part Number	SE05B55-16X1350X1000/O
Surface structure	Flat / closed
Material	Nitrile rubber
Length	1350 mm
Width	1000 mm
Material thickness	16 mm
Mat design	Single mat, type A
Resistance against	Oil, Acid, Fats, Petrol, Coolant
Min. temperature resistance	-35 °C
Max. temperature resistance	95 °C
Suitable for wet areas	Yes
Antistatic	No
Anti-fatigue	Yes
Non-slip	Yes
Compliant with REACH	Yes
Colour	Black
Gross Weight	2.000 kg
Product Group	5AD