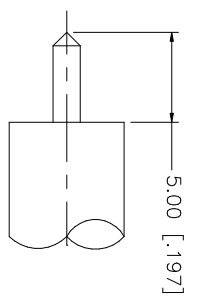
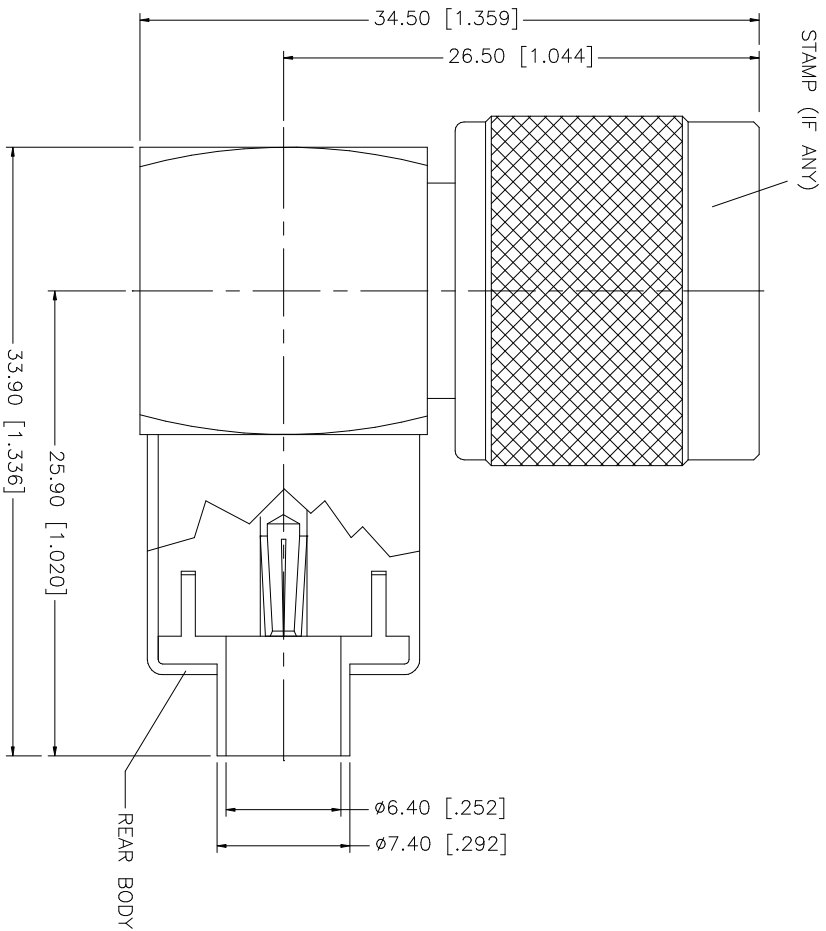


REV.	DATE	DESCRIPTION
A	12/09/03	UPDATE DRAWING FORMAT
B	01/18/06	MODIFY BACK END OF BODY/BARREL
C	08/30/06	ADD REAR BODY PLATING TO GOLD



RECOMMENDED CABLE STRIPPING DIM'S

QTY	FINISH	MATERIAL	DESCRIPTION
1	NATURAL	TEFLON	INSULATOR
1	GOLD	PHOS. BRONZE	CONTACT PIN
1	GOLD	BRASS	REAR BODY
1	NEXCOTE	BRASS	BODY

APPROVALS	DATE
DRAWN G.R.S.	08/30/06
CHECKED	
ISSUED	
SHEET 1 OF 1	

UNLESS OTHERWISE SPECIFIED DIMENSIONS ARE IN MILLIMETERS DIMENSIONS IN PARENS ARE INCHES AND FOR SUBSTITUTED EQUIVALENT STOCK TOLERANCES FOR MILLIMETERS ARE:	UNLESS OTHERWISE SPECIFIED DIMENSIONS ARE IN INCHES DIMENSIONS IN PARENS ARE MILLIMETERS AND FOR SUBSTITUTED EQUIVALENT STOCK TOLERANCES FOR INCHES ARE:
0.5 - 8mm ± 0.20mm	.020 - .315 = ± 0.007"
8 - 30mm ± 0.40mm	.315 - 1.180 = ± 0.015"
30 - 120mm ± 0.50mm	1.180 - 4.724 = ± 0.020"

DO NOT SCALE DRAWING	CAD FILE	DWG. NO.	REV.	SIZE	SCALE
	C:/172/172266.DWG	172266.DWG	C	A	NA

Amphenol Connex

N R/A DIRECT SOLDER PLUG
(FOR .250 SEMI RIGID CABLE)

PART NO. 172266