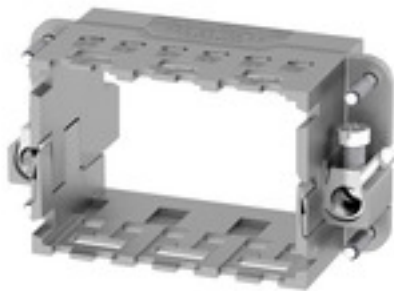


**ModuPlug  
HDC MF 10B AC**

**Weidmüller Interface GmbH & Co. KG**  
Klingenbergstraße 16  
D-32758 Detmold  
Germany  
Fon: +49 5231 14-0  
Fax: +49 5231 14-292083  
www.weidmueller.com

**Simple**

The innovative sliding frame has two defined lock-in positions for opening and closing. This enables simple and tool-free module assembly.

**General ordering data**

Type	HDC MF 10B AC
Order No.	<a href="#">1428960000</a>
Version	Frame
GTIN (EAN)	4050118233223
Qty.	1 pc(s).

**Data sheet**

**ModuPlug  
HDC MF 10B AC**

**Weidmüller Interface GmbH & Co. KG**  
 Klingenbergstraße 16  
 D-32758 Detmold  
 Germany  
 Fon: +49 5231 14-0  
 Fax: +49 5231 14-292083  
 www.weidmueller.com

**Technical data**

**Dimensions and weights**

Width	64 mm	Width (inches)	2.52 inch
Height	36.4 mm	Height (inches)	1.433 inch
Depth	34.4 mm	Depth (inches)	1.354 inch
Net weight	67.541 g		

**Temperatures**

Limit temperature	-40 °C ... 125 °C
-------------------	-------------------

**Environmental Product Compliance**

REACH SVHC	Lead 7439-92-1
------------	----------------

**General data**

Material	Diecast zinc	Number of slots	3
Plugging cycles	≥ 500	Series	ModuPlug
Size	4		

**PE connection data**

Conductor cross-section, max.	10 mm <sup>2</sup>	Conductor cross-section, min.	0.5 mm <sup>2</sup>
Connection type PE	Screw connection	Tightening torque, max. PE connection	1.2 Nm

**Classifications**

ETIM 5.0	EC002312	ETIM 6.0	EC002312
eClass 6.2	27-14-34-19	eClass 9.0	27-44-02-06
eClass 9.1	27-44-02-06		

**Approvals**

Approvals



ROHS	Conform
------	---------

**Downloads**

Brochure/Catalogue	<a href="#">CAT 3 HDC 17/18 EN</a> <a href="#">FL FIELDWIRING EN</a>
Engineering Data	<a href="#">EPLAN</a>
Engineering Data	<a href="#">STEP</a>

**Data sheet**

**ModuPlug  
HDC MF 10B AC**

**Weidmüller Interface GmbH & Co. KG**  
Klingenbergstraße 16  
D-32758 Detmold  
Germany  
Fon: +49 5231 14-0  
Fax: +49 5231 14-292083  
www.weidmueller.com

**Drawings**

