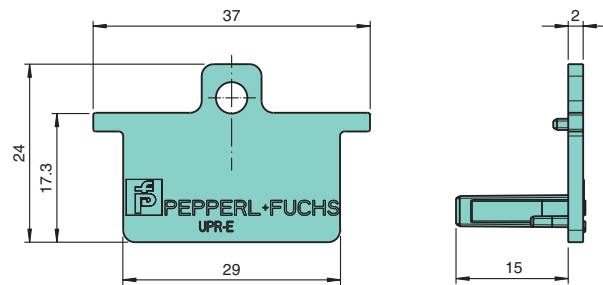


## Dimensions

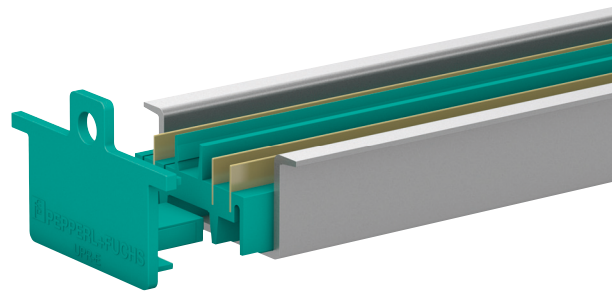


## Technical data

### Mechanical specifications

Material	Polycarbonate
Mass	approx. 10 g
Dimensions	17 x 37 x 24 mm (0.67 x 1.46 x 0.95 in)
Mounting	mounting on 35 mm DIN mounting rail acc. to DIN EN 60715

## Assembly



## Features

- Termination of DIN mounting rail
- Suitable for Power Rail UPR-\*\*-\*
- Suitable for profile rail K-DUCT

## Function

The end cap mounts in the 35 mm DIN mounting rail acc. to DIN EN 60715. The end cap is used to cover the end of the Power Rail.