

Collet chucks type ER metal-sealed, according to DIN 6499 A/ISO 15488

Can be used up to 120 bar, concentricity < 2 µm

ATORN[®]

Application

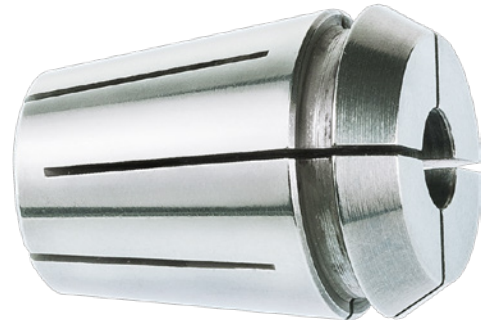
For use on precision collet chucks

Version

- Metal sealed up to 120 bar for internal coolant supply

Advantage

- Higher degree of concentricity extends service life of tool



| | |
|--------------------------|------------------|
| Art. No. | 23388 841 |
| Collet type | ER 16 |
| Clamping diameter | 7.5 mm |
| Outer diameter | 17 mm |
| Length | 27.5 mm |

EAN-Code

4050293679380