

## grinding and control vices, type PL-S MICRO

Operated with hexagon socket key

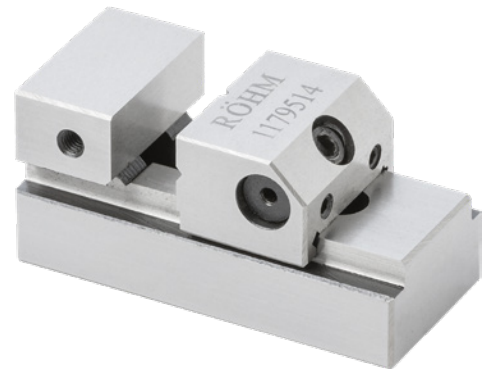


### Application:

For horizontal, vertical and lateral grinding, inspection and eroding tasks.

### Execution:

- Made of alloyed tool steel.
- Hardened and precision-ground.
- Quick adjustment.
- Perpendicularity tolerance 0.005 mm/100 mm (base area to fixed jaw clamping surfaces).
- Ref. no. 110-150, parallelism tolerance 0.002 mm/100 mm (base area to upper guide plate).
- Ref. no. 110-120: type PL-S MICRO, ref. no. 130-150: type PL-S.



<b>Art. no.</b>	<b>28600 110</b>
<b>Brand</b>	RÖHM
<b>Manufacturer Part Number</b>	1179514
<b>Model</b>	Type PL-S with quick adjustment
<b>Prism countersunk horizontally</b>	Yes
<b>Jaws width</b>	34 mm
<b>Jaws height</b>	15 mm
<b>Height 2</b>	20 mm
<b>Clamping width</b>	25 mm
<b>Height</b>	35 mm
<b>Body length</b>	75 mm
<b>Length 2</b>	20 mm
<b>Length 3</b>	25 mm
<b>Gross Weight</b>	0.351 kg
<b>Product Group</b>	202

### EAN

4019208228228