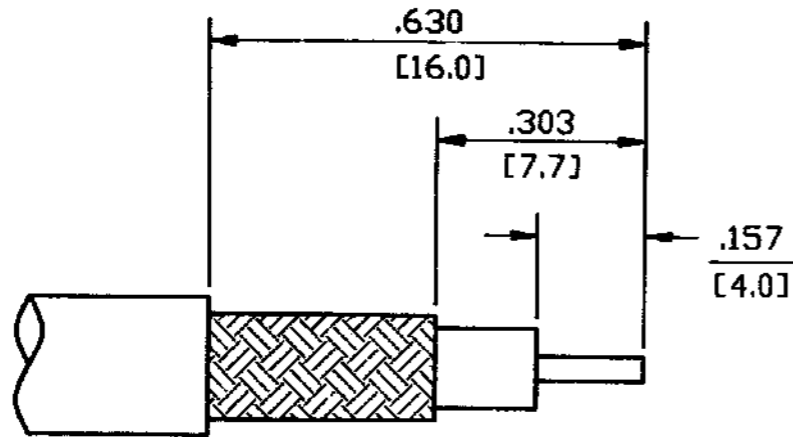


DO NOT SCALE THIS DRAWING

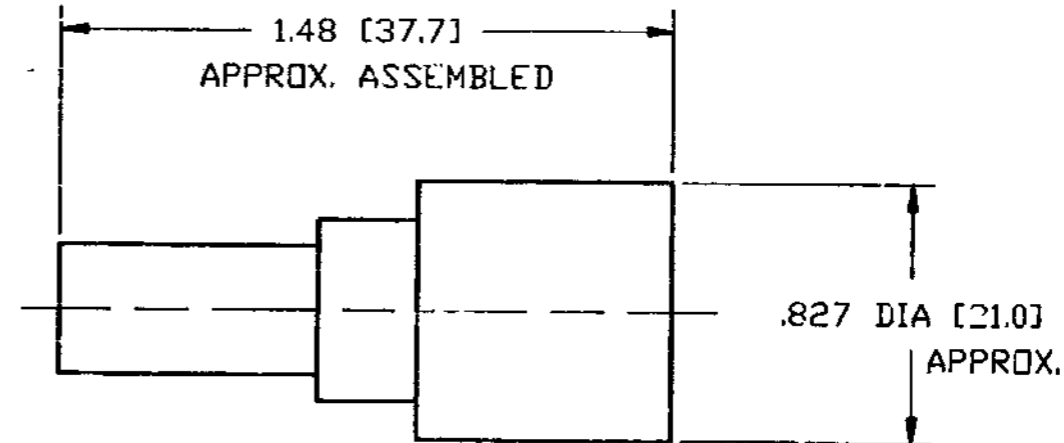
82-4426-11RFX

REVISIONS

DRAWING NUMBER	SYM	DESCRIPTION	DATE	E.C.O. NO.	APPR.
	A	OFFICIAL ENG. RELEASE TO MFG.	10/29/91	38063	JR



RECOMMENDED CABLE STRIPPING DIM'S



NOTES:

1. BRASS BODY, NICKEL PLATED.
2. TEFLON INSULATOR.
3. GOLD PLATED, BRASS CONTACT, .000003.
4. PACKAGED IN BAG 999-377.
5. USE AMPHENOL CRIMP TOOL #CTL-3.
6. CAPTIVATED CONTACT, .090 WIRE ENTRY.
7. 3 PC. (BODY, FERRULE, CONTACT).

ENGLISH [METRIC]

H:\DEPT611\N\082\ASSY\4426\11RFX

PART NO.	QUAN	UOM	DESCRIPTION	CODE	FINISH
----------	------	-----	-------------	------	--------

LIST OF MATERIAL

DRAWN BY TERRI ALBERA		DATE 4-29-91	TITLE N CRIMP CRIMP PLUG FOR RG-8, 213, 214 & ETHERNET CABLES 50 OHM		Amphenol Corporation RF/Microwave Operations Danbury, Conn. U.S.A.
CHECKED <i>[Signature]</i>		DATE 5-13-91	ENGINEER <i>[Signature]</i>		
QUALITY ASSURANCE <i>[Signature]</i>		DATE 7-11-91	MFG/ENG <i>[Signature]</i>		
DATE 9/18/91		CODE IDENTIFICATION 74368	DRAWING SIZE B	DRAWING NO. 82-4426-11RFX	

REMOVE ALL BURRS, BREAK CORNERS AND SHARP EDGES .005 MAXIMUM UNLESS OTHERWISE SPECIFIED.

NOTICE - These drawings, specifications, or other data (1) are, and remain the property of Amphenol Corp. (2) must be returned upon request; and (3) are confidential and are not to be disclosed to any person other than those to whom they are given by Amphenol Corp. The furnishing of these drawings, specifications, or other data by Amphenol Corp., or by any other person to anyone for any purpose is not to be regarded by implication or otherwise as in any manner licensing, granting rights or permitting such holder or any other person to manufacture, use or sell any product, process or design, patented or otherwise, that may in any way be related to or disclosed by said drawings, specifications or other data.

NEXT ASSY	USED ON	UNLESS OTHERWISE SPECIFIED DIMENSIONS ARE IN INCHES. TOLERANCES NOT OTHERWISE SPECIFIED ARE: 2 PLACE DECIMAL ± .015 (0.381 mm) 3 PLACE DECIMAL ± .005 (0.127 mm) ANGLES ± 1°
MATERIAL		REFERENCE DRAWING NO. EAR 962370
SPECIFICATION		
FINISH		

SCALE NTS SHEET OF