

PRODUCT NUMBER	NUMBER OF POS	DIM A	DIM B	DIM C	DIM D	DIM E	DIM F	DIM G	LOADED POSITION	HOUSING COLOR	PRODUCT FIGURE
87180-X44/-X44LF/-X44HLF	4	3.05	3.81	7.62	11.20	3.05	5.50	7.87	ALL POS.	BLACK	FIGURE 1
87180-X42/-X42LF/-X42HLF									2,3		
87180-X66/-X66LF/-X66HLF									ALL POS.		
87180-X64/-X64LF/-X64HLF	6	5.08	6.35	10.16	13.20	4.06	6.60	9.90	2,3,4,5	BLACK	FIGURE 1
87180-X64A/-X64ALF/-X64AHLF									1,2,5,6		
87180-X62/-X62LF/-X62HLF									3,4		
87180-X88/-X88LF/-X88HLF	8	7.11	8.89	11.43	15.24	4.06	6.30	11.94	ALL POS.	BLACK	FIGURE 2
87180-X88E/-X88ELF									ALL POS.		
87180-X86/-X86LF/-X86HLF									2,3,4,5,6,7		
87180-X84/-X84LF/-X84HLF									3,4,5,6		
87180-X84A/-X84ALF/-X84AHLF									1,4,5,8		
87180-X84B/-X84BLF/-X84BHLF									1,2,3,6		
87180-X84C/-X84CLF/-X84CHLF									1,2,7,8		
87180-X88G/-X88GLF									ALL POS.		
87180-X84GSLF/-X841GSHLF	3,4,5,6	GREY									

OBSOLETE (A)

PLATING CODE X	PLATING
0	5u" Au + high performance lubricant
1	15 u" G.X.T.
2	20u" GFPD
3	5u" Au + high performance lubricant
4	15 u" G.X.T.
5	50u" G.X.T.
6	6 u" G.X.T.
7	2u" G.X.T.

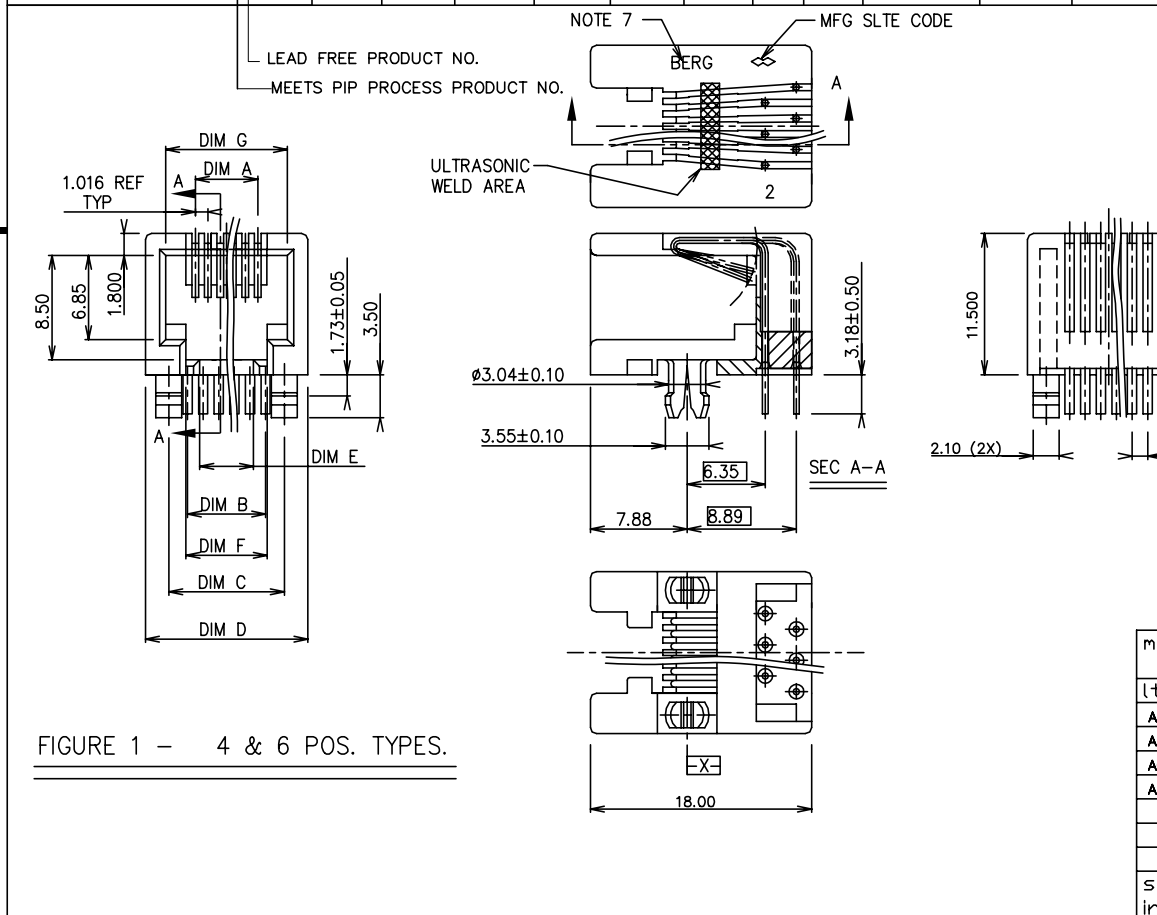


FIGURE 1 - 4 & 6 POS. TYPES.

mat'l. code		surface		tolerance		projection		product family	
		ISO1302		ISO1101 ISO406		mm		MOD JACK	
ltr ecn nodr		date		tolerances unless other		wiserspecified		title	
AA	N06-0043	DT	02/20/06	0.X±0.3		mm		LOW PROFILE PCB III HORZ	
AB	N08-0097	SH	08/13/08	0.XX±0.15				MOD JACK, FOR 1.6MM P.C.B.	
AC	N08-0170	SH	09/25/08	0.XXX±0.05		scale 2.0			
AD	ELX-N-01067	SH	MMO 3/14/12	dr	KCHOU	10/19/93			
				engr	TONY CHIEN	10/19/93			
				chr	TONY CHIEN	10/19/93			
				appd	JENN TSAO	10/19/93			
sheet	revisior	AD	AD						
index	sheet	1	2						

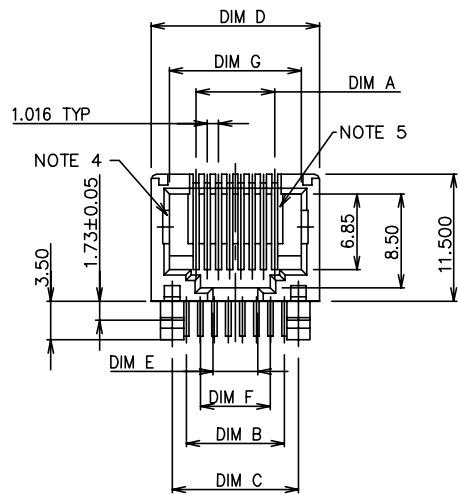
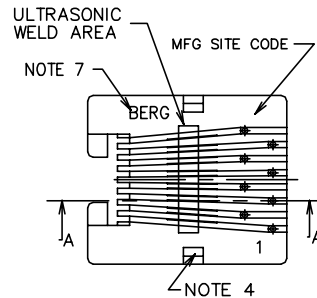
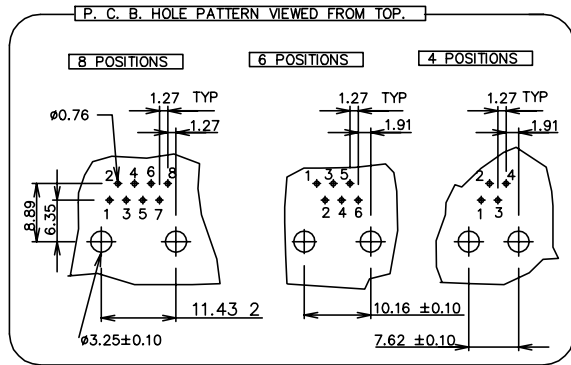
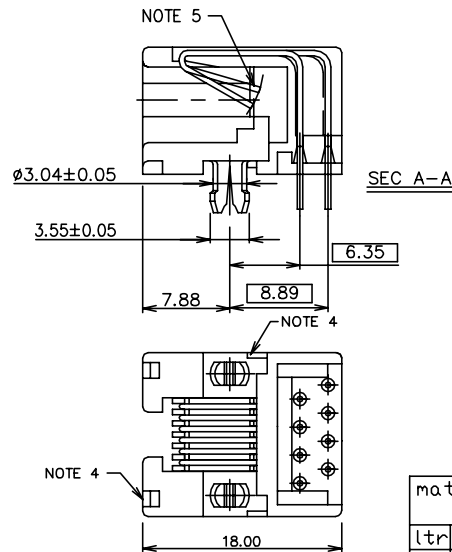


FIGURE 2- 8 POS TYPE.



NOTES:

1. RECOMMENDED P.C.B THICKNESS 1.60 MM
2. HOUSING MAT'L: NYLON 6/6, 25% GLASS REINFORCED, UL94-V0, COLOR : SEE TABLE.
3. CONTACTS: PHOS BRONZE ALLOY UNS-C51000, 0.460DIA. ROUND WIRE. PLATING SEE TABLE.
- ④ APPEARS ON 8 POS TYPE (P/N 87180-X8X) ONLY.
- ⑤ PROTRUDED SHELF ONLY APPEARS ON 8-POS JACK.
6. STANDARD PACKAGING METHOD(USE TUBE): SEE GES-14-361.
- ⑦ COMPANY LOGO CAN BE "BERG" OR "DU PONT", AND WOULD APPEAR IN THE SAME SHIPMENT UNLESS LOGO SPEC HEREIN IS UPDATED.
8. THE PRODUCT MEETS EUROPEAN UNION DIRECTIVES AND OTHER COUNTRY REGULATIONS AS DESCRIBED IN GS-22-008.
9. THE HOUSING WILL WITHSTAND EXPOSURE TO 260°C PEAK TEMPERATURE FOR 10 SECONDS IN A WAVE SOLDER APPLICATION WITH A 1.60mm MINIMUM THICK CIRCUIT BOARD.
10. IF LF P/N PACKAGING MEETS GS-14-920 SPECIFICATION.
- ⑪ EQUIVALENT THICKNESS Au AND GXT PLATING HAVE SAME FUNCTION AND THEY ARE ALTERNATIVE BY THE CUSTOEMR .

mat'l. code		surface ISO1302 ✓		tolerance ISO101 ISO406		projection mm		product family MOD JACK	
ltr	ecnr	noadr	date	tolerances unless otherwise specified		title		LOW PROFILE PCB III HORZ	
AA	N06-0043	DT	02/20/06	angle	0.X±0.3	mm		MOD JACK, FOR 1.6MM P.C.B.	
AB	N08-0097	SH	08/13/08	0°±2'	0.XX±0.15	scale 2.0		dwg no	
AC	N08-0170	SH	09/25/08		0.XXX±0.05			sheet 2 of 2	
AD	ELX-N-01067	SH	MMO 3/14/12	dr	KCHOU 10/19/93	FCI		size	
				enr	TONY CHIEN 10/19/93			87180	
				chr	TONY CHIEN 10/19/93			A4	
				app	JENN TSAO 10/19/93			type Product Customer Drawing	
sheet index	revision sheet								