



Mounting

Cable fixture

TOROIDAL FERRITE CLAMP / GTFC

Toroidal design that makes cable easy to turn around it

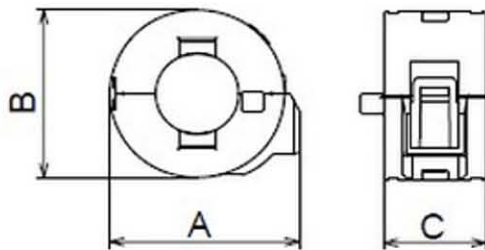
Feature

- Split ferrite core with plastic housing, for easy fixing on assembled cables or cables with connectors.
- Cable tie can assist to hold electric wires and enables the product to be fixed to wire harness (excluding GTFC-41-27-16).
- Wire guiding system prevents wires from being pinched when winding assembly.
- GTFCK series, which are provided with mounting fixtures, can be assembled on chassis by using a screw.

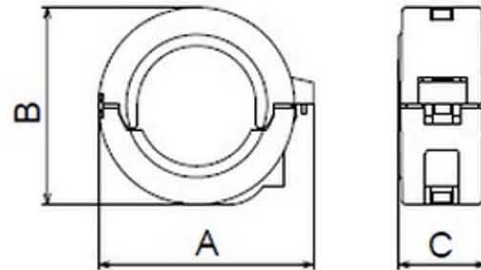
Material

- Ferrite Core: Soft ferrite
- Housing: PA66 (Color: Light gray / Flammability: UL94V-0)

Profile (1)



Profile (2) (GTFC-41-27-16)



Unit: mm

Part No.	Profile	Dimension A	Dimension B	Dimension C	Max. cable diameter	Impedance $\Omega/100\text{MHz}$ (1 turn)	Qty/Box(pcs.)
GTFC-16-8-13	(1)	22.3	20.1	18.9	ϕ 7.2	≥ 45	500
GTFC-16-8-16	(1)	22.3	20.1	21.9	ϕ 7.2	≥ 65	500
GTFC-20-10-10	(1)	27.1	24.9	16.0	ϕ 8.5	≥ 40	400
GTFC-23-11-14	(1)	30.5	28.3	20.2	ϕ 10.5	≥ 55	320
GTFC-25-15-12	(1)	31.1	28.9	17.8	ϕ 13.0	≥ 40	400
GTFC-28-16-13	(1)	35.1	32.9	18.8	ϕ 14.7	≥ 50	270
GTFC-28-16-20	(1)	35.1	32.9	25.8	ϕ 14.7	≥ 70	150
GTFC-41-27-16	(2)	48.2	44.5	19.6	ϕ 26.0	≥ 50	120

