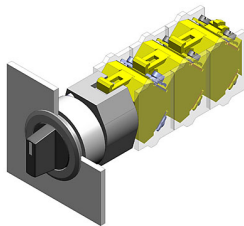


# EAO – Your Expert Partner for Human Machine Interfaces

## 704.411.018 - Selector switch actuator 2 positions, short lever

### 704.411.018 - Selector switch actuator 2 positions, short lever



*Attention: The preview is based on a sample product. This can differ from your current configuration.*

#### Mounting

Mounting cut-out Ø 30,5 mm  
Design flush

#### Front

Front dimension Ø 35 mm  
Front shape round  
Front bezel colour natural anodized  
Front bezel material Aluminium

#### Other Attributes

Weight 0,056 kg

#### Operating-/Indication part

Lever material Plastic  
Lever colour black  
Switching angle  
Lever illumination non-illuminative  
Lever shape short

#### IP-Rating

Front protection IP65

#### Actuator

Switching action

#### Switching element

Rotary positions 2  
max. number of switching elements 3

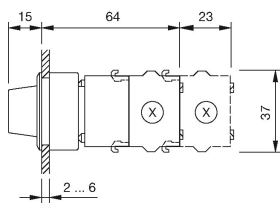
#### Function

Selector switch

# EAO – Your Expert Partner for Human Machine Interfaces

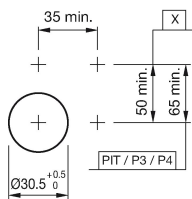
704.411.018 - Selector switch actuator 2 positions, short lever

## Dimensions



X = Screw terminal

## Mounting cut-outs

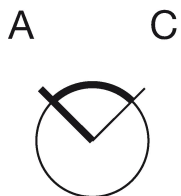


PIT = Push-in terminal

## Wiring diagram



## Switching positions



## Additional information

Max. 3 switching elements can be clipped on  
The colour of anodized aluminium parts can vary due to technical production reasons

## Legend

Switching action: A = Rest, C = Maintained