

Drawer cabinets

Stationary

LISTA
making workspace work

Application:

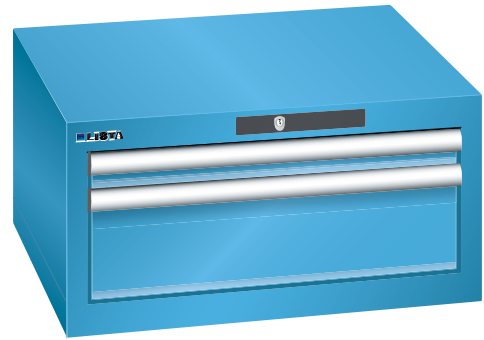
For day-to-day heavy-duty use in workshops

Execution:

- All drawers with full extension
- Individual drawer lock as standard feature to prevent the cabinet from tipping over
- Perforated, slotted drawers provide a secure hold
- Very robust construction for a wide variety of applications and very demanding requirements

Advantage:

- Optimum wall height to keep items from falling out and getting lost
- Folding handle strips for simple, clean and protected labelling
- High quality - made in Germany and Swiss-made
- Runs perfectly smoothly and easily due to the lack of crossbars on the differential extension slide
- Full extension - clear overview and optimal access



Art. no.	50300 232
Brand	LISTA
Manufacturer Part Number	70.774.010
Number of drawers	2 PCS
Height	283 mm
Width	564 mm
Depth	572 mm
Height x width x depth	283 x 564 x 572 mm
Drawer width (inner dimension) x drawer depth (inner dimension)	450 x 450 mm
Load-carrying capacity per drawer	75 kg
Drawer lock	Standard
Drawer front height	1 x 50 mm, 1 x 150 mm
Cabinet colour	Light blue RAL 5012
Colour of front	Light blue RAL 5012
Opening/closing system	Auto Lock
Clear height	200 mm
LISTA unit	27 x 27 E
Gross Weight	43.000 kg
Product Group	5AN