

PRODUCT SHORT DESCRIPTION:

Popular aluminum framed cork board

FEATURES AND BENEFITS:

- Essential Topaz:
 - Good value for money solution
- Essential Sapphire:
 - Good value for money, ideal for all audiovisual and educational use
- Self-healing thick resilient natural cork surface
- For use with push pins
- Classic anodized aluminium frame
- Concealed wall fixings through plastic corners
- Wall fastening kit included

PRODUCT IMAGE:



MARKETING COPY:

Simple and straightforward, the products in this line are the most versatile notice boards in the market. Sober and well-designed, they come in a wide range of solutions and combinations. Maya Series Notice Boards are extremely adaptable, durable and efficient. Our combination boards can be used as notice or presentation boards with equal efficiency.

APPLICATION AND SALES PROPOSITION:

- Good value for money solution
- Natural and recyclable cork surface

TARGET MARKET:

CHANNEL: Office products wholesalers, office products stores, other retailers and building contractors

END USERS: conference centers, hotels, public buildings, public store buildings and private and public buildings in general

ADDITIONAL NOTES:

Other information supports: our official websites, Youtube®, Facebook®, catalogue and online catalogue, demo videos and more.

PROMOTIONAL TIPS:

No specific timing, thus we recommend the occasional promotion like offering of accessories or 2 for the price of 1.

RANGING TABLE:

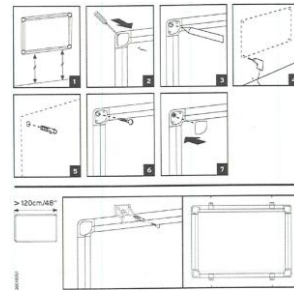
| Frame/Colour: | Surface/Colour: | Product Size: | Packed mm | N.W. kg | G.W. kg | Reference: | RRP: |
|----------------------------------|-----------------|---------------|--------------|---------|---------|------------|------|
| ESSENTIAL TOPAZ SERIES | | | | | | | |
| Grey anodized aluminium | Cork | 600x450 | 720x470x22 | 1,08 | 1,633 | CA0216170 | --- |
| Grey anodized aluminium | Cork | 900x600 | 1030x620x25 | 2,16 | 3 | CA0316170 | --- |
| Grey anodized aluminium | Cork | 1200x900 | 1330x920x25 | 4,32 | 5,83 | CA0516170 | --- |
| Grey anodized aluminium | Cork | 1200x900 | 1650x1050x25 | 6 | 8,48 | CA1516170 | --- |
| ESSENTIAL SAPPHIRE SERIES | | | | | | | |
| Grey anodized aluminium | Cork | 600x450 | 720x470x22 | 1,12 | 1,40 | CA021170 | --- |
| Grey anodized aluminium | Cork | 900x600 | 1030x620x25 | 2,06 | 2,77 | CA031170 | --- |
| Grey anodized aluminium | Cork | 1200x900 | 1330x920x25 | 3,60 | 5,40 | CA051170 | --- |
| Grey anodized aluminium | Cork | 1200x1200 | 133x126x25 | 5,03 | 7,49 | CA381170 | --- |

RANGING TABLE:

| Frame/Colour: | Surface/Colour: | Product Size: | Packed mm | N.W. kg | G.W. kg | Reference: | RRP: |
|-------------------------|-----------------|---------------|--------------|---------|---------|------------|------|
| Grey anodized aluminium | Cork | 1500x1000 | 1650x1050x25 | 5,24 | 7,72 | CA151170 | --- |
| Grey anodized aluminium | Cork | 1500x1200 | 1650x1260x25 | 6,19 | 9,17 | CA121170 | --- |
| Grey anodized aluminium | Cork | 1800x900 | 2000x940x25 | 5,65 | 8,28 | CA071170 | --- |
| Grey anodized aluminium | Cork | 1800x1200 | 2000x1260x25 | 7,36 | 10,85 | CA271170 | --- |
| Grey anodized aluminium | Cork | 2000x1000 | 2200x1050x25 | 6,88 | 10,08 | CA221170 | --- |
| Grey anodized aluminium | Cork | 2000x1200 | 2200x1260x25 | 7,50 | 10,60 | CA281170 | --- |
| Grey anodized aluminium | Cork | 2400x1200 | 2590x1260x25 | 9,70 | 14,21 | CA211170 | --- |

TECHNICAL DETAILS**COMPOSITION:**

- Aluminium frame
- Cork surface

ASSEMBLY OVERVIEW:**CERTIFICATION AND LEGISLATION:**

n/a

ILLUSTRATION:

n/a

SUGGESTED ADVERT:**Maya Cork Board - Essential Series****Popular aluminum framed cork board**

- Essential Topaz:
 - Good value for money solution
- Essential Sapphire:
 - Good value for money, ideal for all audiovisual and educational use
- Self-healing thick resilient natural cork surface
- For use with push pins
- Classic anodized aluminium frame
- Concealed wall fixings through plastic corners
- Wall fastening kit included

**WITHIN FAMILY:**

- Maya Felt Board
- Maya Combo Board
- Maya Combination Board
- Maya Combonet Board
- New Generation Cork Board
- New Generation Combo Board
- New Generation Combonet Board
- Eclipse Felt Board
- Unframed Felt Board
- Provision Techcork Board
- Provision Fabric Board
- Provision Felt Board
- Provision Softouch
- Mastervision Softouch Board
- Mastervision Techcork Board

QR CODE:

Author: Catarina Veiga

Approval: Revision: 02
Date: 14-03-2017