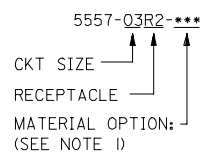


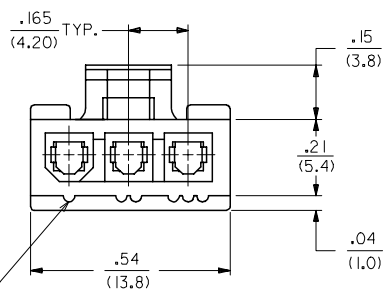
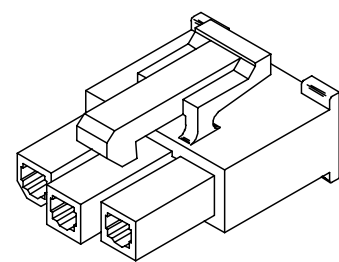
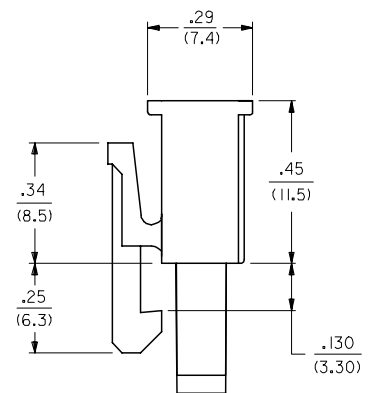
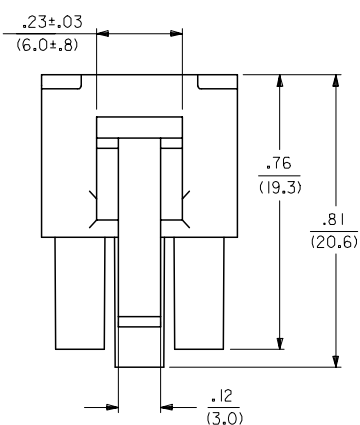
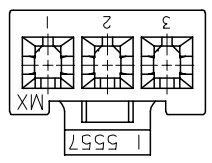
PART NO	ENG NO	CKT SIZE	MATERIAL SEE NOTE 1
39-01-4030	5557-03R2	3	94V-2
39-01-4031	5557-03R2-210	3	94V-0
39-01-5039	5557-03R2-BL	3	94V-2 BLACK

**LEGEND**



**NOTES:**

- MATERIAL:  
 "BLANK" = NYLON 6/6, 94V-2, COLOR: NATURAL.  
 "210" = NYLON 6/6, 94V-0, COLOR: NATURAL.  
 "BL" = NYLON 6/6, 94V-2, COLOR: BLACK.
- PART TO BE USED WITH MOLEX FEMALE TERMINAL #5556.
- PART MATES WITH MOLEX RIGHT ANGLE HEADER #5569-03A\*, VERTICAL HEADER #5566-03A3\* AND PLUG #5559-03P\*.
- WHEN MATING WITH ANOTHER CONNECTOR, THE CENTER CIRCUIT WILL "MAKE FIRST AND BREAK LAST".
- PART IS NOT DESIGNED FOR CURRENT SHARING.
- PRODUCT SPECIFICATION: PS-5556-001
- CONNECTOR ASSEMBLIES ARE NOT TO BE MATED OR UNMATED WHILE CIRCUITS ARE LIVE.
- WIRES ARE TO BE DRESSED IN SUCH A MANNER TO ALLOW THE TERMINALS TO FLOAT FREELY IN THE POCKET.



RIB INDICATES CIRCUIT #1

<b>ADDED NOTES</b> EC NO: UCP2006-2246 DRAWN: ADRIANOL 2006/03/23 CHKD: GPOLGAR 2006/03/23 APPR: ICOMERCJ 2006/03/24	<b>QUALITY SYMBOLS</b> ▽=0 ▽=0	<b>GENERAL TOLERANCES (UNLESS SPECIFIED)</b>		<b>DIMENSION STYLE</b> IN/MM		SCALE 4:1	DESIGN UNITS METRIC	THIRD ANGLE PROJECTION		
		4 PLACES ± .010	± .010	DRAWN BY	DATE	3 CIRCUIT RECEPTACLE, (MINI-FIT JR.) (MAKE-FIRST/BREAK-LAST)				
		3 PLACES ± .015	± .015	GEP	10/02/90					
		2 PLACES ± 0.25	± .015	RJF	10/02/90	MOLEX INCORPORATED				
1 PLACE ± 0.38	± .015	RAS	10/02/90							
ANGULAR ±1/2°		MATERIAL NO.		DOCUMENT NO.		SHEET NO.				
DRAFT WHERE APPLICABLE MUST REMAIN WITHIN DIMENSIONS		SEE CHART		SD-5557-03R2*		1 OF 1				
THIS DRAWING CONTAINS INFORMATION THAT IS PROPRIETARY TO MOLEX INCORPORATED AND SHOULD NOT BE USED WITHOUT WRITTEN PERMISSION										