

OVERLOAD RELAY 12,5...50 A FOR MOTOR PROTECTION SIZE S3, CLASS 20E STAND-ALONE INSTALLATION MAIN CIRCUIT: STR.-THR. TRANSF. AUX. CIRCUIT: SPRING-T. TERM. MANUAL-AUTOMATIC RESET



Figure similar

Product brand name	SIRIUS
Product designation	solid-state overload relay
Product type designation	3RB3

General technical data	
Size of overload relay	S3
Size of contactor can be combined company-specific	S3
Power loss [W] total typical	0.2 W
Insulation voltage with degree of pollution 3 rated value	1 000 V
Surge voltage resistance rated value	8 kV
maximum permissible voltage for safe isolation	
<ul style="list-style-type: none"> <li>in networks with grounded star point between auxiliary and auxiliary circuit</li> </ul>	300 V
<ul style="list-style-type: none"> <li>in networks with grounded star point between auxiliary and auxiliary circuit</li> </ul>	300 V
<ul style="list-style-type: none"> <li>in networks with grounded star point between main and auxiliary circuit</li> </ul>	600 V

<ul style="list-style-type: none"> <li>in networks with grounded star point between main and auxiliary circuit</li> </ul>	690 V
<b>Protection class IP</b>	
<ul style="list-style-type: none"> <li>on the front</li> </ul>	IP20
<ul style="list-style-type: none"> <li>of the terminal</li> </ul>	IP20
<b>Shock resistance</b>	8g / 11 ms
<ul style="list-style-type: none"> <li>acc. to IEC 60068-2-27</li> </ul>	15g / 11 ms
<b>Vibration resistance</b>	1-6 Hz, 15 mm; 6-500 Hz, 20 m/s <sup>2</sup> ; 10 cycles
<b>Thermal current</b>	50 A
<b>Recovery time</b>	
<ul style="list-style-type: none"> <li>after overload trip with automatic reset typical</li> </ul>	3 min
<ul style="list-style-type: none"> <li>after overload trip with remote-reset</li> </ul>	0 min
<ul style="list-style-type: none"> <li>after overload trip with manual reset</li> </ul>	0 min
<b>Type of protection</b>	II (2) G [Ex e] [Ex d] [Ex px] II (2) D [Ex t] [Ex p]
Certificate of suitability relating to ATEX	PTB 09 ATEX 3001
<b>Protection against electrical shock</b>	finger-safe
Equipment marking acc. to DIN EN 81346-2	F

#### Ambient conditions

<b>Installation altitude at height above sea level</b>	
<ul style="list-style-type: none"> <li>maximum</li> </ul>	2 000 m
<b>Ambient temperature</b>	
<ul style="list-style-type: none"> <li>during operation</li> </ul>	-25 ... +60 °C
<ul style="list-style-type: none"> <li>during storage</li> </ul>	-40 ... +80 °C
<ul style="list-style-type: none"> <li>during transport</li> </ul>	-40 ... +80 °C
<b>Temperature compensation</b>	60 ... -25 °C
Relative humidity during operation	10 ... 95 %

#### Main circuit

<b>Number of poles for main current circuit</b>	3
<b>Adjustable pick-up value current of the current-dependent overload release</b>	12.5 ... 50 A
<b>Operating voltage</b>	
<ul style="list-style-type: none"> <li>rated value</li> </ul>	1 000 V
<ul style="list-style-type: none"> <li>at AC-3 rated value maximum</li> </ul>	1 000 V
<b>Operating frequency rated value</b>	50 ... 60 Hz
<b>Operating current rated value</b>	50 A
<b>Operating power for three-phase motors at 400 V at 50 Hz</b>	7.5 ... 22 kW

#### Auxiliary circuit

<b>Design of the auxiliary switch</b>	integrated
<b>Number of NC contacts</b>	
<ul style="list-style-type: none"> <li>for auxiliary contacts</li> </ul>	1
— Note	for contactor disconnection

<b>Number of NO contacts</b>	
<ul style="list-style-type: none"> <li>• for auxiliary contacts</li> </ul>	1
— Note	for message "tripped"
<b>Number of CO contacts</b>	
<ul style="list-style-type: none"> <li>• for auxiliary contacts</li> </ul>	0
<b>Operating current of auxiliary contacts at AC-15</b>	
<ul style="list-style-type: none"> <li>• at 24 V</li> </ul>	4 A
<ul style="list-style-type: none"> <li>• at 110 V</li> </ul>	4 A
<ul style="list-style-type: none"> <li>• at 120 V</li> </ul>	4 A
<ul style="list-style-type: none"> <li>• at 125 V</li> </ul>	4 A
<ul style="list-style-type: none"> <li>• at 230 V</li> </ul>	3 A
<b>Operating current of auxiliary contacts at DC-13</b>	
<ul style="list-style-type: none"> <li>• at 24 V</li> </ul>	2 A
<ul style="list-style-type: none"> <li>• at 60 V</li> </ul>	0.55 A
<ul style="list-style-type: none"> <li>• at 110 V</li> </ul>	0.3 A
<ul style="list-style-type: none"> <li>• at 125 V</li> </ul>	0.3 A
<ul style="list-style-type: none"> <li>• at 220 V</li> </ul>	0.11 A

### Protective and monitoring functions

<b>Trip class</b>	CLASS 20E
<b>Design of the overload release</b>	electronic

### UL/CSA ratings

<b>Full-load current (FLA) for three-phase AC motor</b>	
<ul style="list-style-type: none"> <li>• at 480 V rated value</li> </ul>	50 A
<ul style="list-style-type: none"> <li>• at 600 V rated value</li> </ul>	50 A
<b>Contact rating of auxiliary contacts according to UL</b>	B600 / R300

### Short-circuit protection

<b>Design of the fuse link</b>	
<ul style="list-style-type: none"> <li>• for short-circuit protection of the main circuit</li> </ul>	
— with type of coordination 1 required	gG: 200 A
— with type of assignment 2 required	gG: 200 A
<ul style="list-style-type: none"> <li>• for short-circuit protection of the auxiliary switch required</li> </ul>	fuse gG: 6 A

### Installation/ mounting/ dimensions

<b>Mounting position</b>	any
<b>Mounting type</b>	stand-alone installation
<b>Height</b>	106 mm
<b>Width</b>	70 mm
<b>Depth</b>	124 mm
<b>Required spacing</b>	
<ul style="list-style-type: none"> <li>• with side-by-side mounting</li> </ul>	
— forwards	0 mm

— Backwards	0 mm
— upwards	0 mm
— downwards	0 mm
— at the side	0 mm
• for grounded parts	
— forwards	0 mm
— Backwards	0 mm
— upwards	0 mm
— at the side	6 mm
— downwards	0 mm
• for live parts	
— forwards	0 mm
— Backwards	0 mm
— upwards	0 mm
— downwards	0 mm
— at the side	6 mm

### Connections/Terminals

<b>Product function</b>	
• removable terminal for auxiliary and control circuit	Yes
<b>Type of electrical connection</b>	
• for main current circuit	straight-through transformers
• for auxiliary and control current circuit	spring-loaded terminals
<b>Arrangement of electrical connectors for main current circuit</b>	Top and bottom
<b>Type of connectable conductor cross-sections</b>	
• for auxiliary contacts	
— solid	2x (0.25 ... 1.5 mm <sup>2</sup> )
— single or multi-stranded	2x (0,25 ... 1,5 mm <sup>2</sup> )
— finely stranded with core end processing	2x (0.25 ... 1.5 mm <sup>2</sup> )
— finely stranded without core end processing	2x (0.25 ... 1.5 mm <sup>2</sup> )
• at AWG conductors for auxiliary contacts	2x (24 ... 16)
<b>Design of screwdriver shaft</b>	Diameter 5 to 6 mm
<b>Size of the screwdriver tip</b>	Pozidriv PZ 2

### Communication/ Protocol

<b>Type of voltage supply via input/output link master</b>	No
--	----

### Electromagnetic compatibility

<b>Conducted interference</b>	
• due to burst acc. to IEC 61000-4-4	2 kV (power ports), 1 kV (signal ports) corresponds to degree of severity 3

- due to conductor-earth surge acc. to IEC 61000-4-5
- due to conductor-conductor surge acc. to IEC 61000-4-5
- due to high-frequency radiation acc. to IEC 61000-4-6

2 kV (line to earth) corresponds to degree of severity 3

1 kV (line to line) corresponds to degree of severity 3

10 V in frequency range 0.15 to 80 MHz, modulation 80 % AM with 1 kHz

**Field-bound parasitic coupling acc. to IEC 61000-4-3**

10 V/m

**Electrostatic discharge acc. to IEC 61000-4-2**

6 kV contact discharge / 8 kV air discharge






## Display

### Display version

- for switching status

Slide switch

## Certificates/approvals

General Product Approval	For use in hazardous locations	Declaration of Conformity	Test Certificates
 CSA	 UL		 ATEX
 EG-Konf.			<a href="#">Type Test Certificates/Test Report</a>

## Marine / Shipping

## other



[Confirmation](#)

## Further information

### Information- and Downloadcenter (Catalogs, Brochures,...)

<http://www.siemens.com/industrial-controls/catalogs>

### Industry Mall (Online ordering system)

<https://mall.industry.siemens.com/mall/en/en/Catalog/product?mlfb=3RB3046-2UX1>

### Cax online generator

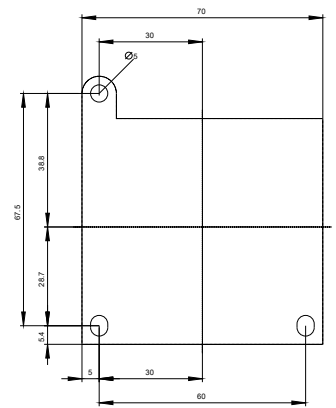
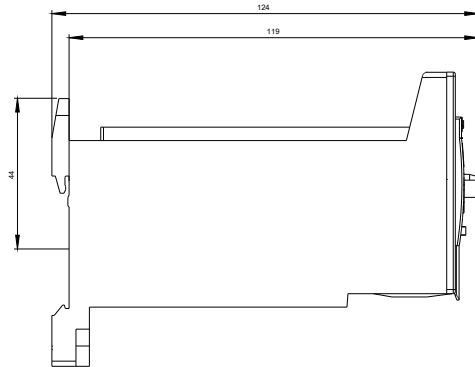
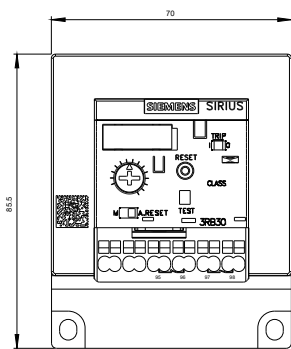
<http://support.automation.siemens.com/WW/CAXorder/default.aspx?lang=en&mlfb=3RB3046-2UX1>

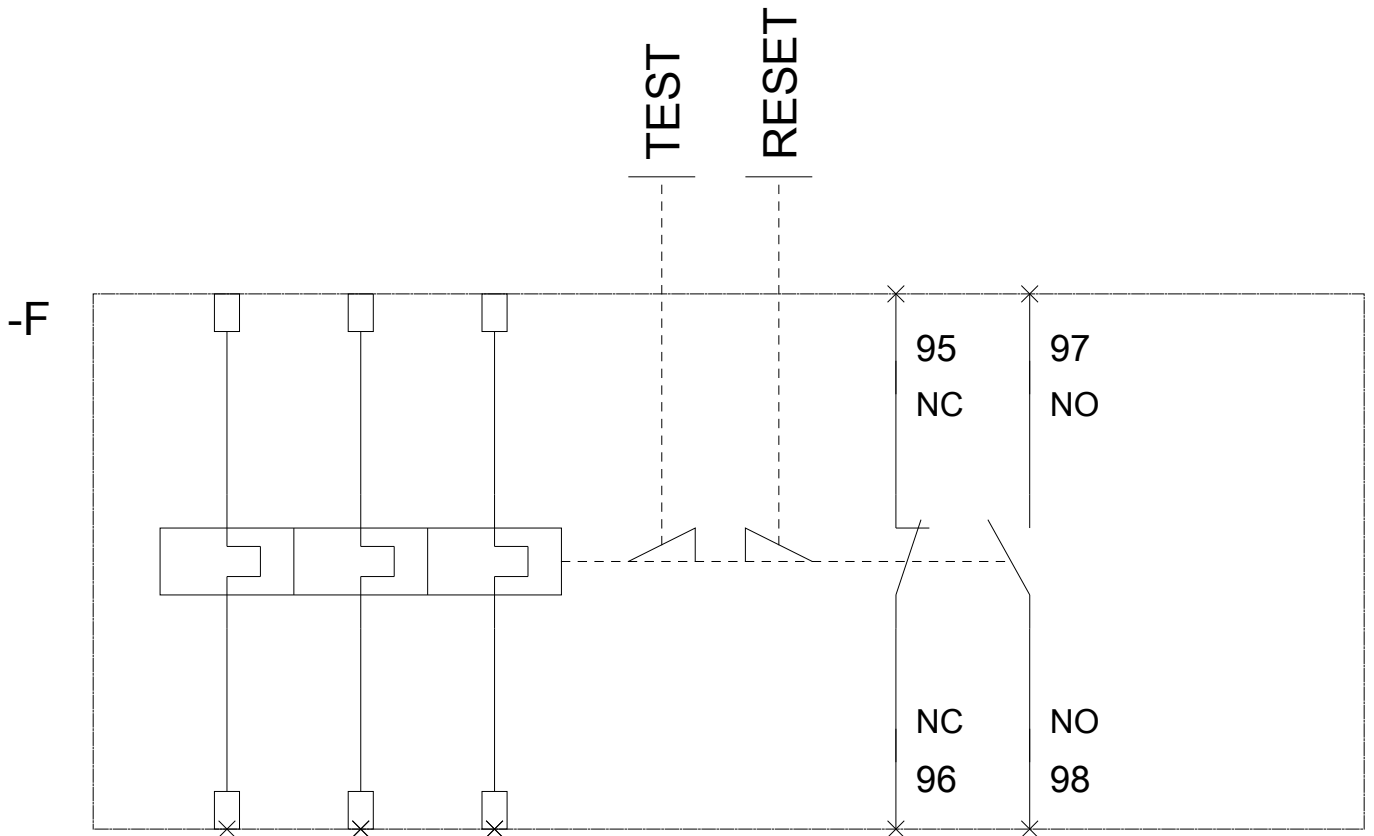
### Service&Support (Manuals, Certificates, Characteristics, FAQs,...)

<https://support.industry.siemens.com/cs/ww/en/ps/3RB3046-2UX1>

### Image database (product images, 2D dimension drawings, 3D models, device circuit diagrams, EPLAN macros, ...)

[http://www.automation.siemens.com/bilddb/cax\\_de.aspx?mlfb=3RB3046-2UX1&lang=en](http://www.automation.siemens.com/bilddb/cax_de.aspx?mlfb=3RB3046-2UX1&lang=en)





last modified:

10/13/2017