





# CONTENTS

## MOUNTING & STEELWORK

- 1.01 Eco Cross Over Plate
- 1.03 Universal Cross Over Plate
- 1.03 Standard Cross Over Plate
- 1.03 Universal Corner Bracket
- 1.04 Tube Coupler
- 1.04 Coupler Reducer
- 1.04 Aerial Parallel Clamp
- 1.05 Chimney Lashing Bracket
- 1.05 Parallel Stand Off Bracket
- 1.05 Channel Wall Bracket
- 1.06 Wall Bracket
- 1.06 90° Mounting Bracket
- 1.07 Straight Stand Off Bracket
- 1.07 Parallel Stand Off Pole
- 1.07 Wall Mounting Pole
- 1.08 Antenna Pole
- 1.09 Feeder Bracket
- 1.09 45° Angle Stand Off Bracket
- 1.10 Single Mounting Dish Bracket
- 1.10 Aerial Tilt Bracket
- 1.10 Single Fixing Universal Mount
- 1.11 Universal Vertical Stand Off Assembly
- 1.11 Antenna Support Mount
- 1.12 Single Leg Fixing Swinging Arm
- 1.12 Double Antenna Mount
- 1.12 Double Standoff Assembly
- 1.13 Antenna Leg Mount
- 1.13 Antenna Face Mount
- 1.14 Mini Mount Frame
- 1.14 Roof Mount Frame
- 1.14 Pole Mount
- 1.15 400s Tower
- 1.16 Windsock Pole Mast

## CABLE & FEEDER FIXING SYSTEMS

- 3.01 Heavy Duty Cable Tray
- 3.01 Flat Bends & Risers
- 3.02 Cable Tray Equal Tee
- 3.02 Top Hat Bracket
- 3.02 Vertical Cable Tray Mounting Bracket
- 3.03 Heavy Duty Cable Ladder
- 3.04 Cable Support System
- 3.04 Single Vertical Support Kit
- 3.04 Single Horizontal Support Kit
- 3.05 Double Vertical Support Kit
- 3.05 Double Horizontal Support Kit
- 3.05 Leg Fixing Bracket
- 3.05 Horizontal Wall Fixing Kit
- 3.06 Horizontal End Wall Fixing Bracket
- 3.06 Vertical Wall Fixing Bracket
- 3.06 Pack Plates
- 3.07 Cable Straps Single Part
- 3.07 Cable Ties
- 3.08 Feeder Clamps
- 3.08 Cable Support Saddle
- 3.09 Cable Guard
- 3.09 Channel Support System
- 3.10 Hose Clips

## FASTENERS

- 2.01 U Bolts
- 2.04 N Bolts
- 2.06 V Bolts
- 2.06 Square U Bolts
- 2.07 Rectangular U Bolts
- 2.07 Hook Bolts
- 2.08 Bespoke Fasteners
- 2.09 Galvanized Bolts & Nuts
- 2.10 Dome Head Bolts
- 2.10 Standard Studding
- 2.11 Galvanized Fasteners
- 2.12 Stainless Steel Fasteners & Nylon Fibre Washers
- 2.13 Stainless Steel Set Bolts
- 2.13 Stainless Steel Studs
- 2.14 Chemical Anchors Bolts
- 2.14 Resin Anchor Cartridge
- 2.15 Through Bolts
- 2.15 Masonry Anchor Bolts

## CLIMBING & SAFETY

- 4.01 Climbing Ladders
- 4.01 Climbing Rungs
- 4.02 Railok © Fall Arrest System
- 4.02 Anti-Climbing Equipment
- 4.04 Tube Clamp Handrails
- 4.04 Pipe Clamps
- 4.04 Free Standing Handrail System



## EARTHING EQUIPMENT

- 5.01 Earth Conductors
- 5.02 Clamps & Fixings
- 5.03 Lightning Protection

## GUY HARDWARE

- 6.01 Wire & Fibre Ropes
- 6.01 Parafil
- 6.01 Turnbuckles
- 6.02 Long Link Chain
- 6.02 'D' Shackles
- 6.02 Bow Shackles
- 6.03 Thimbles
- 6.03 Galvanized Commercial Wire Rope Grip

## ANCHORS

- 7.01 Delta Anchor
- 7.01 Screw Type Ground Anchor
- 7.01 T Ground Anchor

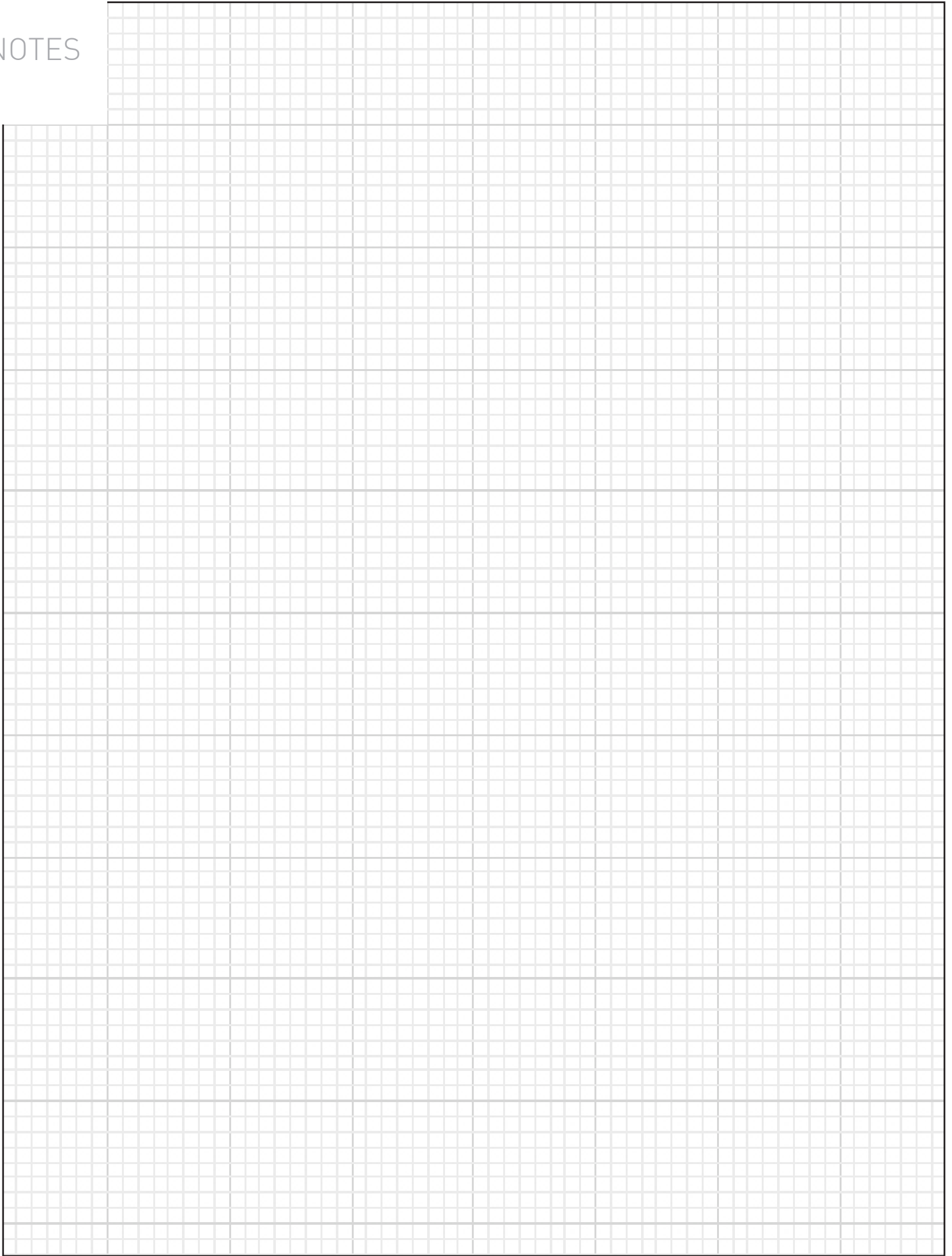
## TOOLS & HARDWARE

- 8.01 Paints & Tapes
- 8.01 Tube Caps
- 8.02 Thread Caps
- 8.02 Tools & Consumables
- 8.03 Cable Drum Rollers
- 8.03 Pipe Flashing
- 8.03 Screws

## ADDITIONAL SERVICES

- 9.01 Lighting & Power
- 9.03 Series Chart
- 9.04 Conditions Of Sale

NOTES



## MOUNTING & STEELWORK

- 1.01 Eco Cross Over Plate
- 1.03 Universal Cross Over Plate
- 1.03 Standard Cross Over Plate
- 1.03 Universal Corner Bracket
- 1.04 Tube Coupler
- 1.04 Coupler Reducer
- 1.04 Aerial Parallel Clamp
- 1.05 Chimney Lashing Bracket
- 1.05 Parallel Stand Off Bracket
- 1.05 Channel Wall Bracket
- 1.06 Wall Bracket
- 1.06 90° Mounting Bracket
- 1.07 Straight Stand Off Bracket
- 1.07 Parallel Stand Off Pole
- 1.07 Wall Mounting Pole
- 1.08 Antenna Pole
- 1.09 Feeder Bracket
- 1.09 45° Angle Stand Off Bracket
- 1.10 Single Mounting Dish Bracket
- 1.10 Aerial Tilt Bracket
- 1.10 Single Fixing Universal Mount
- 1.11 Universal Vertical Stand Off Assembly
- 1.11 Antenna Support Mount
- 1.12 Single Leg Fixing Swinging Arm
- 1.12 Double Antenna Mount
- 1.12 Double Standoff Assembly
- 1.13 Antenna Leg Mount
- 1.13 Antenna Face Mount
- 1.14 Mini Mount Frame
- 1.14 Roof Mount Frame
- 1.14 Pole Mount
- 1.15 400s Tower
- 1.16 Windsock Pole Mast

All Kit No. normally prefix 4/ and 5/ pre supplied with Grade 4.6 fixings, i.e U/N Bolts

# ECO CROSS OVER PLATES

## QUICK REFERENCE CHART

Tower Leg	Fixings	48.3	60.3	76.1	88.9	114.3
		2/UB/021	2/UB/022	2/UB/023	2/UB/024	2/UB/025
45 x 45 L	2/NB/021	3/COP/1012	3/COP/1012	3/COP/1034	3/COP/1034	3/COP/1005
50 x 50 L	2/NB/016	3/COP/1012	3/COP/1012	3/COP/1034	3/COP/1034	3/COP/1005
60 x 60 L	2/NB/017	3/COP/1012	3/COP/1012	3/COP/1034	3/COP/1034	3/COP/1005
65 x 65 L	2/NB/015	3/COP/1012	3/COP/1012	3/COP/1034	3/COP/1034	3/COP/1005
70 x 70 L	2/NB/006	3/COP/1012	3/COP/1012	3/COP/1034	3/COP/1034	3/COP/1005
75 x 75 L	2/NB/007	3/COP/2012	3/COP/2012	3/COP/2034	3/COP/2034	3/COP/2005
80 x 80 L	2/NB/008	3/COP/2012	3/COP/2012	3/COP/2034	3/COP/2034	3/COP/2005
85 x 85 L	2/NB/009	3/COP/2012	3/COP/2012	3/COP/2034	3/COP/2034	3/COP/2005
90 x 90 L	2/NB/018	3/COP/2012	3/COP/2012	3/COP/2034	3/COP/2034	3/COP/2005
100 x 100 L	2/NB/010	3/COP/2012	3/COP/2012	3/COP/2034	3/COP/2034	3/COP/2005
120 x 120 L	2/NB/011	3/COP/2012	3/COP/2012	3/COP/2034	3/COP/2034	3/COP/2005
130 x 130 L	2/NB/023	3/COP/2012	3/COP/2012	3/COP/2034	3/COP/2034	3/COP/2005
150 x 150 L	2/NB/012	3/COP/3012	3/COP/3012	3/COP/3034	3/COP/3034	3/COP/3005
160 x 160 L	2/NB/027	3/COP/3012	3/COP/3012	3/COP/3034	3/COP/3034	3/COP/3005
200 x 200 L	2/NB/013	3/COP/4012	3/COP/4012	3/COP/4034	3/COP/4034	3/COP/4005
250 x 250 L	2/NB/028	3/COP/5012	3/COP/5012	3/COP/5034	3/COP/5034	3/COP/5005
50 x 75 L	2/NB/201	3/COP/2012	3/COP/2012	3/COP/2034	3/COP/2034	3/COP/2005
65 x 100 L	2/NB/202	3/COP/2012	3/COP/2012	3/COP/2034	3/COP/2034	3/COP/2005
75 x 50 L	2/NB/101	3/COP/1012	3/COP/1012	3/COP/1034	3/COP/1034	3/COP/1005
75 x 100 L	2/NB/203	3/COP/2012	3/COP/2012	3/COP/2034	3/COP/2034	3/COP/2005
75 x 125 L	2/NB/204	3/COP/2012	3/COP/2012	3/COP/2034	3/COP/2034	3/COP/2005
100 x 65 L	2/NB/102	3/COP/2012	3/COP/2012	3/COP/2034	3/COP/2034	3/COP/2005
100 x 75 L	2/NB/103	3/COP/2012	3/COP/2012	3/COP/2034	3/COP/2034	3/COP/2005
125 x 75 L	2/NB/104	3/COP/3012	3/COP/3012	3/COP/1034	3/COP/1034	3/COP/1005
4 1/2" x 4 1/2" L	2/NB/019	3/COP/4012	3/COP/4012	3/COP/4034	3/COP/4034	3/COP/4005
5" x 5" L	2/NB/020	3/COP/1012	3/COP/1012	3/COP/1034	3/COP/1034	3/COP/1005
6" x 6" L	2/NB/024	3/COP/1012	3/COP/1012	3/COP/1034	3/COP/1034	3/COP/1005
8" x 8" L	2/NB/025	3/COP/1012	3/COP/1012	3/COP/1034	3/COP/1034	3/COP/1005
50 x 50 Box	2/SQB/101	3/COP/2012	3/COP/2012	3/COP/2034	3/COP/2034	3/COP/2005
60 x 60 Box	2/SQB/102	3/COP/2012	3/COP/2012	3/COP/2034	3/COP/2034	3/COP/2005
70 x 70 Box	2/SQB/103	3/COP/2012	3/COP/2012	3/COP/2034	3/COP/2034	3/COP/2005
80 x 80 Box	2/SQB/104	3/COP/2012	3/COP/2012	3/COP/2034	3/COP/2034	3/COP/2005
90 x 90 Box	2/SQB/105	3/COP/3012	3/COP/3012	3/COP/3034	3/COP/3034	3/COP/3005
100 x 100 Box	2/SQB/106	3/COP/2012	3/COP/2012	3/COP/2034	3/COP/2034	3/COP/2005
120 x 120 Box	2/SQB/107	3/COP/2012	3/COP/2012	3/COP/3034	3/COP/3034	3/COP/3005
150 x 150 Box	2/SQB/112	3/COP/3012	3/COP/3012	3/COP/3034	3/COP/3034	3/COP/3005
51 x 102 RSC	2/SQB/111	3/COP/2012	3/COP/2012	3/COP/2034	3/COP/2034	3/COP/2005
64 x 127 RSC	2/SQB/108	3/COP/2012	3/COP/2012	3/COP/2034	3/COP/2034	3/COP/2005
76 x 152 RSC	2/SQB/114	3/COP/3012	3/COP/3012	3/COP/3034	3/COP/3034	3/COP/3005
76 x 203 RSC	2/SQB/116	3/COP/4012	3/COP/4012	3/COP/4034	3/COP/4034	3/COP/4005
102 x 51 RSC	2/SQB/109	3/COP/1012	3/COP/1012	3/COP/1034	3/COP/1034	3/COP/1005
127 x 64 RSC	2/SQB/110	3/COP/1012	3/COP/1012	3/COP/1034	3/COP/1034	3/COP/1005
152 x 76 RSC	2/SQB/113	3/COP/2012	3/COP/2012	3/COP/2034	3/COP/2034	3/COP/2005
203 x 76 RSC	2/SQB/115	3/COP/2012	3/COP/2012	3/COP/2034	3/COP/2034	3/COP/2005

Tower Leg	Fixings	48.3 2/UB/021	60.3 2/UB/022	76.1 2/UB/023	88.9 2/UB/024	114.3 2/UB/025
33.7 Tube	2/UB/019	3/COP/1012	3/COP/1012	3/COP/1034	3/COP/1034	3/COP/1005
42.4 Tube	2/UB/020	3/COP/1012	3/COP/1012	3/COP/1034	3/COP/1034	3/COP/1005
48.3 Tube	2/UB/021	3/COP/1012	3/COP/1012	3/COP/1034	3/COP/1034	3/COP/1005
60.3 Tube	2/UB/022	3/COP/1012	3/COP/1012	3/COP/1034	3/COP/1034	3/COP/1005
76.1 Tube	2/UB/023	3/COP/2012	3/COP/2012	3/COP/2034	3/COP/2034	3/COP/2005
88.9 Tube	2/UB/024	3/COP/2012	3/COP/2012	3/COP/2034	3/COP/2034	3/COP/2005
114.3 Tube	2/UB/025	3/COP/2012	3/COP/2012	3/COP/2034	3/COP/2034	3/COP/2005
139.7 Tube	2/UB/026	3/COP/3012	3/COP/3012	3/COP/3034	3/COP/3034	3/COP/3005
168.3 Tube	2/UB/015	3/COP/3012	3/COP/3012	3/COP/3034	3/COP/3034	3/COP/3005
193.7 Tube	2/UB/027	3/COP/4012	3/COP/4012	3/COP/4034	3/COP/4034	3/COP/4005
219.1 Tube	2/UB/028	3/COP/4012	3/COP/4012	3/COP/4034	3/COP/4034	3/COP/4005
35 Bar	2/UB/038	3/COP/1012	3/COP/1012	3/COP/1034	3/COP/1034	3/COP/1005
40 Bar	2/UB/041	3/COP/1012	3/COP/1012	3/COP/1034	3/COP/1034	3/COP/1005
50 Bar	2/UB/051	3/COP/1012	3/COP/1012	3/COP/1034	3/COP/1034	3/COP/1005
55 Bar	2/UB/050	3/COP/1012	3/COP/1012	3/COP/1034	3/COP/1034	3/COP/1005
65 Bar	2/UB/042	3/COP/1012	3/COP/1012	3/COP/1034	3/COP/1034	3/COP/1005
70 Bar	2/UB/043	3/COP/1012	3/COP/1012	3/COP/1034	3/COP/1034	3/COP/1005
80 Bar	2/UB/048	3/COP/2012	3/COP/2012	3/COP/2034	3/COP/2034	3/COP/2005
95 Bar	2/UB/049	3/COP/2012	3/COP/2012	3/COP/2034	3/COP/2034	3/COP/2005
100 Bar	2/UB/044	3/COP/2012	3/COP/2012	3/COP/2034	3/COP/2034	3/COP/2005
120 Bar	2/UB/046	3/COP/2012	3/COP/2012	3/COP/2034	3/COP/2034	3/COP/2005
130 Bar	2/UB/045	3/COP/2012	3/COP/2012	3/COP/2034	3/COP/2034	3/COP/2005
150 Bar	2/UB/047	3/COP/3012	3/COP/3012	3/COP/3034	3/COP/3034	3/COP/3005

## ECO CROSS OVER PLATES

Galvanized to BS EN ISO 1461:1999  
10mm Mild Steel, use with 12mm fixings

Select the correct Cross Over Plate from the chart or from the 'Series Chart' pick the correct series with the structure leg size you are fitting to. Then choose which diameter boom you wish to fix to. Now pick the Cross Over Plate from the chart below.



Tube	1000 Series	Kg	2000 Series	Kg	3000 Series	Kg	4000 Series	Kg	5000 Series	Kg
48.30	3/COP/1012	2.0	3/COP/2012	2.9	3/COP/3012	3.4	3/COP/4012	4.0	3/COP/5012	4.5
60.30	3/COP/1012	2.0	3/COP/2012	2.9	3/COP/3012	3.4	3/COP/4012	4.0	3/COP/5012	4.5
76.10	3/COP/1034	2.0	3/COP/2034	3.4	3/COP/3034	4.4	3/COP/4034	5.1	3/COP/5034	5.7
88.90	3/COP/1034	2.0	3/COP/2034	3.4	3/COP/3034	4.4	3/COP/4034	5.1	3/COP/5034	5.7
114.30	3/COP/1005	2.0	3/COP/2005	4.9	3/COP/3005	4.9	3/COP/4005	5.8	3/COP/5005	6.3

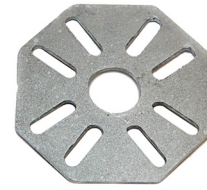
## UNIVERSAL CROSS OVER PLATES

Galvanized to BS ENISO 1461:1999

Material 6mm, use 10mm fixings

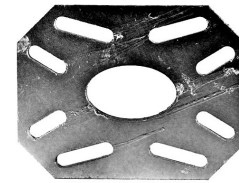
1.03

Part No.		Vertical	Horizontal	Wt Kg
3/COP/2550	25Ø to 50Ø	25 x 25 Angle to 50 x 50 Angle	Same as Vertical	1.1



Material 10mm, use 12mm fixings

Part No.		Tower/Mast Leg Range	Boom Range	Wt Kg
3/COP/810	33.7Ø to 114.3Ø	70 x 70 Angle to 100 x 100 Angle	33.7Ø to 60.3Ø	1.8
3/COP/910	88.9Ø to 219.1Ø	85 x 85 Angle to 200 x 200 Angle	33.7Ø to 88.9Ø	6.4
3/COP/4141	80Ø to 100Ø	80 x 80 Angle to 100 x 100 Angle	Same as leg	3.8



## STANDARD CROSS OVER PLATES

Galvanized to BS ENISO 1461:1999

Material 10mm, use 12mm fixings

Tube	Part No.	U Bolt	Wt Kg
48.3Ø	3/COP/1010	2/UB/021	1.7
60.3Ø	3/COP/2020	2/UB/022	2.0
76.1Ø	3/COP/3030	2/UB/023	2.9
88.9Ø	3/COP/4040	2/UB/024	3.1
114.3Ø	3/COP/5050	2/UB/025	4.8



## UNIVERSAL CORNER BRACKET

Galvanized to BS ENISO 1461:1999

Support aerial/poles range between 48-60 dia, vertically.  
Attach to leg with hook bolts (see fasteners section), 2 per bkt.  
Angle leg size + 52mm = Dim L of hook bolt.  
Order Hook bolt and U bolts separately.

Part No.	Wt Kg
3/AB/125	1.6



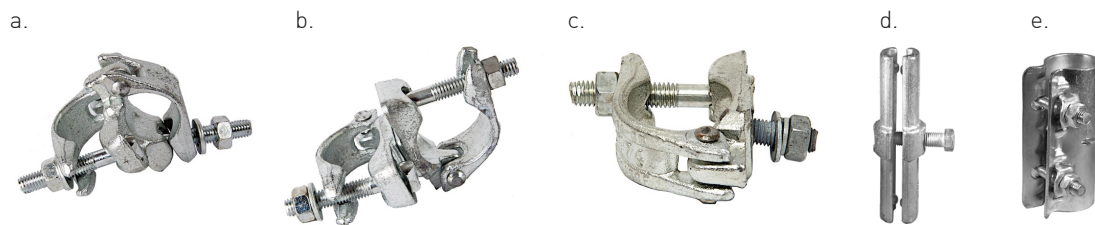


## TUBE COUPLERS

Load bearing couplers incorporating captive 'T' bolts used for connecting tubes. Standard fitting for use with 48 dia (scaffold) tube.

Part No.	Description	Wt Kg	Fig.
2/TC/101	Fixed coupler for fixing tubes at 90°	0.9	a
2/TC/102	Swivel coupler for fixing tubes at any angle	1.2	b
4/TC/103	Half coupler for bolting to brackets, steelwork etc. complete with M12 x 40 bolt	0.5	c
2/TC/110	Tube Joint Pin	1.1	d
2/TC/111	Tube Joint Sleeve	1.0	e

1.04



## COUPLER REDUCERS

Reducers are fitted to aerials to increase their diameter to enable clamping in the couplers.

Part No.	Inside Diameter	Wt Kg
2/TC/105	31.75	0.149
2/TC/106	38.1	0.109
2/TC/108	25.4	0.445



## AERIAL PARALLEL CLAMPS

Galvanized to BS EN ISO 1461:1999  
Fixing range 40mm - 60mm

The parallel clamp is commonly used for fixing vertical aerials to vertical poles.

Part No.	Tube Diameter	Wt Kg
4/AB/201	40 - 60	1.4



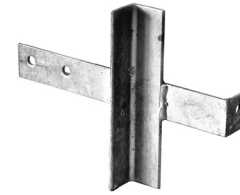
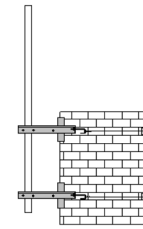
# CHIMNEY LASHING BRACKETS

Galvanized to BS ENISO 1461:1999  
5 metre lengths of tensioning wire

Designed to support 48.3Ø aerial pole with no drilling of brickwork.

1.05

Kit No.	Description	Qty
4/CLB/001	Brackets Set	1
Comprising:		
3/CLB/001	Support Bracket	2
3/CLB/002	Corner Bracket	6
2/GSS/008	6mm Wire 5m Long	2
2/OT/06H	6mm Thimble	4
2/WRG/103	6mm Rope Grip	12
2/HB/007	12mm Hook Bolt	4
2/UB/021	U Bolt	2



# PARALLEL STAND OFF BRACKETS

Galvanized to BS ENISO 1461:1999  
8mm Mild steel  
Use 12mm fixings

Enables poles to be attached in close proximity (50mm).

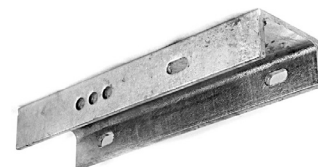
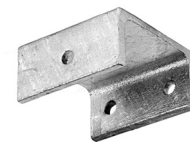


Part No.	Pole Series		Pole Series	Wt Kg	A
3/SOB/1001	1000	x	1000	1.49	50
3/SOB/1002	1000	x	2000	2.19	50
3/SOB/2002	2000	x	2000	2.19	50
3/SOB/3003	3000	x	3000	2.35	50

# CHANNEL WALL BRACKETS

Channel wall brackets are stocked in two types CWB and CWBX.  
CWB for 48.3Ø poles using 10mm fasteners and single hole fixing to wall.  
CWBX for poles using 12mm fasteners and two slots fixing to wall.

Part No.	Pole Sizes/ Series	Stand Off mm	Wt Kg
3/CWB/1041	48.3	102	1.0
3/CWB/1051	48.3	127	1.5
3/CWB/1061	48.3	152	1.8
3/CWBX/4/100	1000	102	3.6
3/CWBX/5/100	1000	127	5.2
3/CWBX/6/100	1000	152	6.6
3/CWBX/4/200	2000	102	3.6
3/CWBX/5/200	2000	127	5.2
3/CWBX/6/200	2000	152	6.5



## WALL BRACKET

48.3Ø aerial pole order 10mm U bolt and fixings  
60.3Ø, 76.1Ø and 88.9Ø aerial poles order 12mm U bolt and fixings

Wall brackets come in pairs as standard (2 and 3 legs) but can be ordered singularly for special installations. The brackets indicated with 'S' are usually available from stock.

Other sizes to order.



1.06

Kit	Wt Kg	2 Leg	Wt Kg	3 Leg	Wt Kg	Pole Dia	Stand Off mm	Id
4/WBA/1090	4.0	3/WB/1092	1.6	3/WB/1093	2.4	48.3	230	S
4/WBA/1120	5.0	3/WB/1122	2.0	3/WB/1123	3.0	48.3	305	S
4/WBA/1150	6.0	3/WB/1152	2.4	3/WB/1153	3.6	48.3	380	S
4/WBA/1180	7.5	3/WB/1182	3.0	3/WB/1183	4.5	48.3	460	S
4/WBA/1240	8.7	3/WB/1242	3.5	3/WB/1243	5.2	48.3	610	-
4/WBA/1300	10.8	3/WB/1302	4.3	3/WB/1303	6.5	48.3	760	-
4/WBA/1360	12.8	3/WB/1362	5.1	3/WB/1363	7.7	48.3	920	-
4/WBA/2090	5.4	3/WB/2092	2.2	3/WB/2093	3.2	60.3	230	-
4/WBA/2120	6.6	3/WB/2122	2.7	3/WB/2123	3.9	60.3	305	-
4/WBA/2150	7.9	3/WB/2152	3.2	3/WB/2153	4.7	60.3	380	-
4/WBA/2180	9.2	3/WB/2182	3.7	3/WB/2183	5.5	60.3	460	-
4/WBA/2240	11.5	3/WB/2242	4.6	3/WB/2243	6.9	60.3	610	-
4/WBA/2300	14.5	3/WB/2302	5.8	3/WB/2303	8.7	60.3	760	-
4/WBA/2360	17.0	3/WB/2362	6.8	3/WB/2363	10.2	60.3	920	-
4/WBA/3090	5.2	3/WB/3092	2.1	3/WB/3093	3.1	76.1	230	-
4/WBA/3120	6.7	3/WB/3122	2.7	3/WB/3123	4.0	76.1	305	-
4/WBA/3150	8.1	3/WB/3152	3.3	3/WB/3153	4.8	76.1	380	-
4/WBA/3180	9.3	3/WB/3182	3.8	3/WB/3183	5.5	76.1	460	-
4/WBA/3240	11.7	3/WB/3242	4.7	3/WB/3243	7.0	76.1	610	-
4/WBA/3300	14.5	3/WB/3302	5.8	3/WB/3303	8.7	76.1	760	-
4/WBA/3360	17.0	3/WB/3362	6.8	3/WB/3363	10.2	76.1	920	-
4/WBA/4120	8.61	3/WB/4122	3.51	3/WB/4123	5.1	88.9	305	-
4/WBA/4150	10.23	3/WB/4152	4.15	3/WB/4153	6.08	88.9	380	-
4/WBA/4180	11.9	3/WB/4182	4.81	3/WB/4183	7.09	88.9	460	-
4/WBA/4240	14.83	3/WB/4242	5.94	3/WB/4243	8.89	88.9	610	-

## 90° MOUNTING BRACKET

Galvanized to BS ENISO 1461:1999

Avoid existing bracings

Use M12 fixings

100mm clearance between tower and pole

Order fixings separately



Part No.	Pole Series	Fixture Series	Wt Kg
3/MB/1001	1000	1000	3.0
3/MB/1002	1000	2000	3.5
3/MB/2001	2000	1000	4.2
3/MB/2002	2000	2000	5.0

# STRAIGHT STAND OFF BRACKETS

Galvanized to BS ENISO 1461:1999  
Stand off A approx 330mm  
Use 12mm fixings



1.07

Economical range of brackets for supporting antenna poles, normally used on tubular and circular legs.

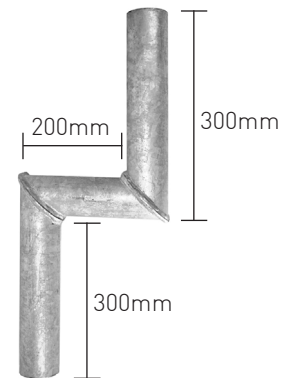
Part No.	Leg Size Series	Antenna Mount Series	Wt Kg
3/SSO/101	1000	1000	3.5
3/SSO/201	2000	1000	4.1
3/SSO/301	3000	1000	4.4
3/SSO/401	4000	1000	4.7
3/SSO/102	1000	2000	4.1
3/SSO/202	2000	2000	4.5
3/SSO/302	3000	2000	5.1
3/SSO/402	4000	2000	5.1

# PARALLEL STAND OFF POLES

Galvanized to BS ENISO 1461:1999  
Material 8mm, use 12mm fixings

Enables poles to be attached in close proximity (50mm).

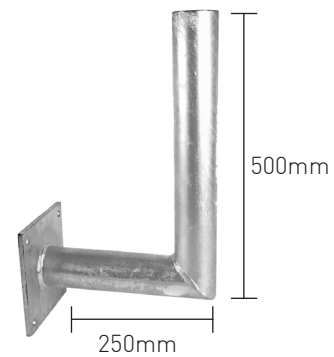
Part No.	Pole Dia	Series
3/SOP/100	48.3	1000
3/SOP/200	60.3	1000
3/SOP/300	76.1	2000
3/SOP/400	88.9	2000
3/SOP/500	114.3	2000



# WALL MOUNTING POLE

Galvanized to BS ENISO 1461:1999  
Use 12mm fixings

Part No.	Pole Dia
3/WMP/76/500	76.1



# ANTENNA POLES

Galvanized to BS ENISO 1461:1999  
 'T' Bar fitted on request  
 All dimensions in millimetres (mm)

Length 'L' is available in 500mm increments from 1m to 4m.  
 However any length can be ordered and will be supplied trimmed  
 from standard full length 7.5m stocks.

To order required length, suffix to appropriate Part No.  
 i.e. 88.9 x 5.0 pole 5m long = 3/AP/304/5000

3.2 and 4.0 wall thickness tube available to order.

Substitute the number 1 for 3.2 wall i.e. 3/AP/101/1000 and 2 for 4.0  
 wall i.e. 3/AP/201/1000

Also stocked Aluminium Scaffold Tube 48mmØ (1 29/32" x 7 SWG)  
 up to 6m long. To BS1139 Material grade 6082-T6 quote.



1.08

**Part No. 2/AP/101A and suffix the length as above.**

Part No.	Tube Size	Length	Wt Kg
3/AP/301/1000	48.3 x 5	1000	5.66
3/AP/301/1500	48.3 x 5	1500	8.49
3/AP/301/2000	48.3 x 5	2000	11.32
3/AP/301/2500	48.3 x 5	2500	14.15
3/AP/301/3000	48.3 x 5	3000	16.98
3/AP/301/3500	48.3 x 5	3500	19.81
3/AP/301/4000	48.3 x 5	4000	22.64
3/AP/302/1000	60.3 x 5	1000	7.23
3/AP/302/1500	60.3 x 5	1500	10.85
3/AP/302/2000	60.3 x 5	2000	14.46
3/AP/302/2500	60.3 x 5	2500	18.8
3/AP/302/3000	60.3 x 5	3000	21.69
3/AP/302/3500	60.3 x 5	3500	25.31
3/AP/302/4000	60.3 x 5	4000	28.92
3/AP/303/1000	76.1 x 5	1000	9.30
3/AP/303/1500	76.1 x 5	1500	13.95
3/AP/303/2000	76.1 x 5	2000	18.60
3/AP/303/2500	76.1 x 5	2500	23.25
3/AP/303/3000	76.1 x 5	3000	27.90
3/AP/303/3500	76.1 x 5	3500	32.55
3/AP/303/4000	76.1 x 5	4000	37.2
3/AP/304/1000	88.9 x 5	1000	10.9
3/AP/304/1500	88.9 x 5	1500	16.35
3/AP/304/2000	88.9 x 5	2000	21.8
3/AP/304/2500	88.9 x 5	2500	27.25
3/AP/304/3000	88.9 x 5	3000	32.7
3/AP/304/3500	88.9 x 5	3500	38.15
3/AP/304/4000	88.9 x 5	4000	43.6
3/AP/205/1000	114.3 x 5	1000	14.3
3/AP/205/1500	114.3 x 5	1500	21.45
3/AP/205/2000	114.3 x 5	2000	28.6
3/AP/205/2500	114.3 x 5	2500	35.75
3/AP/205/3000	114.3 x 5	3000	42.9
3/AP/205/3500	114.3 x 5	3500	50.05
3/AP/205/4000	114.3 x 5	4000	57.2

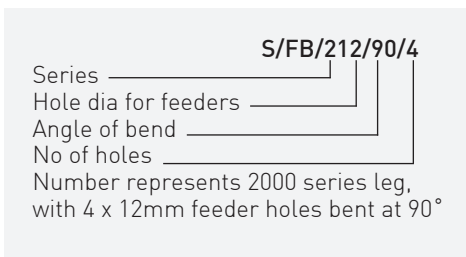
# FEEDER BRACKETS

Galvanized to BS ENISO 1461:1999

Call off standard brackets or specify your own requirements.  
To specify your requirements use the code below in conjunction with the series chart.

1.09

Part No.	Series	Angle	Feeder Holes (65mm centres)
3/FB/112/0/4	1000	0°	4
3/FB/112/0/6	1000	0°	6
3/FB/112/45/6	1000	45°	6
3/FB/112/90/4	1000	90°	4
3/FB/112/90/6	1000	90°	6
3/FB/212/0/4	2000	0°	4
3/FB/212/0/6	2000	0°	6
3/FB/212/45/6	2000	45°	6
3/FB/212/90/4	2000	90°	4
3/FB/212/90/6	2000	90°	6
3/FB/312/0/4	3000	0°	4
3/FB/312/0/6	3000	0°	6
3/FB/312/45/6	3000	45°	6
3/FB/312/90/4	3000	90°	4
3/FB/312/90/6	3000	90°	6
3/FB/412/0/4	4000	0°	4
3/FB/412/0/6	4000	0°	6
3/FB/412/45/6	4000	45°	6
3/FB/412/90/4	4000	90°	4
3/FB/412/90/6	4000	90°	6



# 45° ANGLE STAND OFF BRACKET

Galvanized to BS ENISO 1461:1999

Use 12mm fixing

Mainly used on Angle tower legs.  
Using the standard fixing as shown, the brackets provide vertical fixing points easily and economically.



Part No.	Wt Kg	Series
3/ASO/101	6.1	1000
3/ASO/201	6.6	2000
3/ASO/301	7.1	3000
3/ASO/401	8.2	4000

## SINGLE MOUNTING DISH BRACKET

Galvanized to ENISO 1461:1999  
76.1Ø tube

This economical swivel bracket when used with the standard angle stand off bracket allows easy attachment of up to 300mm microwave dishes eliminating the rake angle of the tower.

Identify the series for the leg from the chart at the rear of the catalogue. Order two leg fixing bolts per kit for the series. Order the kit number to receive a stand off bracket and dish mount bracket.



1.10

Kit	Stand Off Bracket	Dish Bracket	Series	Wt Kg
4/SFDM/1076	3/ASO/101	3/DTP/076	1000	13.0
4/SFDM/2076	3/ASO/201	3/DTP/076	2000	13.6
4/SFDM/3076	3/ASO/301	3/DTP/076	3000	14.1
4/SFDM/4076	3/ASO/401	3/DTP/076	4000	15.2

## AERIAL TILT BRACKETS

Galvanized to BS ENISO 1461:1999  
Stand off 200mm  
Order 2 x bolts per bracket

This economical tilt bracket enables the rake of the structure to be taken out to ensure horizontal adjustment of the aerial.

Kit	Leg Series	Tube Dia	Wt Kg
4/YTB/1000	1000	48.3	6.0
4/YTB/2000	2000	48.3	6.5
4/YTB/3000	3000	48.3	7.0
4/YTB/4000	4000	48.3	7.4



## SINGLE FIXING UNIVERSAL MOUNT

Galvanized to BS ENISO 1461:1999  
60mm dia pole  
Horizontal or vertical fixing

Versatile dish mount uses eco cross over plate for easy assembly and only requires 200mm mounting area. Designed for dishes up to 600mmØ and takes out up to 25 degrees rake in structure.

Kit	Tower Leg	Qty
4/SFUM/1000	1000 Series	1
4/SFUM/2000	2000 Series	1
4/SFUM/3000	3000 Series	1
4/SFUM/4000	4000 Series	1



# UNIVERSAL VERTICAL STAND OFF ASSEMBLY

Galvanized to BS ENISO 1461:1999  
 76.1Ø cranked tubes for dish mounts as illustrated  
 48.3Ø cranked tubes for aerial fixings

1.11

This unique innovation dish/aerial mount enables the mounting pole to be fitted vertically on structures with rakes up to 10. This product is fitted on structures across the country. Specify length of antenna pole required and leg size to ensure correct fixings are included in the kit.



Kit No.	Cranked Arms	Antenna Pole
4/UVPM/1010	48.3	48.3
4/UVPM/3010	76.1	48.3
4/UVPM/3020	76.1	60.3
4/UVPM/3030	76.1	76.1
4/UVPM/3040	76.1	88.9
4/UVPM/3050	76.1	114.3

# ANTENNA SUPPORT MOUNT

Galvanized to BS ENISO 1461:1999  
 1500mm between brackets  
 Up to 3 degrees rake angle  
 Standard antenna poles 2500mm long

Uses standard FLA Angle stand off brackets with antenna support brackets.



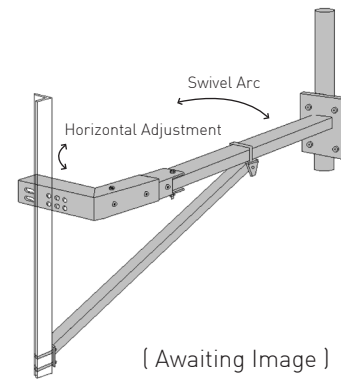
Kit No.	Leg Series	Antenna Pole Dia	Wt Kg
4/ASM/1048	1000	48.3	29
4/ASM/1060	1000	60.3	34
4/ASM/1076	1000	76.1	48
4/ASM/1088	1000	88.9	52
4/ASM/1114	1000	114.3	61
4/ASM/2048	2000	48.3	39
4/ASM/2060	2000	60.3	43
4/ASM/2076	2000	76.1	50
4/ASM/2088	2000	88.9	54
4/ASM/2114	2000	114.3	63
4/ASM/3048	3000	48.3	40
4/ASM/3060	3000	60.3	44
4/ASM/3076	3000	76.1	52
4/ASM/3088	3000	88.9	56
4/ASM/3114	3000	114.3	64
4/ASM/4048	4000	48.3	41
4/ASM/4060	4000	60.3	44
4/ASM/4076	4000	76.1	54
4/ASM/4088	4000	88.9	58
4/ASM/4114	4000	114.3	67



## SINGLE LEG FIXING SWINGING ARM

Galvanized to BS ENISO 1461:1999  
 48.3Ø pole 500mm long  
 Attach to leg with series fixings

Kit No.	Leg Series	Wt Kg
5/SSA/001	1000	40.0
5/SSA/002	2000	41.0
5/SSA/003	3000	41.5
5/SSA/004	4000	42.0



1.12

## DOUBLE ANTENNA MOUNT

Galvanized to BS ENISO 1461:1999  
 60.3Ø x 3000 antenna mount poles  
 Antenna separation 750mm  
 Provision for feeder attachment  
 Complete with long legged U bolts for antenna poles and fasteners  
 Order U/N bolts to suit lower leg size

Kit No.	Wt Kg
4/DYM/01	71.91

This versatile double antenna mount is suitable for any size of antenna. The kit comes with 3 metre poles as standard, these can be changed to suit the size of antenna if required. When used with our Universal Stand Off Assembly kit, this will ensure the antenna are vertical.



## DOUBLE STANDOFF ASSEMBLY

Galvanized to BS ENISO 1461:1999  
 Designed to double up on existing antenna mounts  
 Antenna separation 1070mm  
 Specify size of upright to ensure correct U or N bolts are included in kit.

Kit	Description	Wt Kg
4/DSB/1020	1000 + 2000 Series Assembly	55.58

This versatile double antenna mount is suitable for any size of antenna. The kit comes with 2.5 metre poles as standard, these can be changed to suit the size of antenna if required. When used with our Universal Stand Off Assembly kit, this will ensure the antenna are vertical.



# ANTENNA LEG MOUNT

Galvanized to BS ENISO 1461:1999  
 Leg mounted pole 114.3Ø  
 Pole 114.3Ø x 1500 Lg  
 Standoff 230mm



1.13

On tower leg rakes (0 - 30) the dish mount pole can be kept in the vertical position by use of the slotted holes in the support brackets. Custom made brackets can be made to suit particular rakes. Other sizes available to order.

For complete assembly order Kit No. and suffix with U Bolt reference. i.e 4/ALM/1113/UB/025

Kit No.	Pole	Wt Kg	Bracket	Wt Kg	Tube Series
4/ALM/1112	3/AP/108	28.8	3/AB/112	7.1	1000
4/ALM/1113	3/AP/108	28.8	3/AB/113	7.4	2000
4/ALM/1114	3/AP/108	28.8	3/AB/114	7.4	3000
4/ALM/1115	3/AP/108	28.8	3/AB/115	7.4	4000

Pole 114.3Ø x 1500 Lg

For complete Assembly order Kit No. and suffix with U Bolt reference. i.e 4/ALM/2116/NB/009 to fit 85 x 85 Angle leg.

Kit No.	Pole	Wt Kg	Bracket	Wt Kg	Angle Size	N Bolt
4/ALM/2116	3/AP/108	28.8	3/AB/116	11.1	70 x 70	2/NB/006
					75 x 75	2/NB/007
					80 x 80	2/NB/008
					85 x 85	2/NB/009
					90 x 90	2/NB/018
4/ALM/3117	3/AP/108	28.8	3/AB/117	13.6	100 x 100	2/NB/010
					115 x 115	2/NB/019
					120 x 120	2/NB/011
					127 x 127	2/NB/020
					150 x 150	2/NB/012
					150 x 150	2/NB/012
					200 x 200	2/NB/013

# ANTENNA FACE MOUNT

Galvanized to BS ENISO 1461:1999  
 Fully adjustable poles

Each face mount is manufactured to meet the structure's criteria regarding leg size and rake.

Order requirements, please specify:

- Tower face width
- Tower rake in degrees
- Tower leg type and size
- Vertical pole diameter and length
- Horizontal poles diameter and length



## MINI MOUNT

Galvanized to BS ENISO 1461:1999  
 Quick and easy to install  
 Ideal for restricted roof space  
 No drilling required  
 Foot print 1200 x 600  
 Built in trays for additional balast if required  
 Polystyrene foam base

Kit No.	Height	Top Pole Dia	Wt Kg
5/MMA/048	2000	48.3	90
5/MMA/060	2000	60.3	95



1.14

## ROOF MOUNT FRAME

Galvanized to BS ENISO 1461:1999  
 2.5 metre pole as illustrated  
 1.25 metre pole without stays  
 76Ø or 114Ø support poles standard  
 Lightweight construction  
 Concrete ballast not supplied  
 Dimension of base, 1.2 metre square

Assembled from easily handled parts the frame is ideal when installation prohibits fixing. Comprising of an extruded polystyrene foam base and an integral mesh support for concrete block ballast. The frame can be supplied with the top support pole to customer requirements.

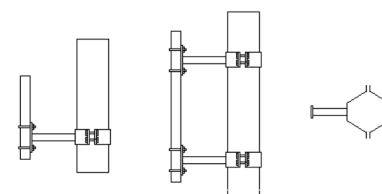
Kit No.	Height	Top Pole Dia	Bottom Pole Dia
5/PMA/076/1250	1250	76.1	N/A
5/PMA/076/2500	2500	76.1	114.3
5/PMA/114/1250	1250	114.3	N/A
5/PMA/114/2500	2500	114.3	114.3



## POLE MOUNT

Galvanized to BS ENISO 1461:1999

Kit No.	Description	Pole Size
5/PMS/048/1	Single Fixing Mount	200/225
5/PMS/048/2	Single Fixing Mount	225/250
5/PMS/048/3	Single Fixing Mount	250/275
5/PMS/048/4	Single Fixing Mount	275/300
5/PMS/076/1	Single Fixing Mount	200/225
5/PMS/076/2	Single Fixing Mount	225/250
5/PMS/076/3	Single Fixing Mount	250/275
5/PMS/076/4	Single Fixing Mount	275/300
5/PMD/048/1	Double Fixing Mount	200/225
5/PMD/048/2	Double Fixing Mount	225/250
5/PMD/048/3	Double Fixing Mount	250/275
5/PMD/048/4	Double Fixing Mount	275/300
5/PMD/076/1	Double Fixing Mount	200/225
5/PMD/076/2	Double Fixing Mount	225/250
5/PMD/076/3	Double Fixing Mount	250/275
5/PMD/076/4	Double Fixing Mount	275/300



[ Awaiting Image ]

# 400S TOWER

Galvanized to BS ENISO 1461:1999  
 Modular 4 side lightweight tower  
 3m sections up to max 12m  
 Max headload 30kg  
 Off the shelf supply

1.15

Full range of accessories available.

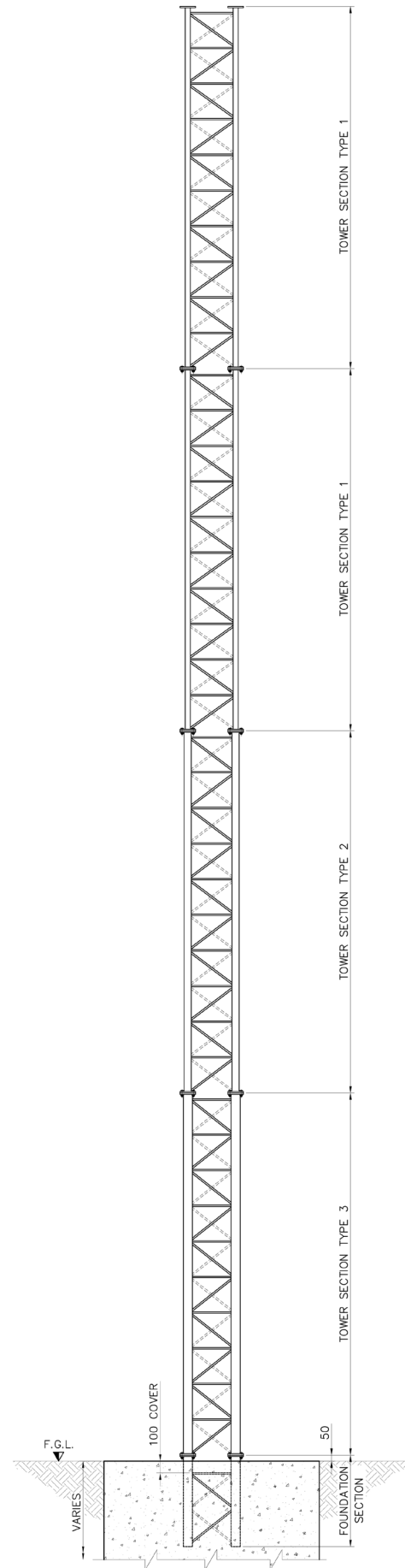
Part No.	Section No.	Wt Kg
4/MS/401S	1	85
4/MS/402S	2	90
4/MS/403S	3	105
4/MS/411S	Base Grillage	30



Tower - Complete with base grillage and all fixings

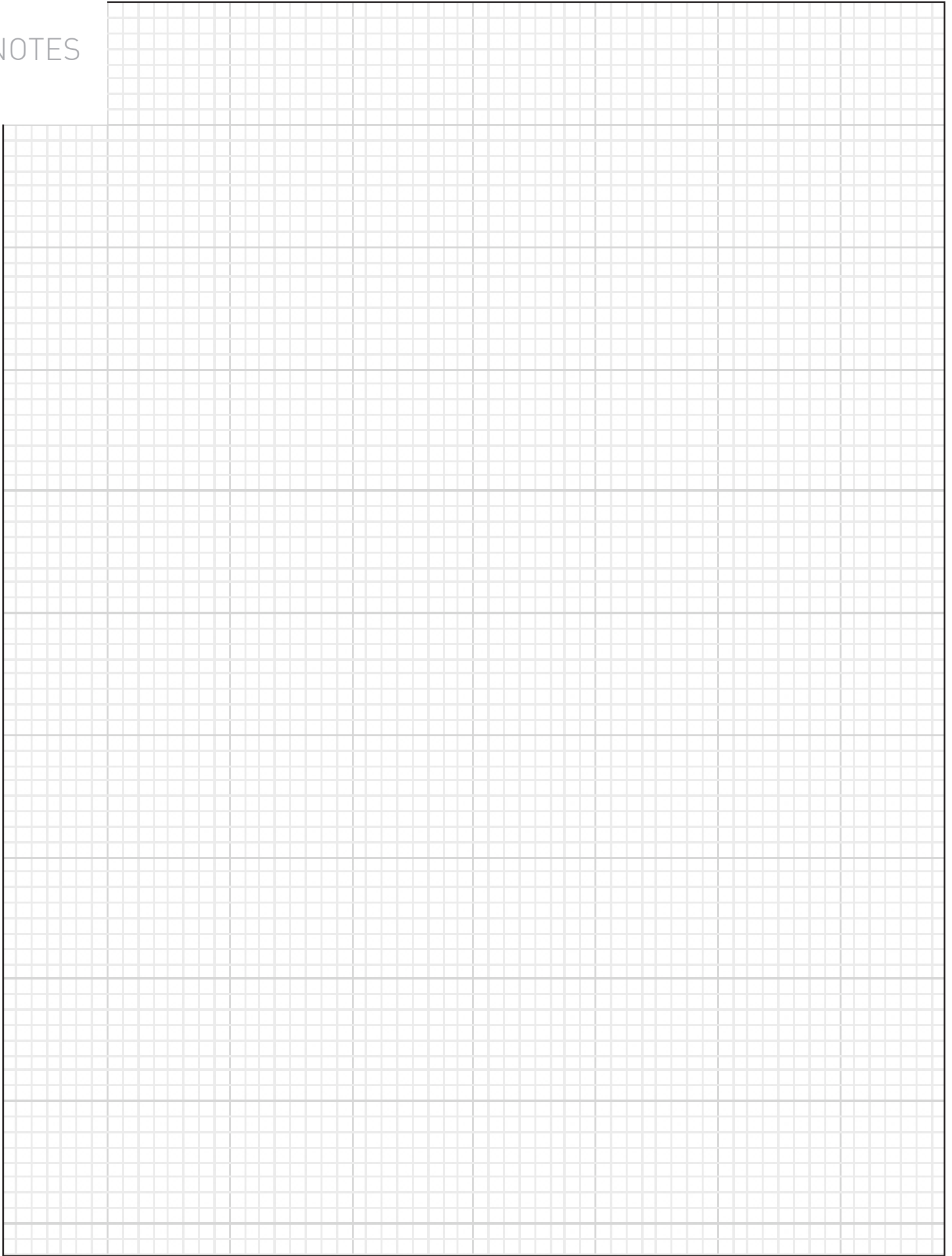
Part No.	Tower Height
5/WS/406/S	6 Metre
5/WS/409/S	9 Metre
5/WS/412/S	12 Metre

Optional fittings available on request.



ELEVATION ON 12m TOWER  
 (1:25)

NOTES



## FASTENERS

- 2.01 U Bolts
- 2.04 N Bolts
- 2.06 V Bolts
- 2.06 Square U Bolts
- 2.07 Rectangular U Bolts
- 2.07 Hook Bolts
- 2.08 Bespoke Fasteners
- 2.09 Galvanized Bolts & Nuts
- 2.10 Dome Head Bolts
- 2.10 Standard Studding
- 2.11 Galvanized Fasteners
- 2.12 Stainless Steel Fasteners & Nylon  
Fibre Washers
- 2.13 Stainless Steel Set Bolts
- 2.13 Stainless Steel Studs
- 2.14 Chemical Anchors Bolts
- 2.14 Resin Anchor Cartridge
- 2.15 Through Bolts
- 2.15 Masonry Anchor Bolts

# U BOLTS

Mild steel grade 43A to BS4360  
 Finish Spun Galvanized  
 All dimensions in millimetres.  
 Cut threads

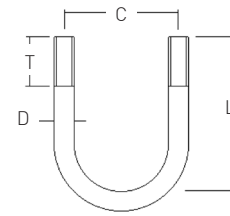
Supplied with 2 full nuts, 2 flat washers and 2 spring washers.  
 Stainless Steel Bolts fabricated to order.

**For Stainless Steel U Bolts suffix the part number with 'SS' i.e  
 2/UB/003/SS**

Material Grade 303 – Nut and Washers A2

## U BOLTS M10

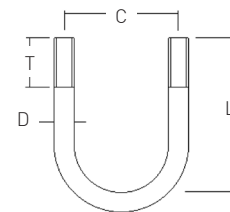
Part No.	C	L	D	T	Tube Size	Wt Kg
2/UB/010	40	60	10	35	26.9	0.113
2/UB/003	46	60	10	28	33.7	0.120
2/UB/040	47	70	10	35	35	0.136
2/UB/004	54	73	10	32	42.4	0.143
2/UB/005	60	78	10	32	48.3	0.150
2/UB/006	74	90	10	32	60.3	0.172
2/UB/007	88	106	10	32	76.1	0.197
2/UB/008	100	120	10	32	88.9	0.217
2/UB/009	125	140	10	50	114.3	0.243



2.01

## U BOLTS M12

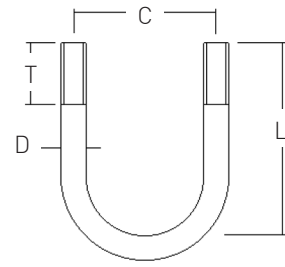
Part No.	C	L	D	T	Tube Size	Wt Kg	Series
2/UB/019	48	77	12	45	33.7	0.231	1000
2/UB/020	57	86	12	45	42.4	0.255	1000
2/UB/021	63	92	12	45	48.3	0.272	1000
2/UB/021/LL	63	150	12	100	48.3	0.357	1000
2/UB/022	75	104	12	45	60.3	0.302	1000
2/UB/022/LL	75	160	12	100	60.3	0.378	1000
2/UB/023	91	120	12	45	76.1	0.339	2000
2/UB/023/LL	91	176	12	100	76.1	0.423	2000
2/UB/024	103	132	12	45	88.9	0.360	2000
2/UB/024/LL	103	190	12	100	88.9	0.451	2000
2/UB/025	129	158	12	45	114.3	0.423	2000
2/UB/025/LL	129	215	12	100	114.3	0.508	2000
2/UB/029	150	185	12	50	135.0	0.470	3000
2/UB/026	154	183	12	45	139.7	0.483	3000
2/UB/026/LL	154	240	12	100	139.7	0.600	3000
2/UB/015	182	210	12	45	168.3	0.545	3000
2/UB/027	210	245	12	50	193.7	0.622	4000
2/UB/028	232	263	12	50	219.1	0.684	4000



## U BOLTS M12 FOR BAR

Supplied with 4 full nuts, 2 flat washers and 2 spring washers.

Part No.	C	L	D	T	Bar Size	Wt Kg	Series
2/UB/039	40	65	12	35	25	0.217	N/A
2/UB/038	50	80	12	45	35	0.239	1000
2/UB/041	54	85	12	45	40	0.254	1000
2/UB/063	60	90	12	45	45	0.262	1000
2/UB/051	65	100	12	50	50	0.286	1000
2/UB/050	70	105	12	50	55	0.300	1000
2/UB/042	79	110	12	45	65	0.313	1000
2/UB/043	84	115	12	45	70	0.322	1000
2/UB/048	95	125	12	45	80	0.346	2000
2/UB/049	110	145	12	50	95	0.394	2000
2/UB/044	114	145	12	45	100	0.395	2000
2/UB/046	134	165	12	45	120	0.442	2000
2/UB/045	142	160	12	35	130	0.432	2000
2/UB/029	150	185	12	50	135	0.460	2000
2/UB/047	165	190	12	40	150	0.500	3000

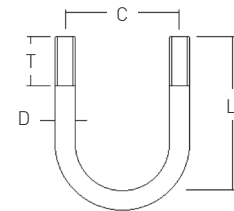


2.02

## U BOLTS M16

Supplied with 4 full nuts, 2 flat washers and 2 spring washers.

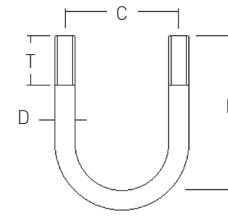
Part No.	C	L	D	T	Tube Size	Wt Kg
2/UB/052	68	100	16	50	48.3	0.519
2/UB/064	70	100	16	50	50.0	0.525
2/UB/065	75	105	16	50	55.0	0.550
2/UB/053	80	110	16	50	60.3	0.564
2/UB/066	85	115	16	50	65.0	0.582
2/UB/067	90	120	16	50	70.0	0.610
2/UB/054	96	126	16	50	76.1	0.630
2/UB/054/LL	96	180	16	100	76.1	0.766
2/UB/068	100	130	16	50	80.0	0.642
2/UB/055	110	140	16	50	88.9	0.689
2/UB/055/LL	110	190	16	100	88.9	8.818
2/UB/069	115	145	16	50	95.0	0.725
2/UB/070	120	150	16	50	100.0	0.750
2/UB/056	134	165	16	50	114.3	0.797
2/UB/061	140	170	16	50	120.0	0.745
2/UB/056/LL	134	215	16	100	114.3	0.931
2/UB/057	160	190	16	50	139.7	0.887
2/UB/057/LL	160	240	16	100	139.7	1.032
2/UB/062	170	200	16	50	150.0	1.003
2/UB/062/LL	170	250	15	100	150.0	1.059
2/UB/058	188	220	16	50	168.3	1.025
2/UB/058/LL	188	270	15	100	168.3	1.152
2/UB/059	214	245	16	50	193.7	1.096
2/UB/059/LL	214	295	16	100	193.7	1.246
2/UB/060	240	270	16	50	219.1	1.181
2/UB/060/LL	240	320	16	100	219.1	1.310





HIGH TENSILE EN16T  
U BOLTS M12

Part No.	C	L	D	T	Tube Size	Wt Kg	Series
2/UB/12/025	40	65	12	35	25	0.217	N/A
2/UB/12/033	48	77	12	45	33.7	0.231	1000
2/UB/12/035	50	80	12	45	35	0.239	1000
2/UB/12/040	54	85	12	45	40	0.254	1000
2/UB/12/042	57	86	12	45	42.4	0.255	1000
2/UB/12/045	60	90	12	45	45	0.262	1000
2/UB/12/048	63	92	12	45	48.3	0.272	1000
2/UB/12/048/LL	63	150	12	100	48.3	0.357	1000
2/UB/12/050	65	100	12	50	50	0.286	1000
2/UB/12/055	70	105	12	50	55	0.300	1000
2/UB/12/060	75	104	12	45	60.3	0.302	1000
2/UB/12/060/LL	75	160	12	100	60.3	0.378	1000
2/UB/12/065	79	110	12	45	65	0.313	1000
2/UB/12/070	84	115	12	45	70	0.322	1000
2/UB/12/076	91	120	12	45	76.1	0.339	2000
2/UB/12/076/LL	91	176	12	100	76.1	0.423	2000
2/UB/12/080	95	125	12	45	80	0.346	2000
2/UB/12/089	103	132	12	45	88.9	0.360	2000
2/UB/12/089/LL	103	190	12	100	88.9	0.451	2000
2/UB/12/095	110	145	12	50	95	0.394	2000
2/UB/12/100	114	145	12	45	100	0.395	2000
2/UB/12/114	129	158	12	45	114.3	0.423	2000
2/UB/12/114/LL	129	215	12	100	114.3	0.508	2000
2/UB/12/120	134	165	12	45	120	0.442	2000
2/UB/12/130	142	160	12	35	130	0.432	2000
2/UB/12/135	150	185	12	50	135	0.460	2000
2/UB/12/139	154	183	12	45	139.7	0.483	3000
2/UB/12/139/LL	154	240	12	100	139.7	0.600	3000
2/UB/12/150	165	190	12	40	150	0.500	3000
2/UB/12/168	182	210	12	45	168.3	0.545	3000
2/UB/12/193	210	245	12	50	193.7	0.622	4000
2/UB/12/219	232	263	12	50	219.1	0.684	4000



2.03

HIGH TENSILE EN16T  
U BOLTS M16

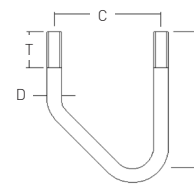
Part No.	C	L	D	T	Tube Size	Wt Kg
2/UB/16/089	110	140	16	50	88.9	0.689
2/UB/16/114	134	165	16	50	114.3	0.797

# N BOLTS

Mild steel grade 43A to BS4360  
 Finish Spun Galvanized  
 All dimensions in millimetres  
 Cut threads

Supplied with 2 full nuts, 2 flat washers and 2 spring washers.  
 Stainless Steel Bolts fabricated to order.

**For Stainless Steel N Bolts suffix the part number with 'SS' i.e  
 2/NB/026/SS**



## N BOLTS M10

Part No.	C	L	D	T	Angle Size	Wt Kg
2/NB/026	52	70	10	30	40 x 40	0.131
2/NB/022	57	70	10	30	45 x 45	0.136
2/NB/004	62	80	10	30	50 x 50	0.153
2/NB/005	73	90	10	30	60 x 60	0.161



2.04

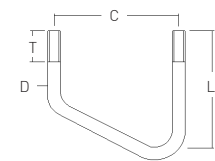
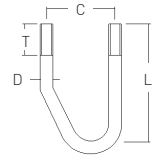
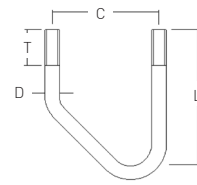
## N BOLTS M12

Part No.	C	L	D	T	Angle Size	Wt Kg	Series
2/NB/021	61	70	12	35	45 x 45	0.231	1000
2/NB/016	65	100	12	50	50 x 50	0.282	1000
2/NB/017	75	110	12	50	60 x 60	0.301	1000
2/NB/015	80	100	12	35	65 x 65	0.289	1000
2/NB/006	85	105	12	35	70 x 70	0.304	1000
2/NB/007	90	110	12	35	75 x 75	0.312	2000
2/NB/008	95	120	12	40	80 x 80	0.340	2000
2/NB/009	100	130	12	40	85 x 85	0.344	2000
2/NB/018	105	140	12	50	90 x 90	0.366	2000
2/NB/010	115	145	12	40	100 x 100	0.384	2000
2/NB/011	135	170	12	50	120 x 120	0.435	2000
2/NB/023	145	180	12	50	130 x 130	0.446	2000
2/NB/012	165	200	12	50	150 x 150	0.491	3000
2/NB/027	175	210	12	50	160 x 160	0.528	3000
2/NB/013	215	260	12	50	200 x 200	0.615	4000
2/NB/028	265	300	12	50	250 x 250	0.735	5000
2/NB/019	130	165	12	50	4 1/2" x 4 1/2"	0.420	2000
2/NB/020	142	177	12	50	5" x 5"	0.458	2000
2/NB/024	170	200	12	50	6" x 6"	0.503	3000
2/NB/025	218	255	12	50	8" x 8"	0.609	4000
2/NB/052	100	120	16	50	70 x 70	0.586	
2/NB/053	105	125	16	50	75 x 75	0.616	
2/NB/054	110	130	16	50	80 x 80	0.640	
2/NB/055	115	135	16	50	85 x 85	0.659	
2/NB/056	120	140	16	50	90 x 90	0.688	
2/NB/057	130	150	16	50	100 x 100	0.733	
2/NB/058	150	170	16	50	120 x 120	0.795	
2/NB/059	180	200	16	50	150 x 150	0.903	
2/NB/060	230	250	16	50	200 x 200	1.101	
2/NB/061	280	300	16	50	250 x 250	1.323	

HIGH TENSILE EN16T  
N BOLTS M12

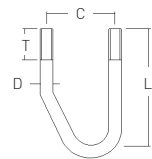
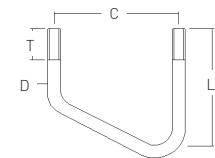
2.05

Part No.	C	L	D	T	Angle Size	Wt Kg	Series
2/NB/12/045	61	70	12	35	45 x 45	0.231	1000
2/NB/12/050	65	100	12	50	50 x 50	0.282	1000
2/NB/12/060	75	110	12	50	60 x 60	0.301	1000
2/NB/12/065	80	100	12	35	65 x 65	0.289	1000
2/NB/12/070	85	105	12	35	70 x 70	0.304	1000
2/NB/12/075	90	110	12	35	75 x 75	0.312	2000
2/NB/12/080	95	120	12	40	80 x 80	0.340	2000
2/NB/12/085	100	130	12	40	85 x 85	0.344	2000
2/NB/12/090	105	140	12	50	90 x 90	0.366	2000
2/NB/12/100	115	145	12	40	100 x 100	0.384	2000
2/NB/12/115	130	165	12	50	4 1/2" x 4 1/2"	0.420	2000
2/NB/12/120	135	170	12	50	120 x 120	0.435	2000
2/NB/12/127	142	177	12	50	5" x 5"	0.458	2000
2/NB/12/130	145	180	12	50	130 x 130	0.446	2000
2/NB/12/150	165	200	12	50	150 x 150	0.491	3000
2/NB/12/152	170	200	12	50	6" x 6"	0.503	3000
2/NB/12/130	145	180	12	50	130 x 130	0.446	2000
2/NB/12/200	215	260	12	50	200 x 200	0.615	4000
2/NB/12/203	218	255	12	50	8" x 8"	0.609	4000
2/NB/12/250	265	300	12	50	250 x 250	0.735	5000
2/NB/12/075/050	65	125	12	50	75 x 50	0.317	1000
2/NB/12/100/065	80	150	12	50	100 x 65	0.371	1000
2/NB/12/100/075	90	150	12	50	100 x 75	0.369	2000
2/NB/12/125/075	90	175	12	50	125 x 75	0.415	2000
2/NB/12/150/075	90	200	12	50	150 x 75	0.462	2000
2/NB/12/050/075	90	100	12	50	50 x 75	0.299	2000
2/NB/12/065/100	115	115	12	50	65 x 100	0.337	2000
2/NB/12/075/100	115	125	12	50	75 x 100	0.346	2000
2/NB/12/075/125	140	125	12	50	75 x 125	0.377	2000



N BOLTS M12 (For Unequal Angle) Mild Steel Grade 43A

Part No.	C	L	D	T	Angle Size	Wt Kg	Series
2/NB/101	65	125	12	50	75 x 50	0.317	1000
2/NB/102	80	150	12	50	100 x 65	0.371	1000
2/NB/103	90	150	12	50	100 x 75	0.369	2000
2/NB/104	90	175	12	50	125 x 75	0.415	2000
2/NB/105	90	200	12	50	150 x 75	0.462	2000
2/NB/201	90	100	12	50	50 x 75	0.299	2000
2/NB/202	115	115	12	50	65 x 100	0.337	2000
2/NB/203	115	125	12	50	75 x 100	0.346	2000
2/NB/204	140	125	12	50	75 x 125	0.377	2000

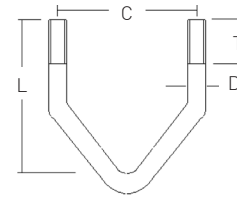


## V BOLTS

Mild steel grade 43A to BS4360  
Finish Spun Galvanized  
All dimensions in millimetres  
Cut threads

Supplied with 2 full nuts, 2 flat washers and 2 spring washers.

Part No.	C	L	D	T	Description
2/VB/001	60	85	10	60	0.231kg
2/VB/020	48	80	12	50	
2/VB/129	201	158	12	50	5" x 5"
2/VB/100	163	136	12	50	4" x 4"
2/VB/5309	80	95	10	65	20-60mm
2/VB/115	185	147	12	50	115-115mm



2.06

## U BOLTS – SQUARE

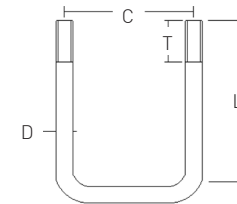
Mild steel grade 43A to BS4360  
Finish Spun Galvanized  
All dimensions in millimetres  
Cut threads

Supplied with 2 full nuts, 2 flat washers and 2 spring washers.  
Stainless Steel Bolts fabricated to order.

For Stainless Steel U Bolts suffix the part number with 'SS' i.e  
2/SQB/101/SS

U BOLTS SQUARE M12

Part No.	C	L	D	T	Box Size	Wt Kg	Series
2/SQB/101	66	108	12	50	50 x 50	0.311	1000
2/SQB/102	76	118	12	50	60 x 60	0.336	1000
2/SQB/103	86	128	12	50	70 x 70	0.364	1000
2/SQB/104	96	138	12	50	80 x 80	0.390	2000
2/SQB/105	106	148	12	50	90 x 90	0.415	2000
2/SQB/106	116	158	12	50	100 x 100	0.445	2000
2/SQB/107	136	178	12	50	120 x 120	0.498	2000
2/SQB/112	165	200	12	50	150 x 150	0.566	3000



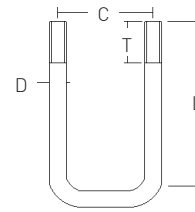
HIGH TENSILE EN16T  
SQUARE BOLTS M12

Part No.	C	L	D	T	Box Size	Wt Kg	Series
2/SQB/12/050	66	108	12	50	50 x 50	0.311	1000
2/SQB/12/060	76	118	12	50	60 x 60	0.336	1000
2/SQB/12/070	86	128	12	50	70 x 70	0.364	1000
2/SQB/12/080	96	138	12	50	80 x 80	0.390	2000
2/SQB/12/090	106	148	12	50	90 x 90	0.415	2000
2/SQB/12/100	116	158	12	50	100 x 100	0.445	2000

# U BOLTS – RECTANGULAR

## RECTANGULAR U BOLTS M12

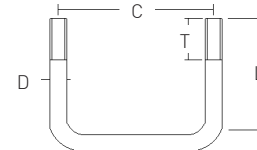
Part No.	C	L	D	T	RSC Size	Wt Kg	Series
2/SQB/109	67	160	12	50	102 x 51	0.397	1000
2/SQB/110	80	185	12	50	127 x 64	0.456	1000
2/SQB/113	91	202	12	50	152 x 76	0.507	2000
2/SQB/115	91	253	12	50	203 x 76	0.599	2000



2.07

## RECTANGULAR U BOLTS M12

Part No.	C	L	D	T	RSC Size	Wt Kg	Series
2/SQB/108	143	122	12	50	64 x 127	0.383	2000
2/SQB/111	118	109	12	50	51 x 102	0.364	2000
2/SQB/114	167	125	12	50	76 x 152	0.438	3000
2/SQB/116	218	125	12	50	76 x 203	0.599	4000

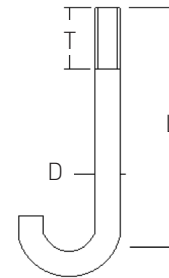


# HOOK BOLTS

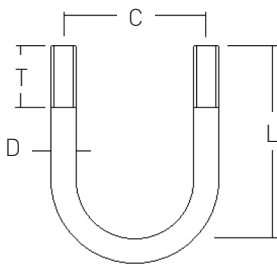
2/HB/001 Material Stainless Steel Grade 303  
 2/HB/002 - 2/HB/011 Material Mild Steel Grade 43A to BS 4360  
 Finish Spun Galvanized  
 All dimensions in millimetres  
 Cut threads

Supplied with 2 full nuts, 2 flat washers and 2 spring washers.  
 Stainless Steel Bolts fabricated to order.

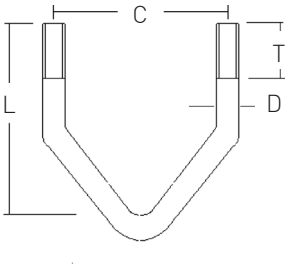
Part No.	L	D	T	Inside gap of hook	Wt Kg
2/HB/001	40	6	20	10	0.015
2/HB/002	80	10	40	20	0.084
2/HB/003	110	10	40	20	0.101
2/HB/004	150	10	40	24	0.131
2/HB/006	250	12	150	24	0.261
2/HB/007	200	12	150	24	0.225
2/HB/008	140	8	25	16	0.076
2/HB/010	80	8	45	16	0.049
2/HB/011	145	12	105	24	0.183



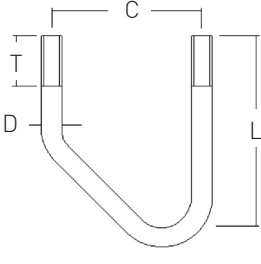
# BESPOKE FASTENERS



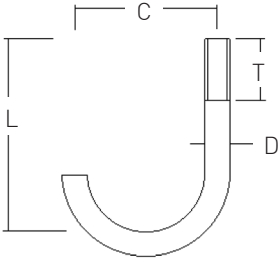
Code: UB



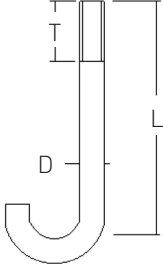
Code: VB



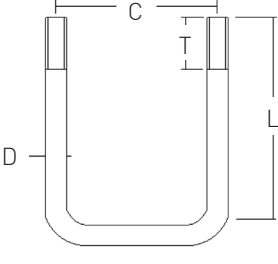
Code: NB



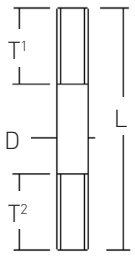
Code: JB



Code: HB



Code: SQB



Code: TIB

2.08

Should any of our standard fasteners not meet your special requirement, we can offer a bespoke manufacture service.

By using the shape code shown, provide the necessary dimensions of the letters.

For example:

Code UB  
 D = 12  
 L = 150  
 C = 100  
 T = 60

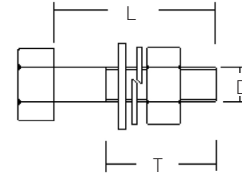
[ C dim = size + Dia + 2mm ]

Either specify galvanized or stainless steel ( Grade 4.6 or 8.8 )

If there are any other shapes of fasteners you require not shown, please contact our sales office who will be pleased to deal with your enquiries.

# GALVANIZED BOLTS & NUTS

All spun galvanized to ENISO 1461:1999  
Grade 8.8  
All dimensions in millimetres  
Set Bolts held in stock  
Structural Bolts to order



Supplied with 1 full nut, 1 form E flat washer and 1 spring washer.

SET BOLTS  
BS 3692-DIN933

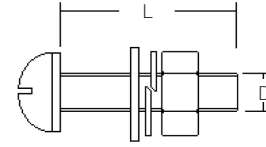
2.09

Part No.	L	D	T
2/BNW/10020/S	20	10	20
2/BNW/10025/S	25	10	25
2/BNW/10030/S	30	10	30
2/BNW/10035/S	35	10	35
2/BNW/10040/S	40	10	40
2/BNW/10100/S	100	10	100
2/BNW/12020/S	20	12	20
2/BNW/12025/S	25	12	25
2/BNW/12030/S	30	12	30
2/BNW/12035/S	35	12	35
2/BNW/12040/S	40	12	40
2/BNW/12045/S	45	12	45
2/BNW/12055/S	55	12	55
2/BNW/16035/S	35	16	35
2/BNW/16040/S	40	16	40
2/BNW/16045/S	45	16	45
2/BNW/16050/S	50	16	50
2/BNW/20030/S	30	20	30
2/BNW/20035/S	35	20	35
2/BNW/20040/S	40	20	40
2/BNW/20045/S	45	20	45
2/BNW/20050/S	50	20	50
2/BNW/20055/S	55	20	55
2/BNW/20060/S	60	20	60
2/BNW/20065/S	65	20	65
2/BNW/20070/S	70	20	70
2/BNW/20075/S	75	20	75
2/BNW/20080/S	80	20	80



# DOME HEAD BOLTS

BS 3692 DIN601  
Mild Steel Grade 4.6  
Finish Spun Galvanized  
Fully Threaded  
Supplied with 1 full nut, 1 form E flat washer and 1 spring washer



Part No.	Size	
2/BNW/10030/DH	30	10
2/BNW/10040/DH	40	10
2/BNW/12030/DH	30	12
2/BNW/12040/DH	40	12
2/BNW/12045/DH	45	12
2/BNW/12050/DH	50	12
2/BNW/12055/DH	55	12
2/BNW/12060/DH	60	12

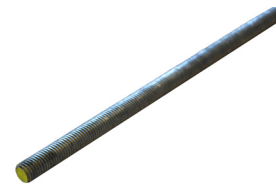


2.10

# STANDARD STUDDING

Galvanized to BS ENISO 1461:1999  
Grade 8.8

Part No.	Wt Kg	D	L
2/GVF/127	0.514	M10	1000
2/GVF/128	0.738	M12	1000
2/GVF/129	1.327	M16	1000
2/GVF/130	1.620	M20	1000





# GALVANIZED FASTENERS

Full and half nuts – taped over size  
 Spring washers – form A  
 All spun galvanized to ENISO 1461:1999

2.11

## FULL NUT

Part No.	Size
2/GVF/001	M10
2/GVF/004	M12
2/GVF/007	M16
2/GVF/043	M20



## FLAT WASHER FORM E

Part No.	Size
2/GVF/003	M10 x 21
2/GVF/006	M12 x 24
2/GVF/009	M16 x 30
2/GVF/041	M20 x 36



## HALF NUT

Part No.	Size
2/GVF/030	M10
2/GVF/031	M12
2/GVF/032	M16



## FLAT WASHER FORM F

Part No.	Size
2/GVF/003F	M10 x 30
2/GVF/006F	M12 x 35
2/GVF/009F	M16 x 50



## SPRING WASHER

Part No.	Size
2/GVF/002	M10
2/GVF/005	M12
2/GVF/008	M16
2/GVF/042	M20



## FLAT WASHER FORM G

Part No.	Size
2/GVF/035	M10 x 30
2/GVF/033	M12 x 35
2/GVF/040	M16 x 50



## TAPER WASHER

Part No.	Size
2/GVF/010	M10
2/GVF/011	M12
2/GVF/012	M16



## ROUND PACK WASHER

Part No.	Size
2/GVF/023	M10 x 8
2/GVF/024	M12 x 8
2/GVF/025	M16 x 8



## SQUARE PACK WASHER

Part No.	Size	Thick
2/GVF/014	M10	6
2/GVF/017	M12	6
2/GVF/015	M10	8
2/GVF/016	M10	10
2/GVF/020	M16	6
2/GVF/021	M16	8
2/GVF/022	M16	10



# STAINLESS STEEL FASTENERS & NYLON FIBRE WASHERS

All fasteners Grade A2

## FULL NUT

Part No.	Size
2/SSF/001	M6
2/SSF/005	M8
2/SSF/009	M10
2/SSF/013	M12
2/SSF/017	M16



## SPRING WASHER

Part No.	Size
2/SSF/004	M6
2/SSF/008	M8
2/SSF/012	M10
2/SSF/016	M12
2/SSF/020	M16



2.12

## HALF NUT

Part No.	Size
2/SSF/010	M10
2/SSF/014	M12
2/SSF/018	M16



## FLAT WASHER FORM B

Part No.	Size
2/SSF/003	M6 x 12.5
2/SSF/007	M8 x 17
2/SSF/011	M10 x 21
2/SSF/015	M12 x 24
2/SSF/019	M16 x 30



## LOCK NUT (NYLOC)

Part No.	Size
2/SSF/06LN	M6
2/SSF/08LN	M8
2/SSF/10LN	M10
2/SSF/12LN	M12
2/SSF/16LN	M16



## PENNY WASHER FORM G

Part No.	Size
2/SSF/002	M6 x 18
2/SSF/006	M8 x 24
2/SSF/021	M10 x 30
2/SSF/022	M12 x 36



## NYLON FIBRE WASHER

Part No.	Size
2/NFW/006	M6
2/NFW/008	M8
2/NFW/010	M10
2/NFW/012	M12
2/NFW/016	M16



# STAINLESS STEEL SET BOLTS

Stainless Steel Grade A2  
Fully Threaded  
For nuts, washers etc see previous pages

## M6 STAINLESS STEEL BOLTS

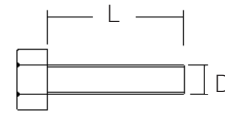
Part No.	L	D
2/SSF/06020	20	6
2/SSF/06025	25	6
2/SSF/06035	35	6
2/SSF/06040	40	6
2/SSF/06045	45	6
2/SSF/06050	50	6
2/SSF/06060	60	6
2/SSF/06100	100	6

## M8 STAINLESS STEEL BOLTS

Part No.	L	D
2/SSF/08025	25	8
2/SSF/08030	30	8
2/SSF/08035	35	8
2/SSF/08040	40	8
2/SSF/08045	45	8
2/SSF/08050	50	8
2/SSF/08055	55	8
2/SSF/08060	60	8

## M10 STAINLESS STEEL BOLTS

Part No.	L	D
2/SSF/10025	25	10
2/SSF/10030	30	10
2/SSF/10040	40	10
2/SSF/10045	45	10
2/SSF/10060	60	10



2.13

# STAINLESS STEEL STUDS

Standard Stock Lengths  
Grade A2 - 304  
Machine cut to length - no burrs  
Other lengths available to order

## STAINLESS STEEL - FULL LENGTHS

Part No.	Wt Kg	D	L
2/SSF/027	0.170	M6	1000
2/SSF/028	0.308	M8	1000
2/SSF/029	0.488	M10	1000
2/SSF/030	0.707	M12	1000
2/SSF/031	1.308	M16	1000



## STAINLESS STEEL STUDS

Part No.	Wt Kg	D	L
2/SSS/08100	0.031	M8	100
2/SSS/08150	0.047	M8	150
2/SSS/08200	0.061	M8	200
2/SSS/08250	0.077	M8	250
2/SSS/10100	0.048	M10	100
2/SSS/10150	0.072	M10	150
2/SSS/10200	0.097	M10	200
2/SSS/10250	0.121	M10	250



# CHEMICAL ANCHORS BOLTS

Chemical capsules contain polyester resin and quartz granules, plus a phial hardener. Studs have shaped tips to ensure thorough mixing of the adhesive when driven into the capsule with a suitable power tool.

The capsule and phial are crushed and mixed in the hole and the contents form a resinous mortar.

Bolts and Capsules supplied in packs of 10.

Stud Part No.	D	L	Drill Dia	Min Hole Depth	Max Fixing Thickness	Capsule Part No.
2/CAS/08/110	M8	110	10mm	80	16mm	2/CAC/008
2/CAS/10/130	M10	130	12mm	90	22mm	2/CAC/010
2/CAS/12/160	M12	160	14mm	110	30mm	2/CAC/012
2/CAS/16/190	M16	190	18mm	125	38mm	2/CAC/016

2.14



# RESIN ANCHOR CARTRIDGE

Suitable for fixing studs, bolts and wall ties in a wide range of substrates such as concrete, brickwork, masonry and stone.

Advantages are expansion free anchoring, fits standard coaxial applicator and open cartridges can be re-used at a later date if a new nozzle is used.

Part No.	Description	Wt Kg
2/CAR/400	Cartridge Resin	0.830
2/CAG/400	Cartridge Gun	0.500
2/CAN/400	Cartridge Nozzle	0.001



# THROUGH BOLTS

For fixing into concrete  
Through Bolt requires a hole the same diameter as the bolt

This may be drilled through the prepositioned fixture, so removing the need for marking out. The Through Bolt is a cost effective economy anchor, combining good load carrying characteristics, with ease of fitting. For use in concrete only if minimum strength 20 N/mm<sup>2</sup>.



2.15

Part No.	Wt Kg	D	L	Drill Dia	Tightening Torque
2/TBF/08/080	0.036	M8	80mm	8mm	15
2/TBF/10/080	0.056	M10	80mm	10mm	25
2/TBF/10/115	0.077	M10	115mm	10mm	25
2/TBF/12/100	0.098	M12	100mm	12mm	45
2/TBF/12/135	0.128	M12	135mm	12mm	45
2/TBF/16/180	0.303	M16	180mm	16mm	110

# MASONRY ANCHOR BOLTS

Electroplated zinc finish to BS 1706 Class C(ZA<sup>2</sup>)  
Masonry drill bits in Tools section  
Suitable for concrete and most types of masonry  
Ideal for overhead and ceiling work



For wall fixing, provides a stud on which to hang the fixture during installation. For fixing where the bolt needs to be inserted after the shield has been positioned, e.g installing heavy equipment or machinery.

Part No.	Wt Kg	Bolt Size	Shield Length	Fixing Thickness		Hole Max Dia	Hole Depth
				Min	Max		
2/MAB/0810B	0.055	M8	50	0	10	14	55
2/MAB/0825B	0.060	M8	50	0	25	14	55
2/MAB/1010B	0.097	M10	60	0	10	16	65
2/MAB/1025B	0.103	M10	60	0	25	16	65
2/MAB/1210B	0.173	M12	75	0	10	20	85
2/MAB/1225B	0.185	M12	75	0	25	20	85
2/MAB/1615B	0.408	M16	115	0	15	25	125
2/MAB/1630B	0.435	M16	115	10	30	25	125
2/MAB/0810S	0.058	M8	50	0	10	14	55
2/MAB/0825S	0.062	M8	50	0	25	14	55
2/MAB/1015S	0.099	M10	60	0	15	16	65
2/MAB/1030S	0.111	M10	60	0	30	16	65
2/MAB/1215S	0.187	M12	75	0	15	20	85
2/MAB/1230S	0.198	M12	75	0	30	20	85
2/MAB/1615S	0.430	M16	115	0	15	25	125
2/MAB/1635S	0.457	M16	115	10	35	25	125

## CABLE & FEEDER FIXING SYSTEMS

- 3.01 Heavy Duty Cable Tray
- 3.01 Flat Bends & Risers
- 3.02 Cable Tray Equal Tee
- 3.02 Top Hat Bracket
- 3.02 Vertical Cable Tray Mounting Bracket
- 3.03 Heavy Duty Cable Ladder
- 3.04 Cable Support System
- 3.04 Single Vertical Support Kit
- 3.04 Single Horizontal Support Kit
- 3.05 Double Vertical Support Kit
- 3.05 Double Horizontal Support Kit
- 3.05 Leg Fixing Bracket
- 3.05 Horizontal Wall Fixing Kit
- 3.06 Horizontal End Wall Fixing Bracket
- 3.06 Vertical Wall Fixing Bracket
- 3.06 Pack Plates
- 3.07 Cable Straps Single Part
- 3.07 Cable Ties
- 3.08 Feeder Clamps
- 3.08 Cable Support Saddle
- 3.09 Cable Guard
- 3.09 Channel Support System
- 3.10 Hose Clips

# HEAVY DUTY CABLE TRAY

Galvanized to BS ENISO 1461:1999

Type A trays are designed to carry heavier cables with less support than a standard tray. The depth of flange is 50mm with a return of 32mm means easier alignment when joined and adds greatly to the overall strength of the installation.

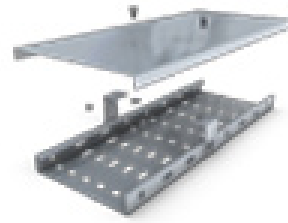
Type B trays are 25mm in depth with an 8mm return.

To order couplers c/w fixings bolts request:

4/CTY/013 Type A

4/CTY/014 Type B

**For ventilated covers change part number suffix from C to VC.  
Standard cover depth 22mm**



3.01

Part No.	Type	Width	Height	Thick	Closed Cover
2/CTY/001	A	150	50	1.0	2/CTY/001/C
2/CTY/002	A	225	50	1.5	2/CTY/002/C
2/CTY/003	A	300	50	1.5	2/CTY/003/C
2/CTY/004	A	450	50	2.0	2/CTY/004/C
2/CTY/005	A	600	50	2.0	2/CTY/005/C
2/CTY/006	A	750	50	2.0	2/CTY/006/C
2/CTY/007	B	100	25	0.8	2/CTY/007/C
2/CTY/008	B	150	25	0.8	2/CTY/008/C
2/CTY/009	B	225	25	1.0	2/CTY/009/C
2/CTY/010	B	300	25	1.5	2/CTY/010/C
2/CTY/011	B	450	25	1.5	2/CTY/011/C
2/CTY/012	B	600	25	1.5	2/CTY/012/C

# FLAT BENDS & RISERS

Galvanized to BS ENISO 1461:1999

Also available Adjustable Bends and Risers, Equal and Unequal Tees.



90° Flat Bend	90° Inside Riser	90° Outside Riser	Type	Width
2/CTY/001/FB	2/CTY/001/IR	2/CTY/001/OR	A	150
2/CTY/002/FB	2/CTY/002/IR	2/CTY/002/OR	A	225
2/CTY/003/FB	2/CTY/003/IR	2/CTY/003/OR	A	300
2/CTY/004/FB	2/CTY/004/IR	2/CTY/004/OR	A	450
2/CTY/005/FB	2/CTY/005/IR	2/CTY/005/OR	A	600
2/CTY/006/FB	2/CTY/006/IR	2/CTY/006/OR	A	750
2/CTY/007/FB	2/CTY/007/IR	2/CTY/007/OR	B	100
2/CTY/008/FB	2/CTY/008/IR	2/CTY/008/OR	B	150
2/CTY/009/FB	2/CTY/009/IR	2/CTY/009/OR	B	220
2/CTY/010/FB	2/CTY/010/IR	2/CTY/010/OR	B	300
2/CTY/011/FB	2/CTY/011/IR	2/CTY/011/OR	B	450
2/CTY/012/FB	2/CTY/012/IR	2/CTY/012/OR	B	600



## CABLE TRAY EQUAL TEE

Galvanized to BS ENISO 1461:1999

For closed covers change part number suffix from ET to ETC  
For ventilated covers change part number suffix from ET to ETVC

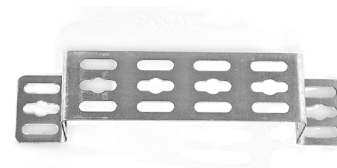


Part No.	Type	Width	Weight
2/CTY/001/ET	A	150	1.9
2/CTY/002/ET	A	225	3.0
2/CTY/003/ET	A	300	4.0
2/CTY/004/ET	A	450	8.6
2/CTY/005/ET	A	600	12.7
2/CTY/006/ET	A	750	17.6
2/CTY/007/ET	B	100	1.1
2/CTY/008/ET	B	150	1.3
2/CTY/009/ET	B	225	2.1
2/CTY/010/ET	B	300	3.5
2/CTY/011/ET	B	450	5.9
2/CTY/012/ET	B	600	8.9

3.02

## TOP HAT BRACKET

Galvanized to BS ENISO 1461:1999  
Designed for fixing to flat surfaces

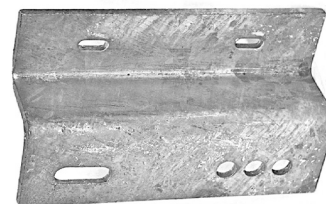


Part No.	Tray Width	Weight
2/CTY/001/THB	150	0.2
2/CTY/002/THB	225	0.3
2/CTY/003/THB	300	0.4
2/CTY/004/THB	450	1.2
2/CTY/005/THB	600	1.6
2/CTY/006/THB	750	1.9

## VERTICAL CABLE TRAY MOUNTING BRACKETS

Galvanized to BS ENISO 1461:1999  
Attach to 2000 Series Vertical Poles  
For Vertical Cable Tray Bracket Kit comprising: 2 Brackets and 4 Bolts order 4/CTY/SFV/2000

Order U Bolts separately to suit size of pole

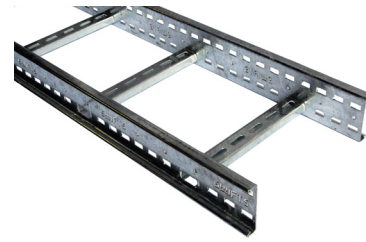


Part No.	Description	Qty
4/CTY/SFV/2000	Mounting Kit Comprises	
3/CTY/SFV/2000	Single Bracket	2
2/SSF/06025	M6 x 25 SS Bolt	8
2/SSF/004	M6 SS Spring Washer	8
2/SSF/002	M6 SS Penny Washer	16
2/SSF/001	M6 SS Nut	8



# HEAVY DUTY CABLE LADDER

Galvanized to BS ENISO 1461:1999  
 Slotted side rails  
 Rung slots 35mm x 11mm  
 Standard ladder length 3 metres  
 Use in conjunction with the FLA cable support system



## Cable Ladder

Part No.	Width
2/GCL/150/100	150
2/GCL/300/100	300
2/GCL/450/100	450
2/GCL/600/100	600

## Flat Bend

Part No.	Width
2/GCL/150/FB90	150
2/GCL/300/FB90	300
2/GCL/450/FB90	450
2/GCL/600/FB90	600

## Flat Bend



3.03

## Outside Riser

Part No.	Width
2/GCL/150/OR90	150
2/GCL/300/OR90	300
2/GCL/450/OR90	450
2/GCL/600/OR90	600

## Inside Riser

Part No.	Width
2/GCL/150/IR90	150
2/GCL/300/IR90	300
2/GCL/450/IR90	450
2/GCL/600/IR90	600

## Inside Riser



Part No.	Description	Fig.
4/GCL/HDB/100	Hold Down Bracket (Pair)	a
4/GCL/HDC/100	Hold Down Clip	b
4/GCL/FHC/100	Flexible Horizontal Connectors (Pair)	
4/GCL/VH/100	Vertical Hinge (Pair)	c
4/GCL/CP/100	Coupler (Pair)	d

a.



b.



c.



d.



# CABLE SUPPORT SYSTEM

Galvanized to BS ENISO 1461:1999  
 Gantry Poles  
 300mm square base plates with 14mm holes for fixing bolts

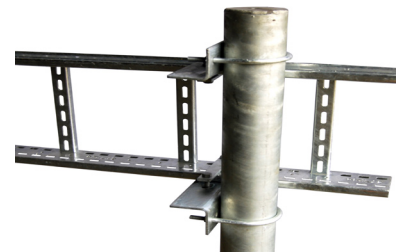
Part No.	Dia	Length	Weight
3/GGP/89/3000	88.9	3m	29
3/GGP/89/3000/HD	88.9	3m	40
3/GGP/89/3500	88.9	3.5m	32
3/GGP/89/3500/HD	88.9	3.5m	45
3/GGP/89/4000	88.9	4m	34
3/GGP/89/4000/HD	88.9	4m	51
3/GGP/114/3000	114.3	3m	37
3/GGP/114/3000/HD	114.3	3m	49
3/GGP/114/3500	114.3	3.5m	42
3/GGP/114/3500/HD	114.3	3.5m	55
3/GGP/114/4000	114.3	4m	47
3/GGP/114/4000/HD	114.3	4m	62



3.04

# SINGLE VERTICAL SUPPORT KIT

Part No.	Ladder Size	Tube
4/GLR/SFV/TB	All	2.43
4/GLR/SFV/114	All	3.54



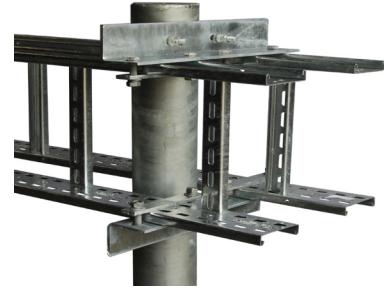
# SINGLE HORIZONTAL SUPPORT KIT

Part No.	Ladder Size	Type
4/GLR/SF/150	150	A
4/GLR/SF/300	300	A
4/GLR/SF/450	450	B
4/GLR/SF/600	600	B
4/GLR/SF/750	750	B
4/GLR/SF/900	900	B



## DOUBLE VERTICAL SUPPORT KIT

Part No.	Ladder Size
4/GLR/DFV/TB	All



## DOUBLE HORIZONTAL SUPPORT KIT

Part No.	Ladder Size
4/GLR/DF/150	150
4/GLR/DF/300	300
4/GLR/DF/450	450
4/GLR/DF/600	600

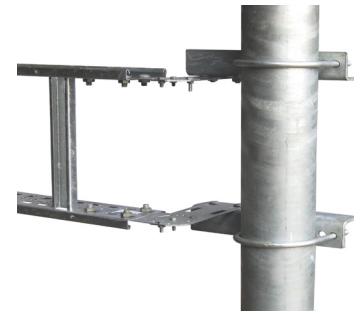


3.05

## LEG FIXING BRACKETS

Supplied with 2 swivel brackets and bolts  
Use 12mm fixings, order separately

Part No.	Leg Series	Weight
4/GLR/LFB/150	1000	3.050
4/GLR/LFB/300	2000	3.686
4/GLR/LFB/450	3000	4.090
4/GLR/LFB/600	4000	4.596



## HORIZONTAL WALL FIXING KIT

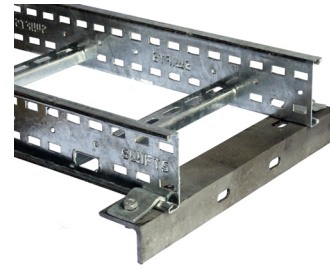
Part No.	Ladder Size
4/GLR/WF/150	150
4/GLR/WF/300	300
4/GLR/WF/450	450
4/GLR/WF/600	600



## HORIZONTAL END WALL FIXING BRACKET

Supplied with 2 hold down brackets and bolts

Part No.	Ladder Size	Weight
4/GLR/WFB/150	150	2.43
4/GLR/WFB/300	300	3.54
4/GLR/WFB/450	450	4.47
4/GLR/WFB/600	600	5.49



## VERTICAL WALL FIXING BRACKET

Part No.	Ladder Size
4/GLR/WFV/150	150
4/GLR/WFV/300	300
4/GLR/WFV/450	450
4/GLR/WFV/600	600



3.06

## PACK PLATES

Galvanized to BS EN ISO 1461:1999  
Ideal for supporting Cable Tray to gantry poles  
Holes 14mm for 12mm fixings

Part No.	Description	For Tube Diameter
3/PP/048/08	8mm	48.3
3/PP/048/10	10mm	48.3
3/PP/060/08	8mm	60.3
3/PP/060/10	10mm	60.3
3/PP/076/08	8mm	76.1
3/PP/076/10	10mm	76.1
3/PP/090/08	8mm	88.9
3/PP/090/10	10mm	88.9
3/PP/114/08	8mm	114.3
3/PP/114/10	10mm	114.3



## CABLE STRAPS SINGLE PART

Part No.	Cable Size	Fixing Bolt
2/CS/07/M10	7.3	10
6/CS/004	9	6
2/CS/10/M10	9.5	10
2/CS/11/M10	11.5	10
6/CS/005	12.7	6
6/CS/006	15.2	6
6/CS/007	17.8	6
6/CS/008	20.3	6
2/CS/009	22.8	6
2/CS/010	25.4	6
2/CS/012	30.4	10
2/CS/014	35.6	10
2/CS/016	40.6	10
2/CS/018	45.7	10
2/CS/020	50.8	10



3.07

Part No.	Cable Size	Fixing Bolt	Feeder Ref.
2/CC/000	11	10	
2/CC/001	13	10	
2/FCS/016	16	10	LDF4.50
2/FCS/021	21	10	HJ4.5-50
2/FCS/028	28	10	LDF5.50
2/FCS/040	40	10	LDF6.50
2/FCS/050	50	10	LDF7.50



Part No.	Cable Size	Fixing Bolt	Feeder Ref.
2/FCD/016	16	10	LDF4.50
2/FCD/021	21	10	HJ4.5-50
2/FCD/028	28	10	LDF5.50
2/FCD/040	40	10	LDF6.50
2/FCD/050	50	10	LDF7.50



## CABLE TIES

Material 6/6 Nylon (Black)  
UV resistant with a temperature range of -40°C to +85°C

Also available are Cable Tie Markers in 'letters' or 'numbers' for identification.

Part No.	Length	Width	Max Bundle Dia
2/CT/001	240	7.8	51
2/CT/002	300	7.8	76
2/CT/003	370	7.8	102
2/CT/004	540	7.8	130
2/CT/005	750	7.8	200
2/CT/011	250	4.8	51



# FEEDER CLAMPS

Galvanized after manufacture to BS ENISO 1461:1999  
Stainless Steel Bolt, clamping up to 21mm thick

Part No.	Description
2/FAC/001	Clamp tapped M8
2/FAC/014	Clamp tapped M10
2/FAC/002S	M8 > M6 Reducer (Stainless Steel)
2/FAC/003	M8 > M10 Increaser



# CABLE SUPPORT SADDLES

Cable Support Saddles provide an economical fixing for supporting studs onto numerous types of legs or posts.

Stainless steel banding and clips act as the fixing whilst a hexagonal recess in the saddle accommodates the bolt or nut.

A tensioning tool incorporating cutters is used to install the banding and clips.

3.08

Part No.	Description	Radius R	Width A	Support Stud Size
2/CSS/010	Medium Saddle	50	64 mm	M10



Part No.	Description	Fig.
2/CSS/SSB	S/S Banding 30m Coil 19mm Wide	a
2/CSS/BC	Banding Clip	b
2/CSS/TT	Tensioning Tool	

a.



b.



## CABLE GUARDS

Cable Guard is a plastic cable protection capping profile to protect cables on poles and walls.

Angled flanges on Cable Guard for wooden poles  
 Flat flanges on Cable Guard for walls for a secure fixing  
 Supplied in perforated 3m lengths  
 Highly shock resistant and easily installed  
 Lightweight and easy to transport

All Cable Guard is supplied with screw fixing holes for easy installation. Cable Guard can also be used to protect other utility supplies on walls i.e gas, oil and water.



3.09

Part No.	Description	Internal Dia	Length	Wt Kg
2/CG/019	Cable Guard	19mm	3m	0.79
2/CG/025	Cable Guard	25mm	3m	0.84
2/CG/038	Cable Guard	38mm	3m	1.14
2/CG/050	Cable Guard	50mm	3m	1.42
2/CG/064	Cable Guard	64mm	3m	1.60
2/CG/080	Cable Guard	80mm	3m	2.00
2/CG/100	Cable Guard	100mm	3m	4.70

## CHANNEL SUPPORT SYSTEM

Galvanized to BS 6949 - 1988

The quick and easy way to build a variety of supports for electrical, mechanical and industrial services.

The basic parts of channels, spring nuts and plate washers will form many an installation.

Channel can be supplied cut to length as required with other sizes available to order.

Part No.	Description
2/USC/1000T/3	41mm x 41mm Slotted Channel 3m
2/USC/06/SN	M6 Spring Nut
2/USC/08/SN	M8 Spring Nut
2/USC/10/SN	M10 Spring Nut
2/USC/06/PW	M6 Plate Washer
2/USC/08/PW	M8 Plate Washer
2/GVF/014	M10 Plate Washer
2/USC/12/PW	M12 Plate Washer



# HOSE CLIPS

Stainless Steel, 7mm hexagonal head screw with screwdriver slot

Other sizes available to order.

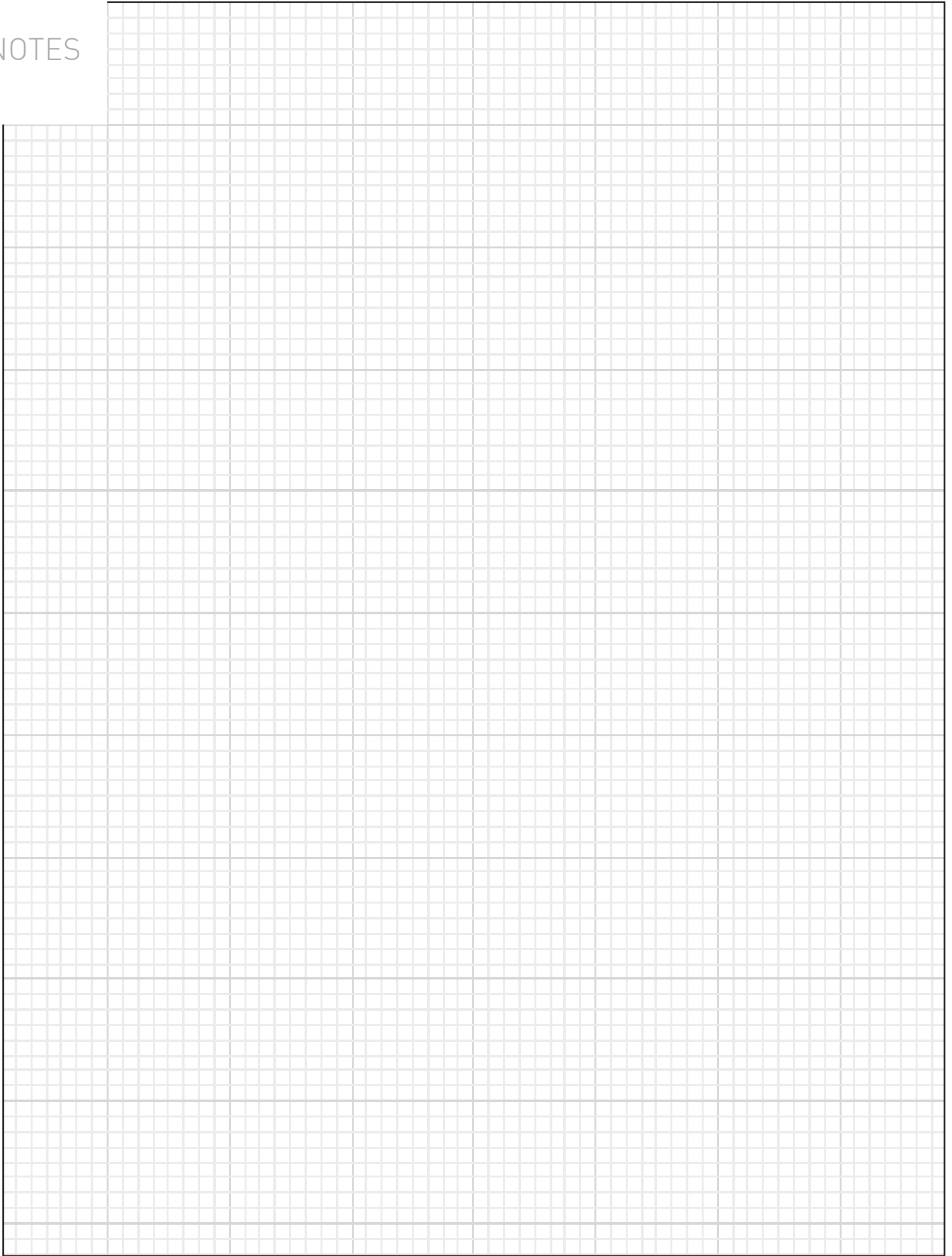
Part No.	Range mm
2/HC/025035	25-35
2/HC/030040	30-40
2/HC/040050	40-50
2/HC/045060	45-60
2/HC/055070	55-70
2/HC/060080	60-80
2/HC/070090	70-90
2/HC/085100	85-100
2/HC/090120	90-120
2/HC/110140	110-140
2/HC/130150	130-150



3.10



NOTES



## CLIMBING & SAFETY

- 4.01 Climbing Ladders
- 4.01 Climbing Rungs
- 4.02 Railok ® Fall Arrest System
- 4.02 Anti-Climbing Equipment
- 4.04 Tube Clamp Handrails
- 4.04 Pipe Clamps
- 4.04 Free Standing Handrail System

# CLIMBING LADDERS

Galvanized to BS 6949 - 1988  
Uncaged ladder over 2.5m must be fitted with fall arrest device  
Access Ladders to BS4211:1994  
Standard lengths 3m - 6m  
Bolt on ladder feet  
Cage hoops square or round

Climbing ladders with or without caging can be manufactured and supplied to suit any application. Ladders to B.S standards with fixings to 'bolt on' climbing rungs are all available and made to the customers requirements.

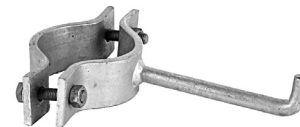
Part No.	Description	Class	Width
4/ALBS/30	Un-caged	A	300
4/ALBS/38	Un-caged	B	380
4/ALBS/30/SH	Caged Square Hoop	A	300
4/ALBS/38/SH	Caged Square Hoop	B	380
4/ALBS/30/RH	Caged Round Hoop	A	300
4/ALBS/38/RH	Caged Round Hoop	B	380



4.01

## CLIMBING RUNGS

Galvanized to BS ENISO 1461:1999  
16mm dia step 160mm long



### BOLT ON CLIMBING RUNGS

Part No.	Tube Dia
4/CRC/060	60.3
4/CRC/076	76.1
4/CRC/088	88.9
4/CRC/114	114.3
4/CRC/139	139.7
4/CRC/168	168.3
4/CRC/193	193.7
4/CRC/219	219.1

### WOODEN POLE CLIMBING RUNG

Part No.	Description
3/CRWP/100	Rung

# RAILOK ® FALL ARREST SYSTEM

Designed to fit vertical ladders or lattice towers the Railok ® tower and ladder safety system provides permanent protection for personnel whilst climbing, or working in a stationary position on a ladder or tower. The standardised components can be easily assembled by riggers having no previous experience of the system. Inherent to the system is the protection provided to the installer as he erects it.

Provides fall arrest protection with full climbing freedom.

Part No.	Description
5/RF/102	Fall Arrest Trolley
5/RF/103	Railok Track 1.5 metres long
5/RF/104	Universal Mounting Bracket
5/RF/TC	Track Connector
5/RF/ES	Stop Bolt Kit
3/RF/LB/100	Stand Off Bracket for 1000 series leg
3/RF/LB/200	Stand Off Bracket for 2000 series leg



# ANTI-CLIMBING EQUIPMENT

Galvanized to BS 6949 - 1988

Just as climbing equipment is important to the installer or rigger. Anti-climbing is important as a deterrent to unauthorised personnel. Various measures can be made from simple barbed wire to a full anti-climbing frame which would fit around the complete base of a structure.

For full information please contact our Sales team.

## 5/ACP/001 a. LADDER ANTI-CLIMB PLATE

2450mm long  
Lockable (Padlock not supplied)  
Does not impede feeders  
Please specify width of ladder  
Width of stringer  
Rung size  
Pitch of rung



## 5/ACD/001 b. LADDER ANTI-CLIMB DOOR

2450mm long  
Hinged  
Lockable  
Please specify width of ladder  
Width of stringer  
Rung size  
Pitch of rung  
Lock excluded



## BOLT ON ANTI-CLIMB SPIKE

Galvanized to ENISO 1461:1999  
 Made to fit all sizes of circular and angle legs  
 Please specify leg size

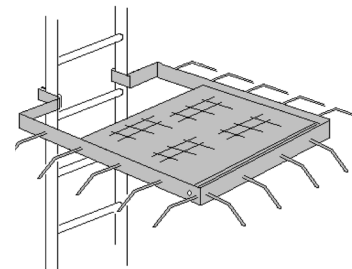
Part No.	Description
4/ACR/048	Assembly for 48.3 Tube c/w bolts
4/ACR/060	Assembly for 60.3 Tube c/w bolts
4/ACR/076	Assembly for 76.1 Tube c/w bolts
4/ACR/088	Assembly for 88.9 Tube c/w bolts
4/ACR/114	Assembly for 114.3 Tube c/w bolts
4/ACR/139	Assembly for 139.7 Tube c/w bolts
4/ACR/168	Assembly for 168.3 Tube c/w bolts
4/ACR/193	Assembly for 193.7 Tube c/w bolts
4/ACR/219	Assembly for 219.1 Tube c/w bolts



## ANTI CLIMB HOOP

Galvanized to BS ENISO 1461:1999  
 Brackets to suit 3 and 4 leg Angle or Tube towers

5/ACH/01



[ Awaiting Image ]

## BARBED WIRE & BRACKETS

Galvanized to BS ENISO 1461:1999  
 Brackets to suit 3 and 4 leg Angle or Tube towers

Part No.	Tower Legs	Leg Series
4/ACB/1003	3	1000
4/ACB/2003	3	2000
4/ACB/3003	3	3000
4/ACB/4003	3	4000
4/ACB/1004	4	1000
4/ACB/2004	4	2000
4/ACB/3004	4	3000
4/ACB/4004	4	4000



2/ACW/200 - Barbed wire 200m reel

Anti climb paint refer to page 8.1

## TUBE CLAMP HANDRAILS

Galvanized to ENISO 1461:1999  
Ideal for building handrails  
Full range available to order

Part No.	For Tube Diameter	Wt/m
2/PCT/06	33.7	2.43
2/PCT/07	42.4	3.13
2/PCT/08	48.3	3.60



## PIPE CLAMPS

Galvanized to BS ENISO 1461:1999  
Designed for handrails, access platforms and guard rails  
Standard sizes available for 33.7, 42.4 and 48.3Ø tube  
Individual fittings and tubes from stock or designed and manufactured for bespoke applications  
Suffix part number with 6/7/8 – see chart



2/PC/15/-

2/PC/61/-

2/PC/25/-

2/PC/26/-

2/PC/64/-

4.04

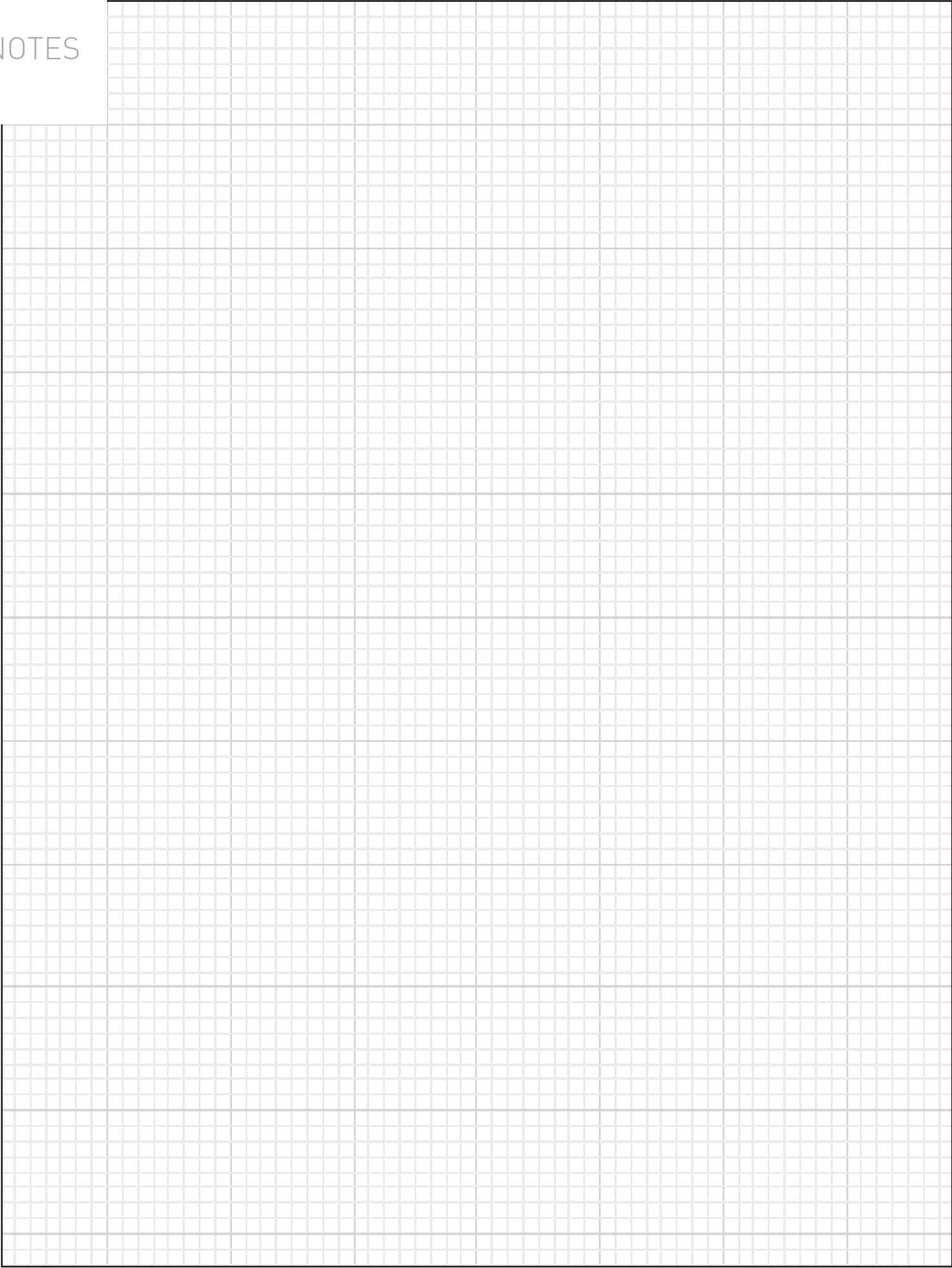
## FREE STANDING HANDRAIL SYSTEM

Galvanized to ENISO 1461:1999c  
System that does not penetrate the roof membrane  
Only available in 48.3Ø

Part No.	Description	Wt Kg
2/FSH/UP/001	Handrail Upright	43.47
2/FSH/CB/001	Counter Balance Weight	45.50
2/PCT/08	Hand & Knee Rail Tube	3.60



NOTES



## EARTHING EQUIPMENT

- 5.01 Earth Conductors
- 5.02 Clamps & Fixings
- 5.03 Lightning Protection



# EARTH CONDUCTORS

## COPPER TAPE

Part No.	Size
2/EAT/006	25 x 3
2/EAT/008	25 x 6

## PVC COVERED COPPER TAPE (Green)

Part No.	Size
2/EAT/206	25 x 3
2/EAT/208	25 x 6

## PVC COVERED COPPER TAPE (Brown)

Part No.	Size
2/EAT/406	25 x 3

## ALUMINIUM TAPE

Part No.	Size
2/EAT/106	25 x 3

## COPPER CIRCULAR

Part No.	Size
2/EAT/050	8mm Dia

## INSPECTION PITS

Part No.	Material
2/EIP/001	Polymer
2/EIP/002	Concrete

## LATTICE EARTH MAT

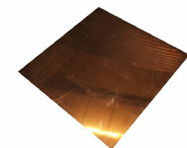
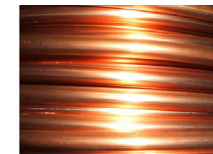
Part No.	Size
2/EAM/005	600mm sq 25 x 3 Tape

## SOLID COPPER EARTH MAT

Part No.	Size
2/EAM/002	600mm sq. 3mm thick

## EARTH ROD & FITTINGS

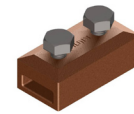
Part No.	Size
2/EAR/016	16mm Coupler
2/EAR/019	16mm Stud
2/EAR/005	Rod 16mm x 1.2m
2/EAR/006	Rod 16mm x 1.5m



# CLAMPS & FIXINGS

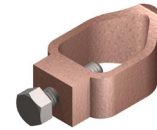
## TEST & JUNCTION CLAMPS

Part No.	Description	Wt Kg
2/ETC/001	25mm Tape	0.398



## ROD-CONDUCTOR CLAMPS

Part No.	Description	Wt Kg
2/ERC/017	16mm Rod	0.107
2/ERC/001	16mm Rod	0.123
	25mm Tape	



## TAPE CLIP

Part No.	Description	Wt Kg
2/ECF/012	25 x 3 Copper	0.027
2/ECF/112	25 x 3 Ali	0.027

## METALLIC DC CLIPS

Part No.	Description	Wt Kg
2/ECF/007	25 x 3	0.074



## NON METALLIC TAPE CLIPS

Part No.	Description	Wt Kg
2/ECF/003	Brown 25mm Tape	0.008
2/ECF/103	Grey 25mm Ali Tape	

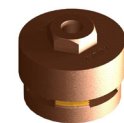
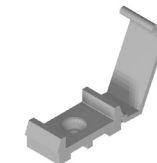
2/ECF/203	PVC Covered Green 25mm Tape	
-----------	--------------------------------	--

2/ECF/403	PVC Covered Brown 25mm Tape	
-----------	--------------------------------	--

Part No.	Description	Wt Kg
2/ETC/003	25 x 3 Tape	0.224
2/ETC/004	25 x 6 Tape	
2/ETC/103	25 x 3 Ali Tape	

Part No.	Description	Wt Kg
2/ETC/005	25mm Tape	0.830

Part No.	Description	Wt Kg
2/ETC/008	25mm Tape	0.452



5.02

# LIGHTNING PROTECTION

## EARTH ROD & FITTINGS

Part No.	Wt Kg	L mm
4/LF/0516	0.855	500
4/LF/1016	1.632	1000
4/LF/1516	2.450	1500
4/LF/2016	3.200	2000



## FINIAL BRACKET (order 2 x fixing bolts per bracket )

Part No.	Wt Kg	Series
3/LFB/116	1.607	1000
3/LFB/216	2.158	2000



## SACRIFICIAL EARTH

Part No.	Wt Kg	Series
3/SEL/100	0.542	1000
3/SEL/200	0.726	2000
3/SEL/300	0.852	3000
3/SEL/400	1.117	4000



## EARTH BONDING STRAP (other sizes to order)

Part No.	Lugs mm	L mm
3/EBS/25/250/10/10	10	250
3/EBS/25/350/10/10	10	350
3/EBS/50/250/10/10	10	250
3/EBS/50/350/10/10	10	350



## GUY HARDWARE

- 6.01 Wire & Fibre Ropes
- 6.01 Parafil
- 6.01 Turnbuckles
- 6.02 Long Link Chain
- 6.02 'D' Shackles
- 6.02 Bow Shackles
- 6.03 Thimbles
- 6.03 Galvanized Commercial Wire Rope Grip

# WIRE & FIBRE ROPES

Parafil type F-Kevlar 29 core  
Fork end terminations are available for all Parafil ropes

Wire ropes are of galvanized strand, right hand lay and supplied in the 3 types of construction shown. The Parafil rope is formed from continuous high strength synthetic fibres encased in a tough durable polymeric sheath.

Part No.	Overall Dia	Construction	Min Breaking Load Tonnes	Wt Kg/100m
2/GSS/005	3mm	7 x 7	0.55	3.40
2/GSS/006	4mm	7 x 7	0.97	6.10
2/GSS/007	5mm	7 x 7	1.51	10.60
2/GSS/012	3mm	7 x 19	0.51	3.34
2/GSS/013	4mm	7 x 19	0.91	5.90
2/GSS/014	5mm	7 x 19	1.42	9.30
2/GSS/015	6mm	7 x 19	2.04	13.40
2/GSS/016	8mm	7 x 19	4.56	23.70
2/GSS/017	10mm	7 x 19	6.53	37.00



## PARAFIL

Parafil is the original parallel laid fibre synthetic rope. The structure ensures that Parafil ropes have high strength coupled with low weight.

A range of easy to fit end fittings are available. For information and prices please contact our sales team.



6.01

## TURNBUCKLES

To U.S Federal Specification FFT-791.B  
Fitted with lock nuts

All turnbuckles are drop-forged high tensile steel, hot dipped galvanized and proof load tested to 1.5 x S.W.L



Part No.	Wt Kg	A	B	C	D	E	F	S.W.L Kg
2/RS/005	0.37	10	22.2	7.94	7.94	302	11	540
2/RS/006	0.79	12	27	9.53	10.30	338	16	1000
2/RS/007	1.37	16	33.3	12.70	12.70	394	18	1590
2/RS/008	1.86	20	38.1	15.90	14.30	432	22	2360

# LONG LINK CHAIN

Galvanized to BS 590 or Stainless Steel Grade 316  
Mild steel, commercial quality (not to be used for lifting applications)

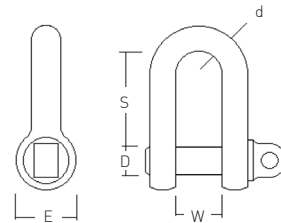


Part No.	Dia A Inch	Dia A mm	Length B mm	Width C mm	Min Breaking Load Kg	Weight Per Metre
2/GCC/05	3/16	5	25	21	1000	0.53
2/GCC/07	1/4	7	38	29	1250	0.63
2/GCC/08	5/16	8	50	33	2500	1.08
2/GCC/10	3/8	10	50	38	4000	1.57
2/GCC/13	1/2	12.7	66	48	6300	2.95
2/GCC/16	5/8	16	100	60	10000	4.45
2/GCC/20	3/4	20	125	75	16000	7.00

# 'D' SHACKLES

Galvanized to BS 3032  
Small D (SSD) and Large D (SLD)  
S.W.L = 1/6 of breaking load

Part No.	Vertical S.W.L Kg	d	D	W	S	E
2/SSD/001	305	6	10	10	22	19
2/SSD/002	610	10	13	16	34	25
2/SSD/003	1016	13	16	22	49	32
2/SSD/004	1778	16	19	25	57	38
2/SSD/005	2540	19	22	32	70	44
2/SLD/001	254	6	10	13	25	19
2/SLD/002	508	10	13	19	38	25
2/SLD/003	762	13	16	28	54	32
2/SLD/004	1524	16	19	32	64	38
2/SLD/005	2032	19	22	38	74	44

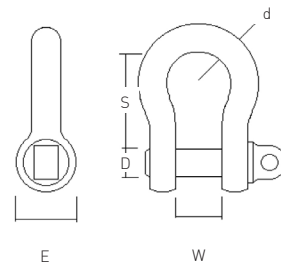


6.02

# BOW SHACKLES

Galvanized to BS 3032  
2 types are stocked Small Bow (SSB) and Large Bow (SLB)  
S.W.L = 1/6 of breaking load

Part No.	Vertical S.W.L Kg	d	D	W	S	B	E
2/SSB/001	203	6	10	13	25	16	19
2/SSB/002	504	10	13	16	38	22	25
2/SSB/003	1016	13	16	22	51	28	32
2/SSB/004	1524	16	19	28	64	38	38
2/SSB/005	2032	19	22	34	76	44	44
2/SLB/001	152	6	10	13	28	19	19
2/SLB/002	457	10	13	16	41	25	25
2/SLB/003	762	13	16	22	54	32	32
2/SLB/004	1270	16	19	28	70	41	38
2/SLB/005	2032	19	22	34	85	51	44



# THIMBLES

All rope thimbles are hot dipped galvanized finish

The larger reeving thimble is used mainly on large diameter ropes and where guy grips are used

## REEVING THIMBLE

Part No.	To Suit Guy Grip
2/OT/08PF	8mm
2/OT/10PF	10mm
2/OT/12PF	12mm



## HEART SHAPED THIMBLE

Part No.	To Suit Rope Dia
2/OT/03H	3mm
2/OT/05H	5mm
2/OT/06H	6mm
2/OT/08H	8mm
2/OT/10H	10mm
2/OT/12H	12mm



# GALVANIZED COMMERCIAL WIRE ROPE GRIP

Part No.	To Suit Rope Dia
2/WRG/101	3mm
2/WRG/102	5mm
2/WRG/103	6mm
2/WRG/104	8mm
2/WRG/105	10mm
2/WRG/106	12mm



## ANCHORS

- 7.01 Delta Anchor
- 7.01 Screw Type Ground Anchor
- 7.01 T Ground Anchor



# DELTA ANCHOR

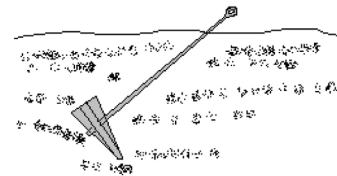
Galvanized to BS ENISO 1461:1999

The Delta Ground Anchor is a triangular shaped alloy casting or forging with a wire cable fitted through 2 holes in the body.

The design of the Delta combines optimum installation characteristics with heavy duty performance capabilities to give a dependable earth anchoring system at reduced installation costs. The slender design shape gives minimum resistance when driven into the ground and then when an upward force is applied to the attached cable the anchor turns perpendicular to the cable for maximum holding power.

A hole in one corner permits fitting of a secondary bond which can be used to recover the anchor for re-use where ground conditions permit.

Holding capacities are the average values obtained in a series of tests. Experience has shown that the nature of soil and depth of anchor govern the 'pull out' loads and therefore we avoid giving values for Delta Anchors.



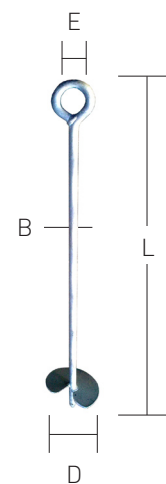
Part No.	Area of Anchor	Wt inc. cable Kg	Cable length	Recom'd Depth	Best Soil	Average Soil	Loose Sand
4/DA/002	91 sq cm	0.5	1.33m	1m	1454kg	658kg	254kg

Part No.	Description
3/DR/101	Driving Rod

# SCREW TYPE GROUND ANCHOR

Galvanized to BS ENISO 1461:1999

Part No.	D	L	E	B	Wt Kg
3/SGA/001	150	760	50	20	3
3/SGA/002	203	1220	56	25	7
3/SGA/003	254	1524	70	35	12
3/SGA/004	305	1676	75	40	20



7.01

# T GROUND ANCHOR

Finish 1 coat red oxide primer

Part No.	L	Hole Dia	Hole Pitch	Wt Kg
3/TGA/001	600	18	50	3
3/TGA/002	1000	22	50	7



## TOOLS & HARDWARE

- 8.01 Paints & Tapes
- 8.01 Tube Caps
- 8.02 Thread Caps
- 8.02 Tools & Consumables
- 8.03 Cable Drum Rollers
- 8.03 Pipe Flashing
- 8.03 Screws

## PAINTS & TAPES

Black tape which wrapped around cables will gradually amalgamate into itself producing a strong waterproof joint.

### PAINT

Part No.	Description
2/GPB/1000	Zinc rich cold galvanizing brush paint 1Kg tin
2/GPB/2500	Zinc rich cold galvanizing brush paint 2.5Kg tin
2/GSP/400	Zinc rich cold galvanizing spray paint 400 ml
2/ACP/2500	Anti-climb paint



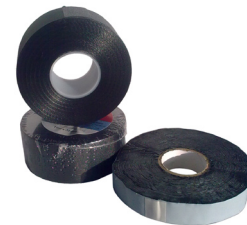
### TAPE

Part No.	Description
2/DENSO/050	Denso Tape - Petroleum based neutral compound on fabric tape 50mm x 10 metres
2/ET/19/33	Black Electrical Tape 19mm x 33 metres



### SELF AMALGAMATING TAPE

Part No.	Description
2/SAT/040	Based on Polyisobutylene 38mm x 10 metres
2/SAT/20/10	Based on Polyisobutylene 20mm x 10 metres



## TUBE CAPS

Material 9238 standard UV resistant vinyl with a length of 38mm  
Other sizes are available to order for square hollow section

Tube Caps are for the protection of tube ends where trimming has left the cut unprotected, to stop rain water filling the base sealed tubes or even to finish off the quality installation.

Part No.	Tube Dia
2/VTC/042	42.0
2/VTC/048	48.3
2/VTC/060	60.3
2/VTC/076	76.1
2/VTC/089	88.9
2/VTC/114	114.3



# THREAD CAPS

Material 9238 standard UV resistant vinyl

Thread protection caps to cover cut bolt or threaded rod ends and give protection to personnel.

Part No.	Thread Size	Thread Cover
2/VTP/008	8mm	25mm
2/VTP/010	10mm	25mm
2/VTP/012	12mm	20mm
2/VTP/016	16mm	20mm



# TOOLS & CONSUMERABLES

Part No.	Description
2/CPB/050	2" Contract Paint Brush
2/CPB/075	3" Contract Paint Brush
2/CPB/100	4" Contract Paint Brush
2/MDB/012	12mm Masonry Bit
2/MDB/014	14mm Masonry Bit
2/MDB/016	16mm Masonry Bit
2/MDB/018	18mm Masonry Bit
2/MDB/020	20mm Masonry Bit
2/MDB/025	25mm Masonry Bit
2/SGC/100	Clear Safety Goggles



Bolt	Spanner	Combination	Ring Podger	O/E Podger
M6	10mm	2/CPS/010	-	-
M8	13mm	2/CPS/013	-	-
M10	17mm	2/CPS/017	2/PSP/17/R	2/PSP/17/O
M12	19mm	2/CPS/019	2/PSP/19/R	2/PSP/19/O
M16	24mm	2/CPS/024	2/PSP/24/R	2/PSP/24/O
M20	30mm	2/CPS/030	2/PSP/30/R	2/PSP/30/O
M10/12	17/19mm	2/PRC/1719	Ratchet Podger	



## CABLE DRUM ROLLERS

Galvanized to ENISO 1461:1999

Galvanized frames with 2 position setting for various drum sizes

Drum rollers ease the handling of cable drums while running feeders on site. Compact and easily stowed make them a must for all installation teams.

Lockable rollers to ease drum positioning and anchor points for added stability.



Part No.	Description
4/CDR/1000	Set of 2 frames

## PIPE FLASHING

Sealing tightly with silicone sealant and any type fastener, the infinitely flexible base is compatible with virtually any roofing material - metal, plastic, asphalt, tile, rubber membrane and more.

Part No.	Pipe O/D mm
2/PF/001	6-50
2/PF/002	32-76
2/PF/003	6-102
2/PF/004	76-114
2/PF/005	102-178
2/PF/006	127-228
2/PF/007	152-280
2/PF/008	178-330
2/PF/009	254-467
2/PF/010	330-660



## SCREWS

Part No.	Description
2/PHS/05050	Pozihead screw M5 x 50
2/SCP/05	Screw Plug M5

