

## Compression force recorder D2

pre-assembled incl. TEDS module

**ATORN®**

### Application

Electric force sensors in the D2 model series are suitable for static and dynamic compressive force measurements in harsh environments. The ball-shaped pressure piece ensures correct force input and thus achieves excellent measurement results.

### Version

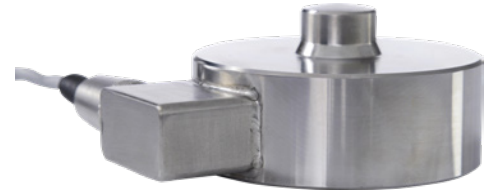
- Robust design made of stainless steel, hermetically welded
- Incl. TEDS module (electronically stored data sheet)
- Pre-assembled with 3-m cables and connector configuration according to ATORN display unit ZD3
- High degree of accuracy
- Incl. factory calibration certificate

### Advantage

- Force sensor is automatically detected by the ATORN display unit ZD3
- All relevant data is loaded from the TEDS module into the ATORN display unit ZD3, thus no additional settings are required on the display unit
- If replacement is required, the measuring instrument does not need to be sent in

### Delivery

Force sensor with 3-m connection cable and measuring instrument plug, factory calibration certificate



<b>Art. no.</b>	<b>44181 590</b>
<b>Model</b>	D2
<b>Design</b>	TEDS module integrated
<b>Min./max. force of measuring range</b>	0-50 kN
<b>Outer diameter</b>	82 mm
<b>Total height</b>	44 mm
<b>Height of force transducers until piston</b>	30 mm
<b>Piston diameter</b>	21.5 mm
<b>Protruding piston height</b>	14 mm
<b>Fastening thread</b>	M8
<b>Sensitivity of force sensor</b>	2 mV/V
<b>Max. supply voltage</b>	15 V
<b>Min./max. nominal range of the supply voltage</b>	5-10 V
<b>Rated output</b>	2 mV
<b>Zero signal when mounted</b>	0.02 mV
<b>Relative characteristic value deviation</b>	$\leq \pm 0.1 \%$
<b>Relative linearity deviation</b>	$\leq \pm 0.05 \%$
<b>Relative span in unchanged installation position</b>	$\leq \pm 0.08 \%$
<b>Composed error</b>	$\leq \pm 0.08 \%$
<b>Material</b>	Steel, stainless
<b>IP protection class</b>	IP 68
<b>Cable length</b>	3 m

### EAN-Code

4050293715408