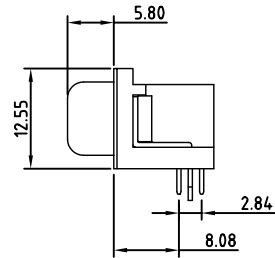
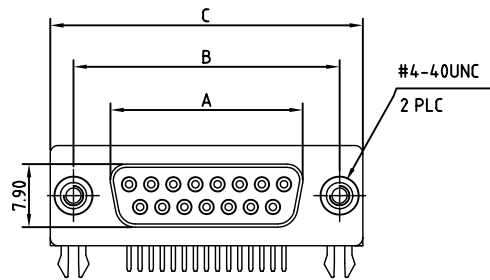


RevNo		Date	Signature	Checked
-------	--	------	-----------	---------



103XXFXXX - - - - LF	
D-Sub 90D Typ	Vacant:Default PBT P2:PA6T P3:LCP P4:PA9T
09	Vacant:No Screw S:4.8 L:5.8
15 Female	Vacant:No Accessories
25 8.Nickel	V0.Coalescent Nut H=5.8
37 9.Tin	V. Lock Screw.
11.Gold	VI. With Screw.
1.White	VII.Additional Screw.
3 Black	Vacant:Default 1u'
4.Yellow	3. 3u'
6 Green	5. 5u'
9 Blue	6. 10u'
10. PC99 1 Full Gold	7. 15u'
2 Half Gold	8. 30u'

Note

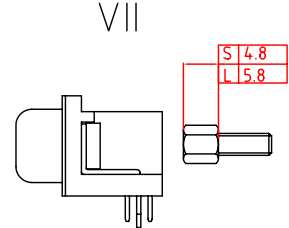
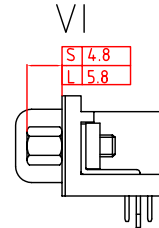
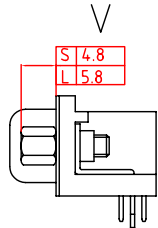
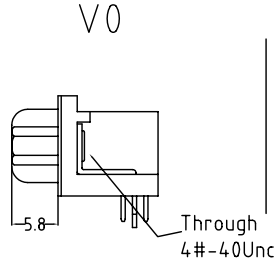
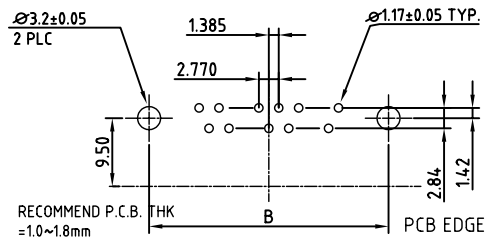
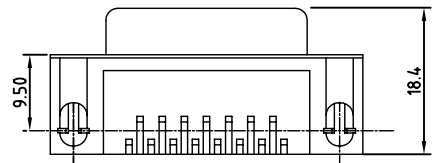
No.	A	B	C
09	16.33	24.99	30.81
15	24.66	33.32	39.14
25	38.38	47.04	53.04
37	54.83	63.50	69.32

ELECTRICAL CHARACTERISTICS

Contact Current Rating:3Amperes.  
 Dielectric Withstanding Voltage:AC 500V at sea level.  
 Insulation Resistance:1000Megohms Min.  
 Contact Resistance:30Milliohms Max.  
 Operation Temperature : -55°C to +105°C.

Material

Contact :Copper Alloy.  
 Insulator:PBT. (Select PA6T /LCP /PA9T)  
 Shell: SPCC.  
 Z-Piece: Copper Alloy.  
 Screw: Copper Alloy.  
 Rivet: Copper Alloy. or Zinc.



DRAW.BY	LinHaiFong	DATE	2005-10-10	UNIT	MM	TOLERANCE UNSPECIFIED	.X ±0.30 .XX ±0.25 .XXX ±0.150	Ang. ±2°
APPVL.BY		VERSION	A	SCALE		DWG.No.	F:/XX/ / +	

Chin Shong  
Enterprise CO., LTD.

ITEM	D-SUB Female 90D-DIP /7.2
PART No.	
CUSTOMER	