

## Euromas Aluminium / Euromas F05

Enclosure, aluminium



A 122

Order no.: 01122000

\* = Available on request.

### Characteristics

Colour of enclosure group

Grey, similar to RAL 7001

Protection class

IP 66

Enclosure Material

G Al Si 12, PU foamed seal

For details see Technical Information

### Scope of delivery

Lid and base, lid screws made of V2A, earthing screw

### Note

On the A 198, because of the wall-mounting drill holes inside the sealed lip, expert sealing of the wall-mounting is necessary to achieve protection class IP 66.

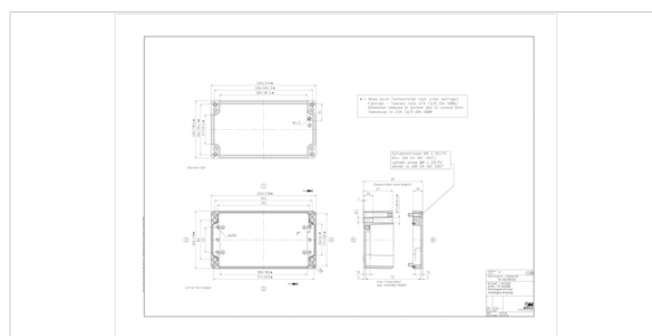
G = design with transparent lid (PC)

### Dimensions

Dimensions

220 x 120 x 81 mm

### Product drawing



### Important!

To compensate for pressure when temperatures change and cause moisture in the enclosure, we recommend that you use a pressure compensation element.

» Additional information

20.02.2020

## Technical documentation / Downloads

---

### Technical drawings

3D product data in STEP format: Registration necessary  
Product drawing in PDF format: 01122000 A-122.pdf (76.3 KB)  
Product drawing in DXF format: 01122000 A-122.dxf (505.3 KB)  
Drawing for mechanical processing: 01122000 A-122-G.dxf (306.6 KB)

Milling contours are shown here as a DXF file. (Sub D, USB, HDMI, cable glands, ...)

### Works Test Certificates

682 WPZ-Euomas-Aluminium DE.pdf (163.7 KB)  
682 WPZ-Euomas-Aluminium EN.pdf (143.7 KB)

### Product information

Euomas Aluminium F05 GB.pdf (1.8 MB)

## Matching accessories

---



### Capstan-headed screws, sealable

21007955 KP

For A 119, A 122, A 124-125, A 130, A 135-190, A 196-197



### Allen cheese-head screw for lid

21007950 IS

For A 119, A 122, A 124-125, A 130, A 135, A 140-168, A 170-190



### DIN rails DIN EN 60715 TH 15, galvanised steel

21003310 TS 15

For A 122-123



### Mounting panels, laminated paper (P 305-329) or galvanised sheet steel (P 330-355)

21001500 M

For A 122-123, P 331



### Earthing bars with fitted terminal clamps

21004700 E

For A 122-123, P 331



### Wall brackets, screw-on at rear

21004300 WL

For A 119-198, P 330-355



DIN rails DIN EN 60715 G 32, galvanised steel

21003300 TS 32

For A 122-123, P 331



DIN rails DIN EN 60715 TH 35, galvanised steel

21003320 TS 35

For A 122-123, P 331



Set of hinges

21007800 SCHD