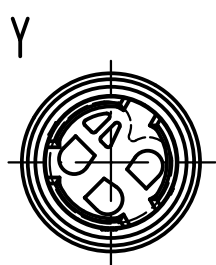
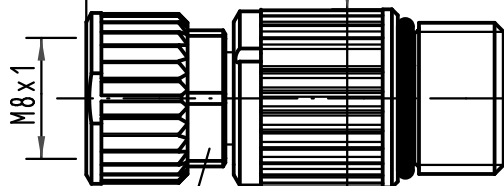


1 2 3 4 5 6

Gesamtlänge im verschraubten Zustand ca. 42,5mm/
complete length when assembled app. 42,5mm



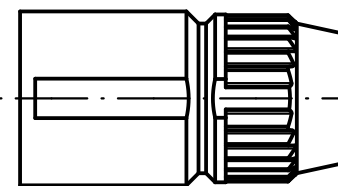
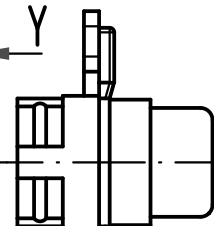
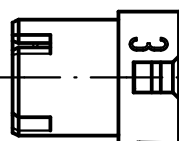
X



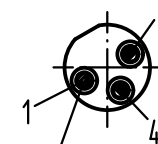
SW9/
width across
flats 9

$\phi 11,8$

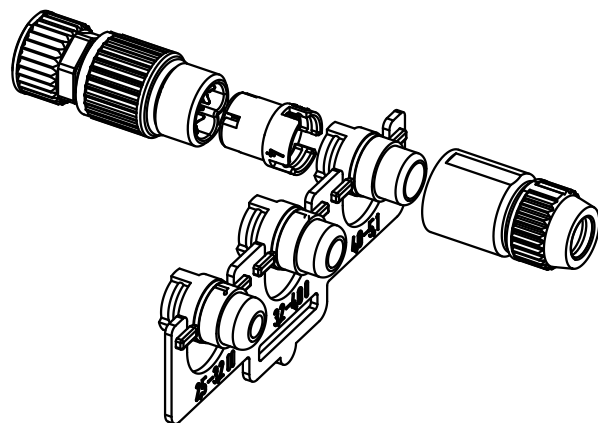
Y



X



Steckgesicht n.
Contact face acc.
IEC 61076-2-104



Leiterquerschnitt conductor cross section	0,14 - 0,34 AWG26-AWG22
Kabeldurchmesser cable outside diameter	2,5-5,1mm

ALL Dimensions in mm Original Size DIN A 4	Techn. Character.			Nicht tolerierte Maßel Free size tolerances
		Dat.	Name	
	Detail.	01.08.03	DY	Maßstab/Scale 2:1
	Insp.		Well	
	Stand.			
ECO2026	13.07.10	DY	HARTING Electronics GmbH & Co. KG	
Mod.	Dat.	Name	D-32339 ESPELKAMP	
			TB 21 02 151 2305	
			Sub.	
				Blatt/ page