

## UNICASE

[Home Page](#)[E-Mail Us](#)[Catalogue PDF](#)[Get a Catalogue](#)[Get a Drawing](#)[Get a Price](#)[Get a Quote](#)[Customising](#)[IP Ratings](#)[Colour Chart](#)[Ordering Info](#)[Order Form](#)[Distributors](#)[☎ 01489 583858](#)[☎ 01489 583836](#)**FEATURES:**

- Aluminium instrument enclosures
- Robust and versatile design
- Six standard models and four slimline models
- Simple and fast assembly
- Removable internal chassis
- PBC guide rails in the assembly extrusions
- Aluminium front and rear panels included
- Front panels recessed to protect controls
- Four push-in non-slip rubber feet included

**MATERIAL:**

- Aluminium

**PROTECTION CLASS:**

- IP 40 (Not rated)

**FINISH:**

- Powder epoxy polyester paint

**STANDARD COLOURS:**

- Light grey, RAL 7035

**SUPPLY:**

1. Top cover
2. Base cover
3. Assembly profile (x2)
4. Anodised aluminium front panel (x2)
5. Rubber foot (x4)
6. M3 x 8 mm (x16)

**APPLICATIONS:**

- Simple universal enclosures for measuring and control technology, feedback control, peripheral devices and interfaces, switchboxes, modems, medical field and laboratory technology.

[🔍 Assembly Instructions](#)[🖨️ Printable Page](#)

Standard Models



Slimline Models



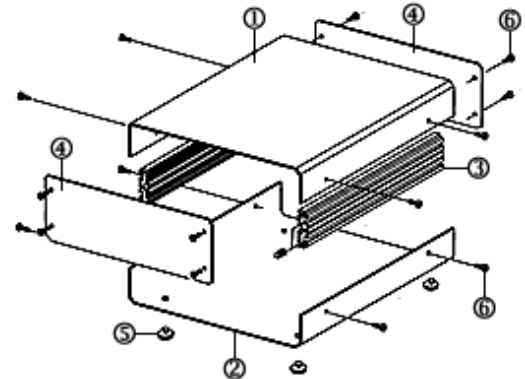
Internal Chassis

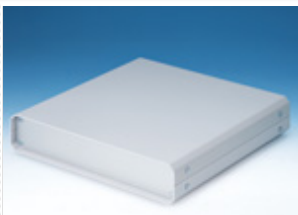


Fast Assembly



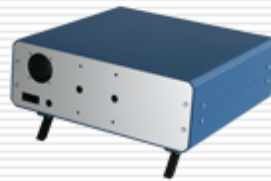
Recessed Front Panel





| Part No. Slimline Models |   | Part No. Standard Models | Description | H     | W   | D   | Drawings            |
|--------------------------|---|--------------------------|-------------|-------|-----|-----|---------------------|
| <a href="#">M5511110</a> | £ |                          | UNICASE SL1 | 50    | 130 | 180 | <a href="#">PDF</a> |
| <a href="#">M5512110</a> | £ |                          | UNICASE SL2 | 50    | 185 | 250 | <a href="#">PDF</a> |
| <a href="#">M5513110</a> | £ |                          | UNICASE SL3 | 50    | 250 | 250 | <a href="#">PDF</a> |
| <a href="#">M5514110</a> | £ |                          | UNICASE SL4 | 50    | 250 | 300 | <a href="#">PDF</a> |
|                          |   | <a href="#">M5501110</a> | £ UNICASE 1 | 65    | 185 | 180 | <a href="#">PDF</a> |
|                          |   | <a href="#">M5502110</a> | £ UNICASE 2 | 90    | 260 | 250 | <a href="#">PDF</a> |
|                          |   | <a href="#">M5503110</a> | £ UNICASE 3 | 110   | 350 | 250 | <a href="#">PDF</a> |
|                          |   | <a href="#">M5504110</a> | £ UNICASE 4 | 134.5 | 261 | 300 | <a href="#">PDF</a> |
|                          |   | <a href="#">M5505110</a> | £ UNICASE 5 | 134.5 | 367 | 300 | <a href="#">PDF</a> |
|                          |   | <a href="#">M5506110</a> | £ UNICASE 6 | 134.5 | 474 | 300 | <a href="#">PDF</a> |

DWG



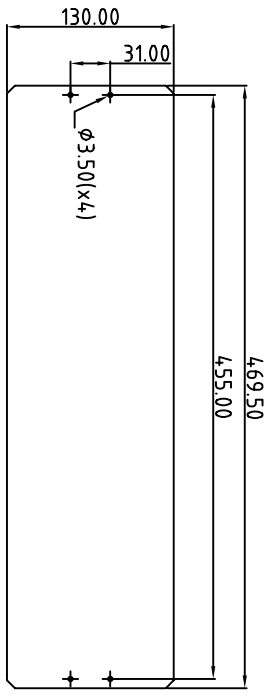
Customising

Tel: 01489 583858 Last Updated: 31-Oct-2007 ©METcase™ UK. All rights reserved.

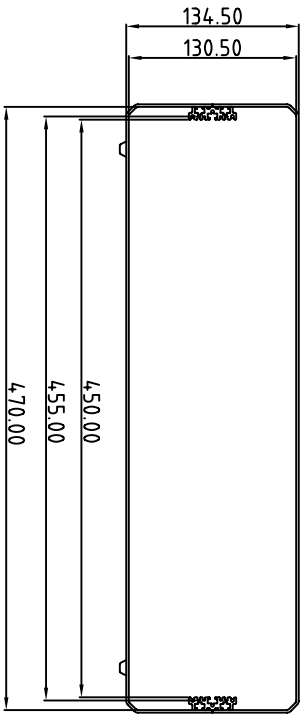
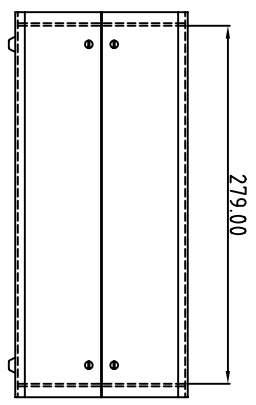
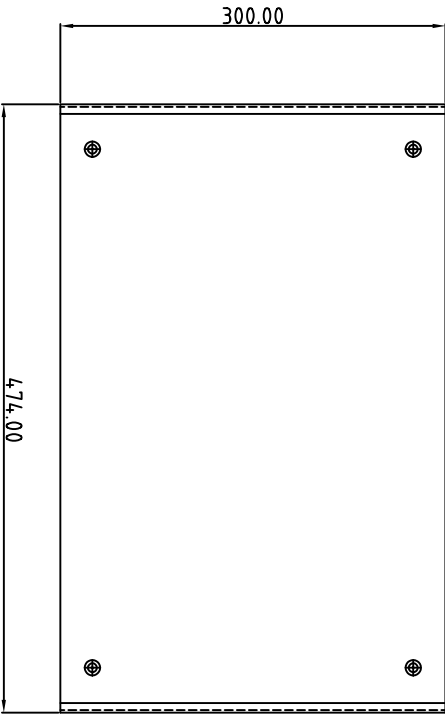
FIRST ANGLE PROJECTION

Modifications  
1

Note: Subject to technical modifications without prior notice.  
Typographical and other errors do not justify any claim for damages.  
All dimensions should be verified using the actual case.



Anodised Front Panel  
2mm Thick



ALL DIMENSIONS IN MILLIMETRES

Tolerances unless otherwise stated:

General tolerances  $\pm 0.20$

Resultant tolerances between hole centers  $\pm 0.15$

Tolerances on hole diameters  $\pm 0.05$

Angles  $\pm 0.5^\circ$

Surface finish  $\sqrt{}$

Scale: 1:4

Drawn By: Ian Cox

Checked By:

Drawing Number:

Part Name:

Part Number:

Date drawn: August '05

Material Spec:

DO NOT SCALE



METCASE ENCLOSURES  
Unit 3, Mitchell Close  
Segensworth East, Fareham,  
Hampshire, PO15 5SE, UK.

www.metcase.com

Part Name: UNICASE 6  
Part Number: M5506110

© DKW ENCLOSURES LTD DATE AS SHOWN. THIS DRAWING CONTAINS PROPRIETARY INFORMATION OF DKW ENCLOSURES LTD AND IS TENDERED SUBJECT TO THE FOLLOWING CONDITIONS: THE INFORMATION BE RETAINED IN CONFIDENCE, NOT BE REPRODUCED OR COPIED, AND NOT BE USED OR INCORPORATED IN ANY PRODUCT, UNLESS PERMISSION IS OBTAINED IN WRITING FROM DKW ENCLOSURES LTD.

Sheet 1 of 1

A3