

workplace mat based on SBR, ESD design

with textured structure and with cushioning half nubs on the underside

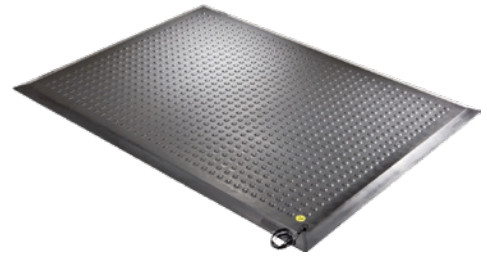
ergolastec soft footing.

Application:

Ergolastec ESD mat that meets the special requirements for electronics and micro-electronics workstations.

Advantage:

- relieves the back during long periods of standing
- tested and recommended by the Federal Association of German Back Schools (Bundesverband deutscher Rückenschulen e.V.) and the forum: Healthy Back – Better Life (Gesunder Rücken – besser leben e.V.)



Art. no.	50225 905
Surface structure	Burling / closed
Material	Synthetic rubber
Length	1350 mm
Width	1000 mm
Material thickness	20 mm
Mat design	Individual mat
Resistance against	Alkali, Washing water
Min. temperature resistance	-35 °C
Max. temperature resistance	95 °C
Suitable for wet areas	Yes
Antistatic	Yes
Anti-fatigue	Yes
Non-slip	Yes
Compliant with REACH	Yes
Colour	Black
ESD-capable	Yes