

# Customer Information Sheet

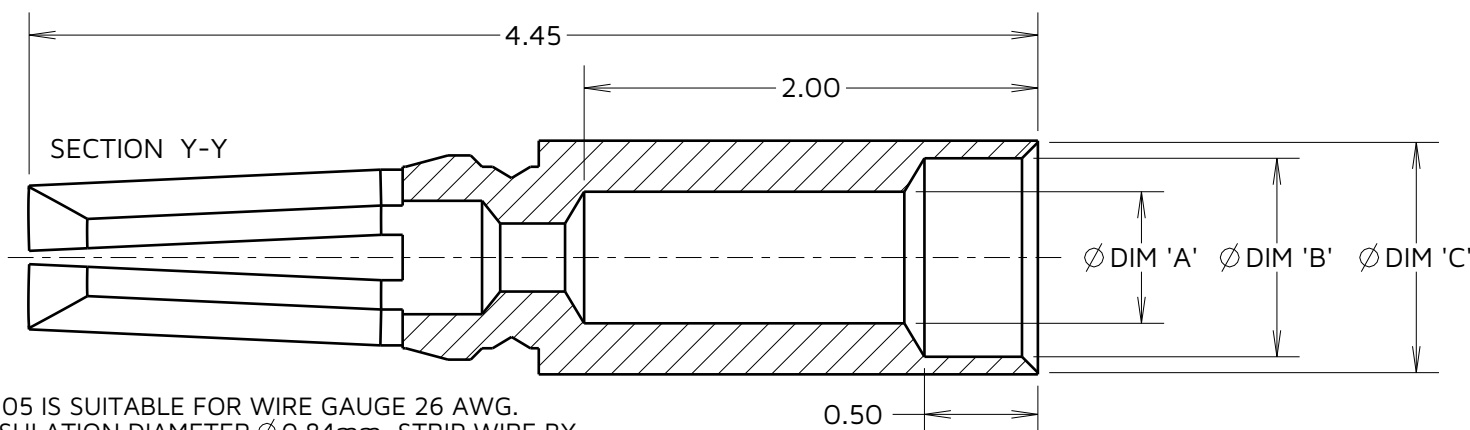
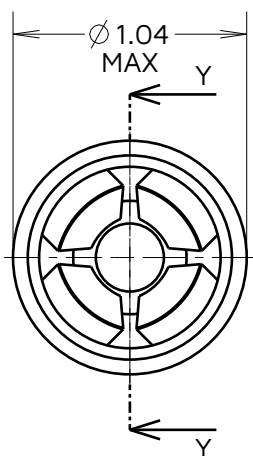
IF IN DOUBT - ASK



NOT TO SCALE

THIRD ANGLE PROJECTION

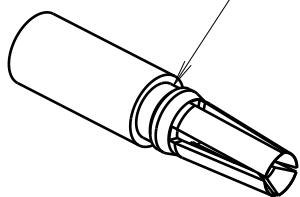
ALL DIMENSIONS IN mm



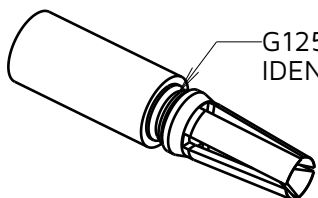
**NOTES:**

- G125-0010005 IS SUITABLE FOR WIRE GAUGE 26 AWG. MAXIMUM INSULATION DIAMETER  $\varnothing$ 0.84mm, STRIP WIRE BY 1.50-1.75mm FOR CRIMPING.
- G125-0020005 IS SUITABLE FOR WIRE GAUGE 28-32 AWG. MAXIMUM INSULATION DIAMETER  $\varnothing$ 0.74mm, STRIP WIRE BY 1.50-1.75mm FOR CRIMPING.
- RECOMMENDED CRIMP TOOL = Z125-900 & POSITIONER = Z125-901 CONTACT INSERTION / WITHDRAWAL KIT = Z125-902.
- FOR INSTRUCTIONS ON HAND CRIMP TOOL Z125-900, SEE INSTRUCTION SHEET IS-37.
- FOR RECOMMENDED WIRE TYPES SEE COMPONENT SPECIFICATION C049XX WHERE XX IS LATEST ISSUE.
- PACKING: 100 PER BOX.
- HANDLING GUIDELINES:  
WHEN HANDLING THIS PRODUCT WEAR NITRILE/LATEX POWDER FREE GLOVES OR FINGER COTS. TO PREVENT THE CONTAMINATION OF CONTACTS FROM HANDS.

G125-0010005  
NO IDENT



G125-0020005  
IDENT



PART No.	MATERIAL	FINISH	DIM 'A'	DIM 'B'	DIM 'C'	IDENT GROOVE
G125-0010005	BERYLLIUM COPPER	0.20-0.30 $\mu$ m GOLD OVER	$\varnothing$ 0.60	$\varnothing$ 0.88	$\varnothing$ 0.95	NO
G125-0020005		1.5-2.5 $\mu$ m NICKEL	$\varnothing$ 0.48 $\varnothing$ 0.44	$\varnothing$ 0.80 $\varnothing$ 0.77	$\varnothing$ 0.87 $\varnothing$ 0.84	YES

RTP	14	14.09.23	33007
NAME	ISS.	DATE	CN/CO
APPROVED: R.PORTLOCK			
CHECKED: F.CHRISPINE			
DRAWN: S.FLOWER			
ASSEMBLY DRG:			
PART WEIGHT:		MAT'L USAGE:	

**HARWIN**

www.harwin.com

**TOLERANCES**

X. =  $\pm$ 1mm  
 X.X =  $\pm$ 0.50mm  
 X.XX =  $\pm$ 0.20mm  
 X.XXX =  $\pm$ 0.01mm  
 ANGLES =  $\pm$ 5°  
 UNLESS STATED

THIS DRAWING AND ANY INFORMATION OR DESCRIPTIVE MATTER SET OUT HEREON ARE CONFIDENTIAL AND COPYRIGHT PROPERTY OF THE HARWIN GROUP AND MUST NOT BE DISCLOSED, LOANED, COPIED OR USED FOR MANUFACTURING, TENDERING OR FOR ANY OTHER PURPOSE WITHOUT THEIR WRITTEN PERMISSION.

**MATERIAL:**

SEE TABLE

FINISH: SEE TABLE

S/AREA: mm<sup>2</sup>

**TITLE:**

**G125 SERIES FEMALE CRIMP SIGNAL CONTACTS**

DRAWING NUMBER:

G125-0010005, G125-0020005

SHT  
3  
OF  
3