

## DCGW indexable insert CBN positive

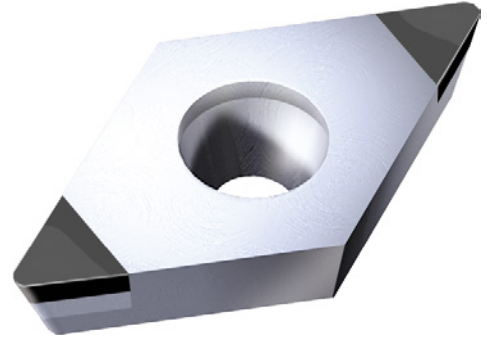
**ATORN®**

### Application

For longitudinal and copy turning in casting work and special alloys.

### Version

- Lasered CBN indexable insert



|  |                  |
|--|------------------|
| <b>Art. no.</b>                                | <b>17872 524</b> |
| <b>Shape of indexable insert ISO</b>           | D                |
| <b>Clearance angle of indexable insert ISO</b> | C                |
| <b>Tolerance class of indexable insert ISO</b> | G                |
| <b>Indexable insert type ISO</b>               | W                |
| <b>Size of indexable insert ISO</b>            | 04               |
| <b>Thickness of indexable insert ISO</b>       | T0               |
| <b>Corner radius of indexable insert ISO</b>   | 02               |
| <b>ISO name</b>                                | DCGW 04T002      |
| <b>Cutting material</b>                        | CBN              |
| <b>Type of cutting material</b>                | ABC15B/A         |
| <b>ISO-Code Rotating</b>                       | DCGW 04T002      |
| <b>Design of the chamfer</b>                   | A (sharp)        |

### EAN-Code

4050293568073