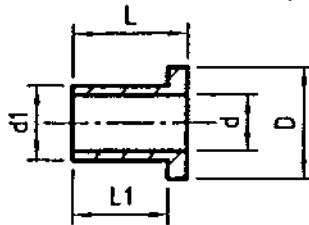


Isolierbuchsen

119...2/1



d=3.0 bis 3.1

Werkstoff: PA-GV (Polyamid) hitzestab. schwarz

Temperaturbeständig bis ca. 140°C

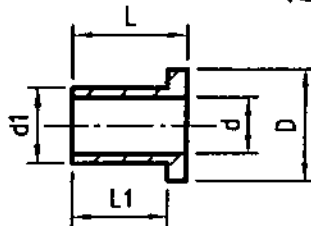
Bestell-Nr.	Preis-Gr.	d	D	d1	L1	L
119.08. 12	011	3.0	5.5	3.5	2.5	3.5
49	029	3.0	5.9	3.5	0.6	1.8
59	029	3.0	5.9	3.5	0.6	2.6
60	029	3.0	5.9	3.5	1.2	2.5
69	011	3.0	6.5	3.6	2.5	4.5
70	011	3.0	6.5	3.6	2.5	3.5
84	037	3.0	8.0	3.6	1.5	4.5
36	012	3.1	6.0	3.5	1.3	2.3
67	012	3.1	6.0	3.5	1.1	2.1
93	014	3.1	6.0	3.5	1.3	3.7
111	020	3.1	6.0	3.5	2.2	3.2
66	011	3.1	6.0	3.5	3.0	5.0
90	011	3.1	6.0	3.5	3.5	6.0
87	011	3.1	6.0	3.7	3.0	5.0
62	012	3.1	6.0	3.8	3.3	4.4
63	012	3.1	6.0	3.8	5.2	6.4
104	044	3.1	6.2	4.0	2.0	3.0
105	044	3.1	6.2	4.0	4.0	5.0
01	011	3.1	7.5	3.5	2.5	3.5
10	011	3.1	7.5	3.5	2.5	6.5
19	011	3.1	7.5	3.5	1.3	2.3
85	011	3.1	7.5	3.5	2.5	7.5
94	030	3.1	7.5	3.5	1.3	4.3
14	012	3.1	7.5	3.9	4.5	6.0
38	012	3.1	7.5	3.9	3.5	4.5
51	048	3.1	7.5	3.9	4.0	6.0
53	026	3.1	7.5	3.9	2.0	4.0
95	012	3.1	7.5	3.9	3.5	5.5
77	014	3.1	7.6	6.0	1.0	2.0
43	013	3.1	10.0	3.4	8.0	9.0
71	012	3.1	10.0	4.1	1.6	3.0
46	017	3.1	10.0	4.2	8.0	10.0
96	020	3.1	10.0	4.2	8.0	12.0
52	017	3.1	10.0	6.4	1.3	2.8

64B 560

Isolierbuchsen

119...3/

d=3.2 bis 5.2



Werkstoff: PA-GV (Polyamid) hitzestab. schwarz

Bestell-Nr.	Preis-Gr.	d	D	d1	L1	L
119.08. 09	013	3.5	7.0	4.9	7.4	8.2
06	013	3.5	7.0	5.1	2.2	3.0
58	013	3.5	9.0	6.3	2.0	4.0
50	013	4.0	9.3	6.3	1.3	2.5
42	013	4.0	10.0	4.4	8.0	9.0
55	027	4.1	8.0	5.0	3.0	7.0
83	024	4.1	8.0	5.6	6.5	10.5
47	018	4.1	10.0	5.2	10.0	12.0
97	021	4.1	10.0	5.2	10.0	14.0
110	034	4.1	10.0	5.8	20.0	22.0
76	014	4.1	10.0	7.0	1.0	2.0
88	016	4.2	11.9	7.8	6.3	8.0
31	011	4.5	8.0	6.0	3.2	4.0
04	023	4.5	15.7	9.7	8.0	13.0
61	023	4.5	15.7	9.7	6.5	11.5
92	034	4.5	15.7	9.7	1.7	5.7
112	017	5.0	11.0	6.4	3.8	4.4
114	036	5.0	14.0	7.5	2.3	3.0
79	028	5.1	10.1	6.3	2.24	3.05
08	020	5.1	12.0	5.5	4.0	5.0
28	020	5.1	12.0	5.5	2.0	3.0
21	021	5.1	12.0	6.4	15.0	16.0
44	021	5.1	12.0	6.4	15.0	17.0
57	027	5.2	10.0	6.2	1.5	4.0
75	028	5.2	10.0	6.2	1.5	2.5
64	020	5.2	12.0	5.5	3.5	5.0
26	021	5.2	12.0	6.2	10.0	11.0
98	027	5.2	12.0	6.4	15.0	20.0
113	021	5.2	12.0	6.9	8.0	9.0
16	021	5.2	12.0	6.9	8.0	11.0
73	028	5.2	12.0	7.0	0.8	2.8

61B 562

61B 564