



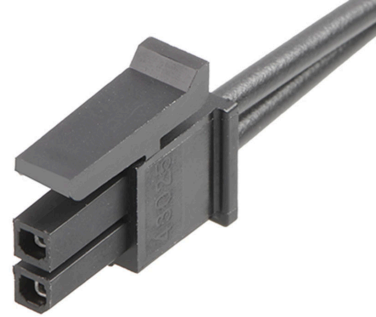
Part Number : [2147551021](#)

Product Description : Micro-Fit 3.0 Female-to-Micro-Fit 3.0 Female Off-the-Shelf (OTS) Cable Assembly, Dual Row, 150.00mm Length, Tin (Sn) Plating, 2 Circuits, Black

Series Number : 214755

Status : Active

Product Category : Power and Signal Cable Assemblies



Documents & Resources

Drawings

[Drawing 2147551021_sd.pdf](#)

3D Models and Design Files

[3D Model 2147551021_stp.zip](#)

Specifications

[Product Specification 510211000-PS-CHI-000.pdf](#)

[Product Specification 510211000-PS-JAP-000.pdf](#)

[Product Specification 510211000-PS-KOR-000.pdf](#)

[Product Specification 510211000-PS-SPA-000.pdf](#)

[Product Specification 510211001-PS-CHI-000.pdf](#)

[Product Specification 510211001-PS-JAP-000.pdf](#)

[Product Specification 510211001-PS-KOR-000.pdf](#)

[Product Specification 510211001-PS-SPA-000.pdf](#)

[Product Specification 510211006-PS-000.pdf](#)

Product Environment Compliance

Compliance

GADSL/IMDS	Not Relevant
China RoHS	
EU ELV	Not Relevant
Low-Halogen Status	Not Low-Halogen per IEC 61249-2-21
REACH SVHC	Not Contained per D(2023)3788-DC (14 Jun 2023)
EU RoHS	Compliant per EU 2015/863

Multiple Part Product Compliance Statements

- Eu RoHS
- REACH SVHC
- Low-Halogen

Multiple Part Industry Compliance Documents

- IPC 1752A Class C
- IPC 1752A Class D
- Molex Product Compliance Declaration
- IEC-62474
- chemSHERPA (xml)

EU RoHS Certificate of Compliance

Part Details

General

Status	Active
Category	Power and Signal Cable Assemblies
Series	214755
Description	Micro-Fit 3.0 Female-to-Micro-Fit 3.0 Female Off-the-Shelf (OTS) Cable Assembly, Dual Row, 150.00mm Length, Tin (Sn) Plating, 2 Circuits, Black
Application	Power, Wire-to-Board, Wire-to-Wire
Assembly Configuration	Dual Ended Connectors
Connector to Connector	Micro-Fit 3.0 Both Ends
Product Family	Micro-Fit Connector System
Product Name	Micro-Fit 3.0
Type	Discrete Wire Assembly
UPC	193264500086

Electrical

Current - Maximum per Contact	8.5A
Voltage - Maximum	300V AC/DC

Physical

Cable Length	150.00mm
Circuits (Loaded)	2

Circuits (maximum)	2
Color - Resin	Black
Gender	Female-Female
Lock to Mating Part	Yes
Material - Metal	Phosphor Bronze
Material - Plating Mating	Tin
Material - Plating Termination	Tin
Material - Resin	Nylon
Net Weight	4.149/g
Number of Rows	2
Overmolded	No
Packaging Type	Bag
Pitch - Mating Interface	3.00mm
Plating min - Mating	1.016µm
Plating min - Termination	1.016µm
Single Ended	No
Termination Interface Style	Crimp or Compression
Wire/Cable Type	UL 1061
Wire Insulation Diameter	1.85mm max.
Wire Size (AWG)	18

Mates With / Use With

Mates with Part(s)

Description	Part Number
Micro-Fit 3.0 Dual Row Plug Housings	<u>43020</u>
Micro-Fit 3.0 Dual Row Headers	<u>43045</u>
Micro-Fit 3.0 Dual Row Test Plugs	<u>44242</u>